

BRANDON UNIVERSITY FOUNDATION

---

# 2019 Annual Report

· BUILT IN ·  
**BRANDON**



**BRANDON**  
UNIVERSITY

FOUNDATION

## GREETINGS FROM THE BU PRESIDENT



It is with mixed blessings that I write this year's annual report to Brandon University's donors and friends. While the Foundation experienced a very strong year, the impact of the COVID-19 pandemic has not been lost on Brandon University.

In March, Brandon University moved to suspend all in-person courses and instead provide them through alternative means. Our Healthy Living Centre, Library, Lorne Watson Recital Hall and other venues were closed to the public. The majority of our residence students returned home. Following Manitoba Public Health guidance, the majority of BU staff, faculty and managers began working from home whenever possible.

Brandon University is proud of everyone on campus who worked under stressful conditions to achieve our two overlapping priorities: keeping everyone as safe as possible and permitting all of our students the opportunity to finish their courses. Changes to our final grading policy provided some stress release for many students who faced challenges with learning at a distance. However, anxiety among students remains high. Many students found themselves facing financial challenges.

Our Student Emergency Fund provides emergency funding to students. While

this is a robust fund, the need was off the charts. At last count, we have received 165 applications and have approved 128. We have given more than \$65,400 in emergency student assistance. Individually, these are modest grants, going to students who have a GPA of at least 2.0 living away from home who have a financial need. Collectively, the impact is significant. Thankfully, an appeal to alumni to support this fund generated over 70 donations totaling more than \$20,000 to help replenish the piggybank. We are grateful for the strong support of our alumni and supporters in recognizing the need to support our students at this critical time. I also want to thank Katie Gross and Jacquie Esplin for their extraordinary efforts in dispersing these funds.

For the Foundation, 2019 represented a good year. We realized a significant increase from 2018. For 2019 we had total assets of \$73,878,380, a more than 10 per cent increase from 2018. Our total endowed funds ended 2019 with \$51,337,323 — nearly four million dollars higher than in 2018. Of course, part of this increase was due to favourable market conditions at the end of 2019, compared to a rocky end of 2018 in the markets. We should be aware that 2020 has started with market uncertainty as well.

However, it was not just the market that made 2019 so strong. We also saw significant levels of increased investment in BU from our alumni and supporters. Total donations in 2019 were \$1,867,490, an increase of more than \$600,000 from the previous year. Significantly, the increase in endowed donations tripled, to over \$1,250,366. The true benefit in this increase will be seen over generations, as students will see the benefit from these endowments to scholarships, bursaries and other funds. Our total disbursements

for the year were \$2,868,895, a slight increase over last year.

Brandon University received two significant gifts this year. Clive Richard Taylor, an alumnus who earned three degrees from BU, bequeathed a generous gift to the university that will be used to support students as well as research in health care and nursing. The faculties of Health Studies and Science are in discussions to determine the best way to allocate these funds.

Late last year, BU also announced the Al and Bee Wagner Indigenous Transition Fund. Thanks to one of BU's largest donations ever, from Daphne Wagner '79 and David Green, this fund will provide support for Indigenous students transitioning from high school to university and will further support them throughout their studies. BU now has further resources to increase the retention and graduation rate of Indigenous students. We have been truly moved by Daphne and David's support and generosity in making this investment.

On a personal note, Kris and I were glad to become members of the Order of the Sheaf this year. It is an honour to join this list of names, recognizing those who have demonstrated their commitment to Brandon University and our mission. I would also like to give a special shout out to the large number of BU employees whose names regularly appear on this list. It is both humbling and gratifying to know that the people who make up our community are so committed to its success.

Sincerely,

A handwritten signature in black ink that reads "David Docherty". The signature is fluid and cursive, with a large, sweeping flourish at the end.

**Dr. David Docherty**  
**President and Vice-Chancellor**  
**Brandon University**

# GREETINGS FROM THE BU FOUNDATION PRESIDENT



On behalf of our Foundation membership, I want to thank our donors, friends, alumni, faculty and staff for the strong financial support and commitment we received this past year. More than \$2.8 million was given to Brandon University to be used for scholarships, bursaries, academic initiatives and resources and university improvements. Wow!

The Brandon University Foundation was established in 1980. During this past year three of its founding members, Dr. Harold Perkins, The Honourable Ron Bell and Don Penny, passed away. This trio and their colleagues had the foresight to recognize increased education costs and that student financial need would be a reality. They really made a difference. Many of their systems and policies are still used today. Since the inception of the

BU Foundation more than \$59 million has been distributed to the university and we have built up a large number of endowment funds. The donors listed in this report have made this possible. They live all over the world and are from all demographics.

Due to the COVID-19 pandemic, we held our Annual General Meeting electronically and cancelled the luncheon where we normally make the Order of the Sheaf presentations to our donors. We look forward to recognizing and thanking these donors at a later date when it is safe to do so. Please read about some of the wonderful examples of their generosity on pages seven through nine of this report.

If it has been years or decades since you last visited the BU campus, please stop by during your next Brandon visit (when it is safe to do so, of course). Check out the Original Building, Clark Hall, the John E. Robbins Library, the Queen Elizabeth II Music Building and our many other fine buildings. Don't miss BU's latest bricks and mortar project, the Healthy Living Centre, located on the south side. It is a great addition to the campus and to the City of Brandon. Enjoy the good vibes you always feel while on campus and talk with our students. If you need assistance, visit the Advancement Office on the first floor of Clark Hall with any

This trio and their colleagues had the foresight to recognize increased education costs and that student financial need would be a reality. They really made a difference.

questions, a request for directions, or for a campus tour.

I will close my first report by thanking our many past board members who served over the years and only hoped for the results we are achieving today. Our current hardworking board members are terrific and have only one goal — a better Brandon University. If you have any suggestions for improvements we welcome your input.

Sincerely,



**Robert R. McLennan '75**  
**President**  
**Brandon University Foundation**

**Brandon University Foundation was incorporated in 1980 to promote the advancement of higher education at Brandon University and improve the quality of its facilities and activities. Since its inception, the BU Foundation has helped to raise and continues to steward more than \$70 million.**

## Executive

Mr. Robert McLennan – President  
Mr. Dwight Conroy – Vice-President  
Dr. William Myers – Past-President  
Mrs. Tilda Fortier – Treasurer

## Members

Mr. Kerry Auriat  
Mr. Ray Berthelette  
Mr. Laurence Bertram

Mr. Gerald Butler  
Mr. Jeff Cristall  
Ms. JaysaLee Davies  
Mr. Jeff Fawcett  
Mr. Kevin Hooke  
Ms. Leah LaPlante  
Mr. Michael Leech  
Ms. Lavone Lesperance-Caron  
Mr. Chad McNish  
Dr. Donna Michaels  
Dr. Hamid Mumin

## Ex-Officio

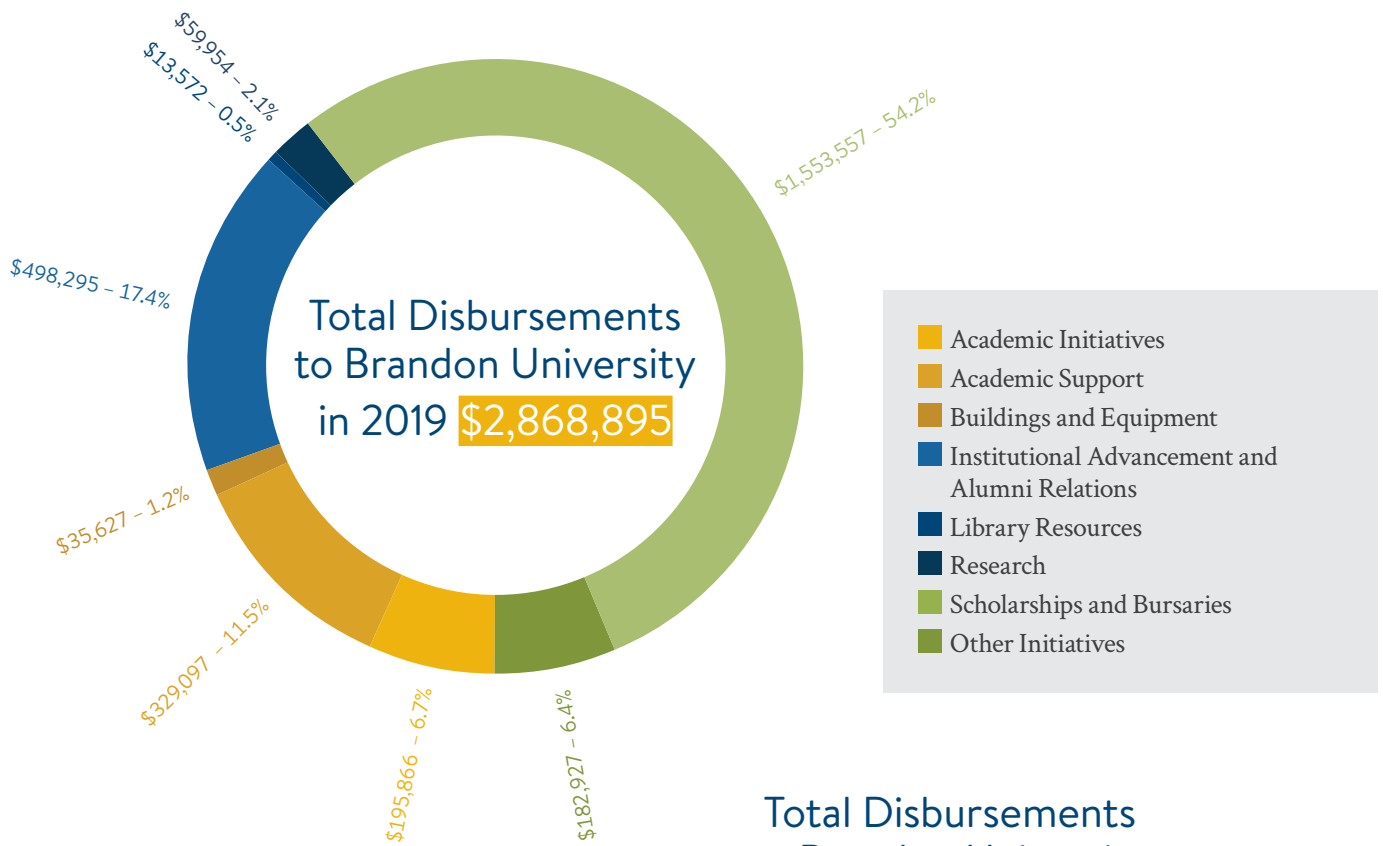
Dr. David Docherty – President & Vice-Chancellor  
Dr. Steven Robinson – Vice-President (Academic & Provost)  
Mr. Scott Lamont – Vice-President (Administration & Finance)  
Ms. Carla Eisler – Director, Advancement & Alumni Affairs  
His Worship, Mayor Rick Chrest

# Statement of Financial Position

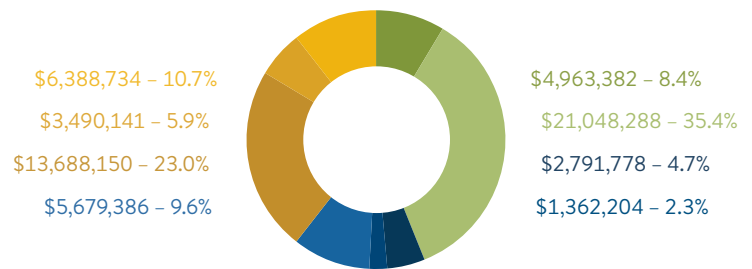
As at December 31, 2019

Assets	2019	2018
Current Assets	\$889,630	\$406,423
Investments	72,988,750	66,221,441
<b>Total Assets</b>	<b>\$73,878,380</b>	<b>\$66,627,864</b>
<b>Liabilities and Net Assets</b>		
Current Liabilities	1,540,016	1,426,408
Deferred Contributions	7,398,678	6,962,939
Net Assets		
Unrestricted and Internally Restricted Funds	13,602,363	10,299,844
Endowment Funds	51,337,323	47,938,673
<b>Total Liabilities and Net Assets</b>	<b>\$73,878,380</b>	<b>\$66,627,864</b>
<b>Selected Financial Information</b>		
Endowment Fund Donations	1,250,366	462,101
Restricted Donations	453,798	637,029
Unrestricted Donations	163,326	137,105
<b>Total Donations</b>	<b>\$1,867,490</b>	<b>\$1,236,235</b>
Gifts in Kind	163,525	21,064
Other Contributions	146	278
<b>Total Donations and Contributions</b>	<b>\$2,031,161</b>	<b>\$1,257,577</b>
<b>Total Disbursements to Brandon University</b>	<b>\$2,868,895</b>	<b>\$2,807,237</b>

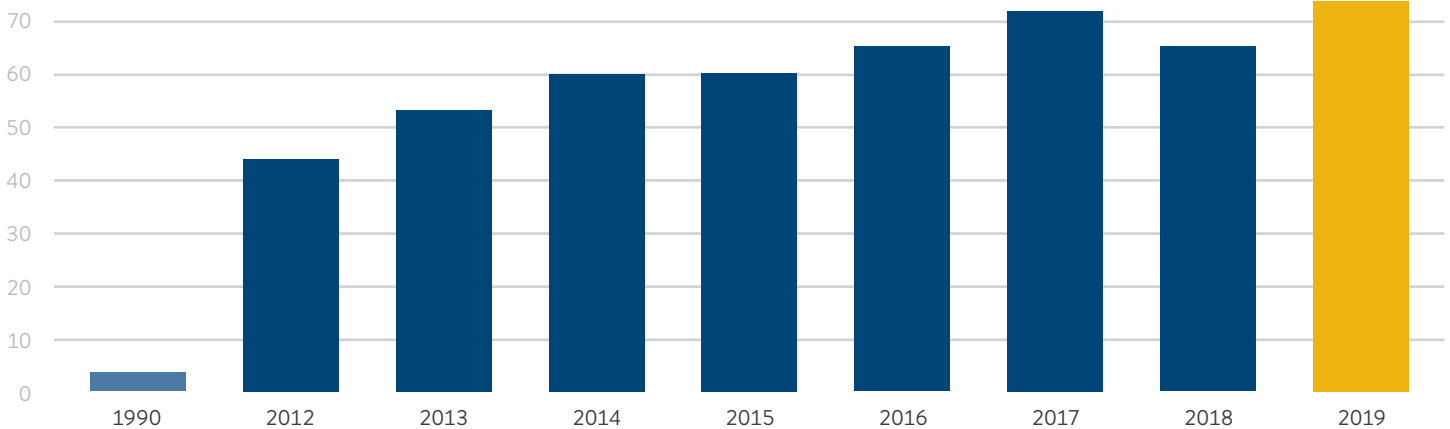




### Total Disbursements to Brandon University Since 1980 **\$59,412,063**



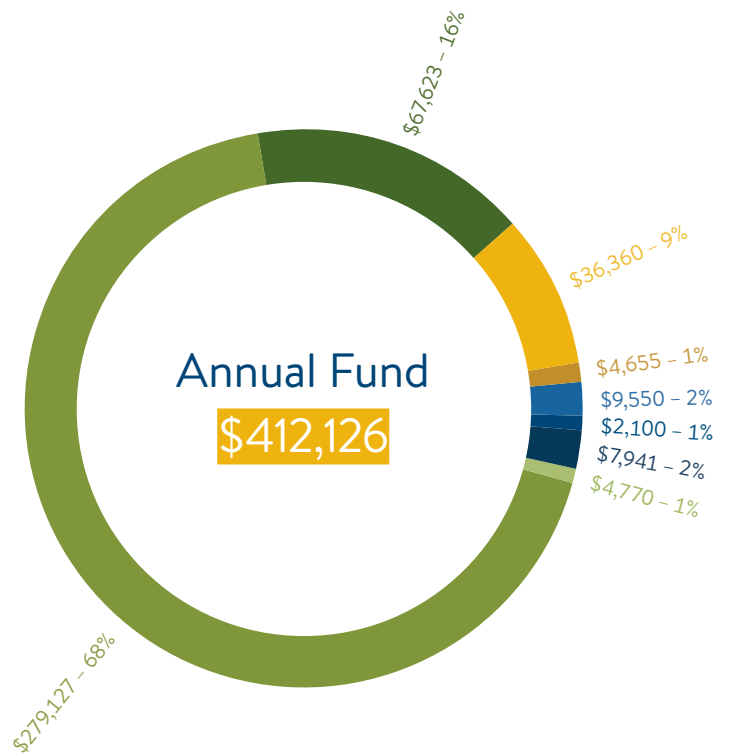
### Net Assets Held by the Brandon University Foundation (in millions)



# More than \$400,000 raised through Annual Fund

Thanks to the generosity of BU alumni and friends, \$412,126 was contributed through the Annual Appeal in 2019. This is an increase of more than \$100,000 over what was received in 2018.

These contributions directly improve programs and services for students, enhance each of our five faculties and schools, and significantly increase student awards. Gifts made to the general campaign provide the university with the flexibility to use funds when and where they are most needed.

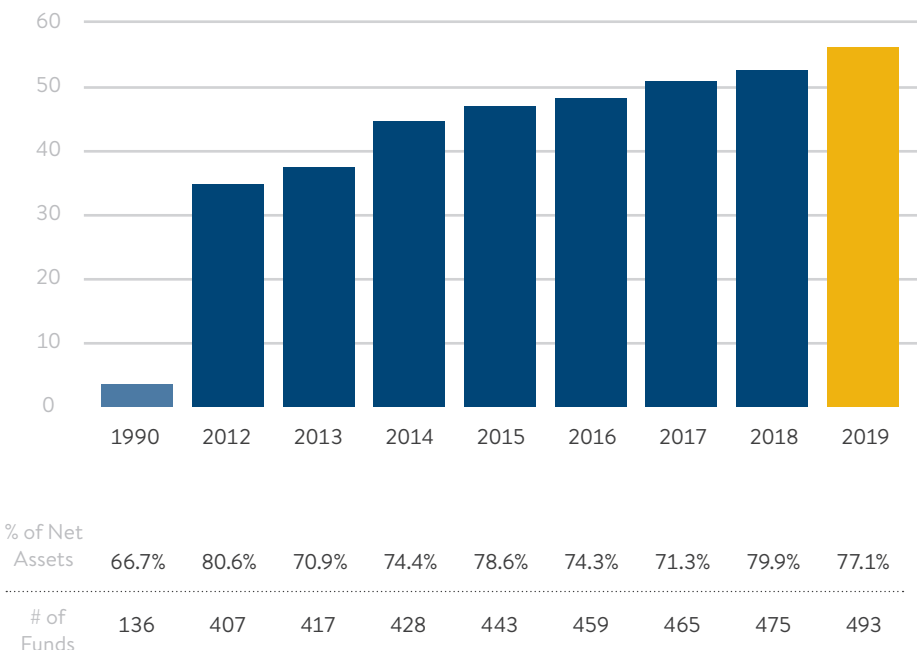


## New Endowments in 2019

- Garry Atchison Scholarship in Science
- Brandon College Capettes – BU Bobcats Women’s Basketball Alumni Scholarship
- Verne & Marie Brown Jazz Scholarship
- Stewart Farnell Memorial Scholarship
- Dr. Gervan Fearon & Dr. Kathy Moscou Bursary
- Shirley And Dalton Gadbois Memorial Scholarship in Psychology
- Donovan Gayle Memorial Basketball Award
- Murray G. Hannah Geography Student Travel Fund
- Brent Legg Scholarship in Music Theory or History
- Georgina M. Legg Memorial Scholarship in Winds
- Manitoba Association of Plant Biologists Award
- The Mom & Dad Bursary
- Rivers Collegiate – Brandon University Scholarship
- Professor Al Rogosin’s Senior Biology Scholarship
- Dr. Meir Serfaty & Bonnie Serfaty Talbot Scholarship
- Clive Richard Taylor Fund
- Esuke Toke Nursing Scholarship
- The Whidden Love of Learning Scholarship

- General Campaign
- Faculty of Education
- Scholarships and Bursaries
- Faculty of Arts
- School of Music
- Other
- Faculty of Science
- Faculty of Health Studies

## Endowment Funds (in millions)



# Supporting Students

## Significant gift will launch Al & Bee Wagner Indigenous Transition Program

Brandon University alumna Daphne Wagner and her husband David Green, along with their children Lita and Michael, have committed one of the largest gifts ever received by BU. The donation will fund a new program to help Indigenous students entering Business, Science or Health Studies transition effectively to university life.

Named for Daphne's parents, the Al & Bee Wagner Indigenous Transition Program is expected to launch this fall and will support students through the completion of their degrees.

"David and I believe that education is a powerful tool to improve lives, and enhance self-sufficiency, not only for the individual but for family and community," said Wagner, a 1979 BU graduate who has Bachelor of Music and Bachelor of Arts degrees. "We are privileged to partner with Brandon University to increase the reach and efficacy of their existing programs." Wagner and Green also previously funded the Al & Bee Wagner Bursary in Music.

"This is about supporting young Indigenous adults through their entire



Daphne Wagner and David Green with their children, Michael and Lita.

university journey, including academic and cultural resources, from their first entrance to university and on through a successful graduation," said BU President Dr. David Docherty.

The gift will be delivered over the next five years and will fully cover startup

and costs for those years of the program, as well as its regular assessment. The coordinator for the program will work with BU, local knowledge-keepers, and Indigenous communities to create a program that will best suit the academic, cultural and community needs of Indigenous students.

## DID YOU KNOW?

**Gifts to Brandon University Foundation are tax-deductible.**

If you have any questions about making a contribution or are interested in discussing a planned gift, please contact us:

Office of Advancement & External Relations  
270 18th Street, Brandon, MB R7A 6A9  
204-727-7374 or 877-282-4483  
Advancement@BrandonU.ca

**Or give online at [BrandonU.ca/Give](https://BrandonU.ca/Give)**

## BU supporter maximizes tax benefits with gifts of securities



Pat Bowslaugh '60, '71, '76

Pat Bowslaugh has a long history with Brandon University. She received her Teacher Training Certificate from Brandon College in 1960, and a BA and BEd from Brandon University in 1971 and 1976, respectively.

After a 39-year teaching career with the Brandon School Division, she continued her journey with BU, teaching for 11 years in the Faculty of Education and helped initiate BU's Master of Education Program. Her two sons were BU students, and one of her granddaughters has just graduated, having completed a BA and BEd.

Bowslaugh's connection to BU continues through annual gifts she makes to the institution she holds

so dear. She recently started making contributions to BU via gifts of securities (stocks, bonds, and mutual funds). Since the elimination of the capital gains tax on gifts of publicly traded securities to charitable organizations, donations such as these maximize the tax savings for donors. By transferring shares to the Brandon University Foundation, Bowslaugh saves any capital gains tax she would have paid had she sold the shares, and she gets a charitable tax receipt for the full value of the shares received by the BU Foundation.

For more information on donating gifts of securities, talk to your financial advisor, or contact the Office of Advancement at 204-727-7374.

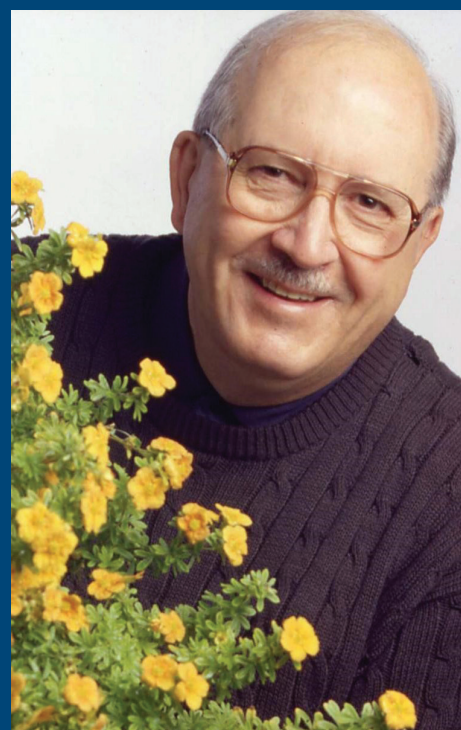
## “Pink Beauty” Bursary pays tribute to parents

The Mom and Dad Bursary established by Louis M. Lenz honors his mother and father for their encouragement and support throughout his education. Born and raised in rural southwestern Manitoba, Lenz graduated in 1957 from Brandon College with his Bachelor of Science degree. He continued his education and passion in the field of Plant Biology, going on to earn a Bachelor of Science in Agriculture from the University of Manitoba and a Master of Science from The Ohio State University. Now retired, he taught in the Plant Science Department at the University of Manitoba from 1964 to 1995.

Lenz is famously known for his Pink Beauty Potentilla, a cultivar of potentilla which he created through plant breeding and received the prestigious Royal Horticultural Society Garden Merit Award, along with another of his

notably popular varieties, the Mango Tango Potentilla. The potentilla is a favorite among locals for its long bloom period and deer-resistant characteristics. The small shrub features distinct semi-double blooms and bright green foliage and is the perfect addition to any landscape. This award has been made possible through the royalties Lenz receives for his plant creations that continue to sell in the tens of thousands annually.

Throughout his 30-plus years of teaching and research, Lenz was a beloved mentor to his students, offering guidance, knowledge and encouragement throughout their education. He takes great pride in the friendships he has created and enjoys nothing more than sharing the successes of his former pupils. Through this bursary he intends to pay tribute



Louis M. Lenz '57

to all parents for the important role they play in supporting their children's success through higher education.



## Gifts celebrate lifelong love of music with instrument, awards

Celebrating his longtime dedication to the School of Music, Brent Legg has established two new awards, the Brent Legg Scholarship in Music Theory or History, and the Georgina M. Legg Memorial Scholarship in Winds, in memory of his mother. Each will generate an annual award of approximately \$2,250. Both awards will support students in their pursuit of music education with the intention of fostering a lifelong love of and interest in music.



Student Kayla Hay plays a contrabassoon donated by alumnus Brent Legg.

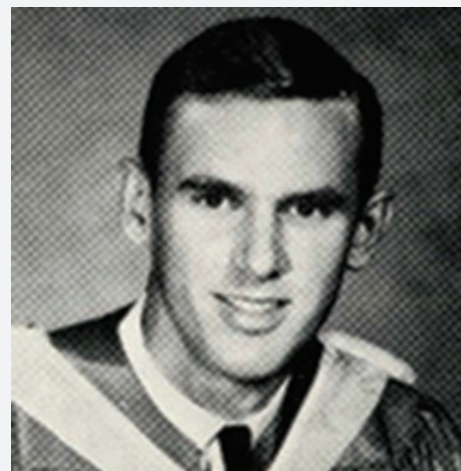
Legg's love for music stemmed from his close relationship with his mother and was always a large part of his life. Born and raised on a farm in southwestern Manitoba, he attended school in Pipestone and Reston before continuing his education at Brandon University. He completed a Music degree in 1985, followed by a Bachelor of General Studies in 1989, and a Master in Music Education in 2006. From 1989 to 2016 he worked for BU in various roles including serving as an Assistant Director with the Collegium Musicum, and in the Theory and History Department of the School of Music.

In 2009, he became the Director of the Collegium Musicum. Along with an active performing career, Legg continued to teach with the Eckhardt-Gramatté Conservatory of Music until his retirement in 2016, rounding out a 35-year history with BU.

In addition to establishing these two scholarships, Legg has generously gifted a new contrabassoon to the School of Music. The contrabassoon is a very deep-sounding woodwind instrument that plays in the same sub-bass register as the tuba. It has a sound range beginning at B<sup>b</sup> and extending up three octaves.

Legg's generosity will impact students for generations to come.

## Generous bequest from three-time Brandon University graduate



Clive Richard Taylor, BA '68, BED '70, BGS '80

Clive Richard Taylor was born in Folkstone, County of Kent, England in 1947. He came to Canada as a young child with his mother and father, settling in Winnipeg for a period of time. The family eventually moved to Brandon where he attended elementary and high school and later Brandon University. Between 1968 and 1980 he completed degrees in Arts, Education, and General Studies at BU.

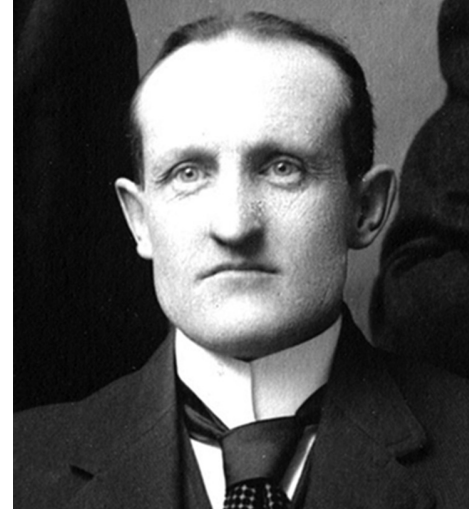
After completing his education Clive went on to teach in the Brandon School Division, spending most of his career as a Physical Education teacher at J.R. Reid School. Loved by his students and very much appreciated by his co-workers and friends, Clive continued to volunteer at the school long after his retirement. He coached junior high volleyball for many years, and loved travel, horses, and dogs.

Since his recent passing, Brandon University has received a sizable bequest from Mr. Taylor, to be directed to programs at the University that are related to the enhancement or improvement of medical care and nursing care in honour of his mother, Margaret Florence Taylor.

# The A.E. McKenzie Legacy Society

The A. E. McKenzie Legacy Society is named in honour of Dr. Albert Edward McKenzie. The owner of a Brandon seed firm, he led a committee of the Chamber of Commerce in the 1930s whose task it was to keep the College open, often traveling with the College President, Dr. J. R. C. Evans, to help raise much-needed funds. He was the first person to leave a legacy gift to the institution. This gift, given at the height of the Depression, saved the institution from certain closure.

Many others have since generously supported Brandon University through gifts in their will, gifts of life insurance, or through other methods of legacy giving, each making a significant impact on our institution. We are pleased to thank and recognize the following members of the A. E. McKenzie Legacy Society.



Albert Edward McKenzie, circa 1912. Photographer: Davidson & Gowen, A.E. McKenzie Seed Co. Ltd. fonds (5.21.3.5), S.J. McKee Archives, Brandon University.

Dr. K.A.H. Adams '55  
 Joy A. Adams Bauer '81  
 Garry '64 & Cheryl Atchison  
 Garth Baker  
 Dr. Dylan W. Benson '97  
 David H. Bergman '63  
 Dr. Bill Bigelow '33, '67  
 Dr. Carl Bjarnason '48  
 Elaine A. Bollman '71, '76  
 Michael Boris  
 Kathleen Addrene Bowler '32, '33  
 Patricia A. Britton '87  
 Gerald R. Brown '56  
 Florence M. Brownridge '49  
 Dr. Glen '77 & Heather Carruthers  
 Dr. William '46 & Patricia '45 Chefurka  
 Dr. Anthony Chow '64  
 Romain Chubak

Robert & Tara Clark  
 Robert A. Clement '30  
 Bob '61 & Mary (Pothorin) '61 Coleman  
 Dilys Collier '58, '80  
 Christine H. Coltart '46  
 Donald '38 & Mary Crerar  
 Ernest E. Criddle '52  
 Florence Dalman  
 Margaret L. Davison '50  
 Cam Davreux '59  
 Jacqueline M. Derhak  
 Rt. Honourable John Diefenbaker  
 Margaret Alison L. Doak '63  
 E.K. Dobson-Golletz '79 &  
 Richard N. Golletz '81  
 Isabelle Douglas  
 Jean C. Downing '41  
 Norma D. Dunphy

J. Kelly Edmison  
 Margaret Eggleton '41  
 Maxine Ellend  
 Leo Evason '54  
 Thomas F. Fenwick  
 W. Craig Ferguson '50  
 Karen E. Fingas '68  
 Christy Ann Fitzpatrick  
 Dr. Bruce Forrest  
 Pamela Forsyth  
 Homer '70 & Wilma Gill  
 Dr. George K. '64 & Mary '42 Gooden  
 Margaret E. Goodman '49  
 Yvan '86 & Lucie '78 Gosselin  
 Marie Graham  
 J. Hargreaves-Mawdsley  
 Carol A. Hendrickson  
 Wendell Hewitt-White '36  
 Dr. Hugh Graham Hunt '51  
 Alice & Donald Hurd  
 Dorothy Hope Kitchen  
 Micki & Lawrence Kuzenko  
 Margaret E. Lair  
 Dorothy Lake  
 Brent Legg '85, '89, '06  
 Margaret A. MacKenzie '38  
 Gordon C. MacPherson  
 Dr. John & Paula Mallea  
 Gail Marriott '58  
 Robert McLennan '75  
 Dr. Wilfred McCutcheon  
 Eileen McFadden '53  
 Albert E. McKenzie  
 Dr. Warren McKinnon '62 &  
 Janice Waud Loper  
 Dr. Thomas H.M. '40 &  
 Beryl '44 McLeod  
 Jack McMillan '60  
 W. Glen '47 & Eunice M. '48 Milne  
 Ronald S. Moore  
 George & Maxine Moore

Dr. M. Venkat Rao &  
 Premalatha '96 Naidu  
 Maria C. Nelson '25  
 Dr. Kenneth Nichols  
 Alexander W. Paul  
 Drs. Andrew & Nan Pernal  
 Eva Emeline Pickard  
 Louis M. Quennelle  
 Bryce Reikie  
 Dr. Ron & Gail Richert  
 Dr. Helen Riesberry '42  
 Dr. John E. Robbins  
 Margaret M. Roberts '41  
 Dr. Anne Selley Robertson '37  
 Joseph H. Robertson '39  
 Evelyn Robinson  
 Kathleen J. Rowe '34, '70  
 Dr. Allan '75 & Rae Ryan  
 Philippa K. Saul '41  
 Dora Ann Scott  
 Dr. Victor '39 & Phyllis '39 Sharpe  
 Douglas Simpson  
 Andreas Souvaliotis '84 & Joe Gisini  
 Margaret Speers '28  
 Dorothy E. Stewart  
 Austin Stoll  
 Elizabeth '65 & Eugene '72 Storeshaw  
 Lawrence Stuckey '97  
 Don A. Sullivan  
 Adam Sus  
 Clive R. Taylor '70  
 Angela Thompson '48  
 Evelyn & Melville Turnbull  
 Dr. Lorne Watson '93  
 Sharon L. Wickman '70  
 Donna Wilkins '72, '74  
 Dr. Gordon '55 & Renate Williams  
 Cristine E. Winkler  
 Iva Jane (Delamater) Wood '44  
 Ivy '54 & Norval Young  
 Laura Young  
 A Generous Person (5)



Brandon College Science students, circa 1942. Martin Johns fonds (8-2009.14), S.J. McKee Archives, Brandon University.



# Order of the Sheaf



For more than 120 years, Brandon University has received an enormous amount of financial and volunteer support from individuals and organizations.

**We thank you.**

The Order of the Sheaf is an honour society that recognizes those whose financial support has helped to ensure the advancement and quality of higher education at Brandon University.

This year we are pleased to report that 38 new members have been inducted into the Order of the Sheaf and 20 members have advanced to a higher philanthropic level. Membership in the Order of the Sheaf begins automatically when a donor reaches a cumulative gift level of \$1,000 or more. Recognition levels are based on a donor's total contributions to Brandon University.

Donors listed in ***boldface italics*** advanced to a new level of recognition in 2019; those listed in **boldface** indicate that the donor is new to the Order of the Sheaf. Every effort has been made to ensure that this report is accurate and complete. Please report any errors or omissions to the Office of Advancement and External Relations at 204.727.7374, 1.877.282.4483 or [Advancement@BrandonU.ca](mailto:Advancement@BrandonU.ca).

## Outstanding Philanthropist

**\$5,000,000+**

Joseph H. Robertson '39

## Chancellor's Honour Roll

**\$1,000,000 - \$4,999,999**

Dr. Bruce Forrest  
James Richardson & Sons Ltd  
The Louis Riel Institute  
Manitoba Metis Federation Inc  
Pioneer Grain Company Limited  
Richardson Foundation  
Richardson Greenshields of Canada Limited  
The Winnipeg Foundation  
A Generous Person

## Patron

**\$500,000 - \$999,999**

Kirk Brugger  
Michael & Dorine '51 Chernoff  
Dr. Ferdinand Eckhardt & Dr. Sophie Carmen Eckhardt-Gramatté  
The J.W. McConnell Family Foundation  
Dr. Viola Lobodowsky  
Manitoba Hydro  
PepsiCo Beverages Canada  
**Clive R. Taylor '70**  
A Generous Person

## Benefactor

**\$100,000 - \$499,999**

Garth Baker  
Dr. Jeff Bales & Dr. Trudy Corbett  
The Honourable R.D. Bell, LLD  
Dr. Harvey & Irene Bergner  
Blue 292, Inc.  
Marion E. Bowen  
Brandon Area Community Foundation  
Brandon Clinic Medical Corporation  
Dr. James '44 & Lucille Brown  
James William Burns  
Canadian Imperial Bank of Commerce  
Canexus (Nexen)  
Dr. William '46 & Patricia '45 Chefurka  
Connor, Clark & Lunn Foundation  
Mary Irene Cowan  
Craig Broadcast Systems Inc.  
**Tom D. E. Deacon**  
Margaret Eggleton '41  
Steve Gouthro & Jennifer Woodbury  
Great-West Life Assurance Company  
GreenRidge Business Systems Corporation

The Greiner Family/Victoria Inn  
Stewart B. Hobbs '55  
Investors Group  
ISM Information Systems Management Corporation

Kinsmen Club of Brandon  
Dorothy Hope Kitchen

**Julie Ann Kniskern**

**Brent Legg '85, '89, '06**

Manitoba Agriculture, Food and Rural Development  
Manitoba Blue Cross

Manitoba Chartered Accountants Foundation Inc.

Dr. Wilfred McCutcheon

Richard '60 & Verda '55 McDonald

Albert E. McKenzie

Dr. Thomas H.M. '40 & Beryl '44 McLeod

Jack McMillan '60

MNP LLP

Petro-Canada

R. Howard Webster Foundation

RBC Foundation

Dr. Anne Selley Robertson '37

Simplot Canada Limited

Douglas Simpson

Mary Smart

Dorothy E. Stewart

Maurice F. Strong '68

Gwendolyn (Munt) Sutherland '37

TD Canada Trust

Thomas Sill Foundation Inc

Tundra Oil & Gas Partnership

Evelyn & Melville Turnbull

Vale

Viterra Inc

**Daphne Wagner '79 & David, Lita & Michael Green**

Wawanesa Mutual Insurance Company

Lewis D. Whitehead

A Generous Person (5)

## Founder

**\$50,000 - \$99,999**

A.E. McKenzie Company Limited  
**Sandra L. Armstrong '72**  
Bank of Montreal  
Bell MTS  
Brandon Regional Health Centre Auxiliary  
Brandon University Faculty Association  
Brandon University Students' Union  
Tom & Janie Breneman  
Florence M. Brownridge '49  
Donald R. Burns & Louise Berlin  
Butler Family Foundation  
Canadian Natural Resources Ltd  
Canadian Pacific  
Cargill Grain Limited  
Carolyn Sifton Foundation Inc  
The Honourable Sharon Carstairs, P.C.  
Chevron Canada Resources Ltd  
Christine H. Coltart '46  
Convergys Corporation

Dr. Samuel Corrigan  
 CPA Manitoba Foundation Inc  
 David Cunningham  
 Michael Decter Family Foundation  
 Jean C. Downing '41  
 Dr. Paul Duprat  
 Enbridge Pipelines Inc  
 Kathryn M. Gardner '34  
 Dr. John Welsted & Kathleen Georgison  
 Margaret E. Goodman '49  
 Green Acres Lodge 1967-2011  
 J. Hargreaves-Mawdsley  
 Heathbridge Capital Management Ltd  
 Ron F. Helwer  
 Glenn '70 & Linda '70 Hockley  
 Alice & Donald Hurd  
 Jacobson & Greiner Group  
 of Companies  
 Kiwanis Club of Brandon  
 Leech Printing Ltd  
 Dr. Peter & Mary Letkeman  
 Dr. Leo & Shirley Liu  
 Russell W. Lusk '65  
 Manitoba Education & Training  
 Manitoba Law Foundation  
 Manitoba Teachers' Society  
 Eileen McFadden '53  
 David Moxley  
 Dr. M. Venkat Rao &  
 Premalatha '96 Naidu  
 The National Centre for Crisis and  
 Continuity Coordination  
 Sherry L. Peden '04 & Leo Nijssen  
 Dr. Deborah Poff & Dr. Alex Michalos  
 Prairie Ford Dealers Association  
 Jim Reynolds  
 Dr. John E. Robbins  
 Philippa K. Saul '41  
 Dr. Benjamin Shore  
 Margaret Speers '28  
 Lawrence Stuckey '97  
 Adam Sus  
 Angela Thompson '48  
 Trenchline Holdings Inc  
 Vionell Holdings  
 The W. Garfield Weston Foundation  
 Dr. Lorne Watson '93  
 Whitehead Foundation for Western  
 Manitoba Inc  
 Dr. Jay Te Winburn

## Clark Hall Guild

**\$10,000 - \$49,999**

Peter J. Adamo '00 & Elizabeth  
 Rodriguez-Adamo  
 Joy A. Adams Bauer '81  
 AGE Electrical Consulting Ltd  
 Doug W. Adams '87  
 Ag Quest Inc  
 Agrico Canada Ltd  
 Agrium Inc  
 AIC Enterprises Ltd  
 Paul Albrechtsen  
 Alcan Aluminium Limited  
 AMI Partners Inc  
 Dr. Clifford & Mrs. Julia Anderson  
 John M. Andrews '52

APEGM Foundation Inc  
 ArcelorMittal Dofasco  
 Harlaine Irma '48 &  
 Norman '42 Armstrong  
 Associated Canadian Travellers  
**Garry '64 & Cheryl Atchison**  
 AUCC  
 Kerry Auriat '87  
 Ray '45 & Barb Bailey  
 Baker Colony Charitable Trust  
 BDO Dunwoody (Brandon Office)  
 Dr. Robert Beamish '37  
 Gerald '77 & Joyce Beaubier  
 Giselle Rachelle Beaupre '84  
 BelAir Energy Corp  
 Bell Canada  
 Beta Sigma Phi  
 Dr. Bill Bigelow '33, '67  
 Dr. Kissonpersad & Nazrah Binda  
 Binkley Motors (1983) Ltd  
 The Birks Family Foundation  
 Dr. Carl Bjarnason '48  
 John Blaikie  
 Elaine A. Bollman '71, '76  
 Michael Boris  
 Michael Bouchard '93  
 Patricia '71, '76 & Cliff Bowslaugh  
 Brandon Chamber of Commerce  
 Brandon Regional Health Authority  
 The Brandon Sun  
 Brandon University Alumni Association  
 Brandon Volleyball Club  
 Brandon WUSC Local Committee  
 Dr. Cal & Norma Bristol  
 British American Tobacco (BAT)  
 Brockie-Donovan Ltd  
 Dr. Robert & Catherine Brockway  
 The J. Malcom Brodie  
 Memorial Scholarship  
 Christopher '93 & Jill Brown  
 Gerald R. Brown '56  
 Barrie '57 & May '56 Burch  
 Dr. William C. & Joan B. '72 Burgess  
 Linda '69 & Edward '77 Burridge  
 Gerald '63 & Carmen Butler  
 Cabot Corp Foundation Inc  
 Cadillac Fairview Corporation Ltd  
 Dr. Finley '50 & Barbara Campbell  
 Kenneth Campbell '56  
 Canada Life Assurance Company  
 Canadian Federation of  
 University Women  
 Canadian National Railway  
 Paul & Yvette Cancade  
 Cando Rail Services Ltd  
 The Cardinal Foundation  
 Dr. Dean & Susan Care  
 Dr. T. Patrick & Mary-Jo Carrabré  
 Dr. Glen '77 & Heather Carruthers  
 Castor Lake Holdings Ltd  
 Cats Volleyball Club  
 Shawn '87 & Cecile '89 Chambers  
 Merilyn D. Chaplin '88  
 The Chastell Foundation  
 Christie's Office Plus  
 Cibinel Architecture Ltd  
 Dr. Lee & Barbara '70 Clark  
 Patricia '51 & William (Bill) Coleman

Dilys Collier '58, '80  
 ConocoPhillips Canada  
 Reverend Joseph Edward Cooper '19  
 Dr. Barry Corenblum  
 Dr. Gerald & Sandra Coueslan  
 Douglas '61 & Marguerite '71 Crandle  
 Crane Steel Structures Ltd  
 Donald '38 & Mary Crerar  
 Ernest E. Criddle '52  
 Jeffrey '78 & Patricia '78 Crisall  
 Crocus Credit Union Limited  
 Crocus Lodge Inc  
 Crown Life Insurance Company  
 Crystal Spring Colony  
 Patricia L. Cullen  
 Dr. Andrée Dagenais  
 Dr. Ken Daniels '66 & Faye Douglas '77  
 Karl De Paepe  
 Shari Decter-Hirst '91 &  
 Dr. Derry Decter  
 Dentistry Canada Fund  
 Department of Growth,  
 Enterprise and Trade  
 Paola '94 & Rudy Di Muro  
 Disaster Management Conference  
 Dominion Tanners  
 DuPont Canada Inc  
 Irene Dyck  
 Steve Dzubinski  
 Dr. Joel Edelson  
 Reverend Einar Egilsson '37  
 Maxine Ellend  
 Dr. Emmett '71 & Karen '72 Elves  
 Elysee Development Corp  
 Dr. John English  
 Ensis  
**Enterprise Holdings Foundation**  
 F.W. Woolworth & Company Ltd  
 Jeff '94, '96, '05 & Jodi Fawcett  
 Dr. Gervan Fearon and Dr. Kathy  
 Moscou  
 Federated Co-operatives Ltd  
 Feed Rite  
 W. Craig Ferguson '50  
 Kathleen E. Findlay-Ireland '35  
 Joy '54 (Barton) & Cam '52 Finlay  
 Dr. Cora L. Fisher '62  
 Christy Ann Fitzpatrick  
 Marlene Fitzsimmons  
 Robert J. Ford  
 Kent & Naomi Forman  
 James G. Forsythe  
 Foundation For Registered Nurses  
 of Manitoba Inc  
 Glen Fowler  
 FYidoctors  
 Dr. Rosanne Gasse  
 Gregory & Nancy Gatien  
 GEC Alstom International Canada Inc  
 Gendis Inc. and Associate Corporations  
 General Electric Canada Inc  
 GeoLogic  
 George Heintz & Co. Ltd  
 German Canadian Business &  
 Professional Assoc. of Manitoba  
 Brian Goldberg  
 Goldman Sachs Matching Gift Program  
 Dr. George K. '64 & Mary '42 Gooden  
 William & Kathleen '79 Gordon

Marianne Gottardo  
 Deborah C. Grant  
 Guild Insurance Brokers Inc  
 Brian Hakala  
 Murray & Jean Hannah  
 Dr. C. Emdad Haque  
 T. Garth Harvey  
 Sherry L. Helwer '79  
 Jerry '72 & Marnie Hemmings  
 Teresa Henderson  
 George '62 & Patricia '63 Hickling  
 Evelyn Hinz  
 Ray Hoepfner '91  
 Wayne & Erin Holm  
 Dr. Peter Hordern &  
 Alison McNeill-Hordern '87  
 Scott & Heidi Howarth  
 Hubbay Minerals Inc  
 Hudson's Bay Company  
 Dr. Hugh Graham Hunt '51  
 David Keith Hunter Family  
 Dr. Graham Hurlburt  
 Dr. Kathryn Hyndman & David Ford  
 IBM Canada Limited  
 IHS AccuMap  
 Imperial Oil Limited  
 Imperial Tobacco Canada Foundation  
 David Reid Jackson Jr.  
 David R. Jackson Sr.  
 Kenneth R. James  
 Jake & Judith Janzen  
 The Jewish Foundation of Manitoba  
 The Joe Brain Foundation Inc  
 Muriel E. Jollow '26  
 Byron E. Jones '32  
 Dr. Lawrence & June Jones  
 Dr. Kevin & Els Kavanagh  
 C. J. Hannah-Kayes '95 &  
 Brian A. Kayes '00  
 Kelleher Ford Sales  
 John & Nancy Kelleher  
 In Memory of Carrie Caroline Kennedy  
 Mervyn R. Keys  
 Dr. Ralph F.B. King  
 Kiwanis Club of Winnipeg  
 Foundation Inc  
 Klondike Farms Ltd  
 The Honourable Stanley Knowles '30  
 Betty '43 & Hugh J. '43 Knowlton  
 Jack & Joan Kullberg  
 Sheldon Kumer  
 Labatt Breweries of Canada  
 Labatt's Prairie Region  
 Lafarge Canada Incorporated  
 Melville Lall  
 Dr. Y.L. Jack & Euphemia Lam  
 Scott & Louise '91 Lamont  
 Sergio & Susan Lee  
 Don & Donna Leech  
 Dr. Johanna Leseho  
 Pat Littlejohn  
 Lloyd Carr-Harris Foundation  
 London Life Insurance Company  
 M. Goossen Medical Corporation  
 Dr. Chris & Judith '91 MacDonald  
 Murray '52 & Betty MacDonald  
 Margaret A. MacKenzie '38  
 Dr. John & Paula Mallea





Gerald and Carmen Butler are inducted into the Founder category of the Order of the Sheaf by then-BU Foundation President Dr. Bill Myers (left) and BU President and Vice-Chancellor Dr. David Docherty (right).



Guests at the Order of Sheaf Luncheon 2019.

Manitou Foundation  
 Dr. Henry Mantsch  
 Manufacturers Life Insurance  
 Maple Leaf Foods Inc  
 Sandy Margetts '65  
 Maurice Price Foundation  
**Edward '69 & Marion '70 Mazer**  
 MBH Mechanical Engineering Ltd  
 MBNA Canada  
 Douglas F. McArthur '79  
 McCain Foods Limited  
 Robert '35 & Mary '30 McCulloch  
 Dr. Roderick McGinn  
 Dr. Fred McGuinness  
 McKenzie Seeds Ltd  
 Mr. & Mrs. N.K. McKinnon  
 James D. McManes '75  
 J. Trevor McNeely '55  
 Dr. Kenneth '52 & Helen McNeely  
 Shirley McNeely  
 Grant McPhail & Dale Severyn  
 Margaret E. McPherson '74  
 Meighen Haddad LLP  
 Garry '65 & Colleen '66 Miller  
 Ernest G. '50 & Shirley '50 Miller  
 Wayne S. Miller '72  
 Doreen Millin  
 W. Glen '47 & Eunice M. '48 Milne  
 James R. Minions '55  
 Monsanto Canada Inc  
 Dr. William R. Morrison  
 Jack '51 & Lois '51 Muir  
 Ray Muller  
 Dr. Hamid & Jamilah Mumin  
 The Murphy Foundation Incorporated  
 A. Clair & Mildred Murray  
 Dr. Bob & Joan Myers  
 Bill & Lana Myers  
 David Newman  
 Kathleen M. Nichol '73, '92  
 Dr. Beverley '78 & Sylvia '79 Nicholson  
 Garry Nicol '77  
 The North West Company Inc  
 Dr. Arnold Novak '69

Odgers Berndtson Canada/Vancouver Inc  
 John P. Odin '30  
 Owens Corning  
 P.E.O. Sisterhood Chapter U  
 P.E.O. Sisterhood-Provincial Chapter  
 Russ Paddock  
 Paladin Security Group  
 Brian W. Pallister '75  
 Mike Parnell  
 Trish '84 & Lorne Parobec  
 Bill & Donna Parrish  
 The Senator Norman M. Paterson  
 Foundation  
 Richard Patmore '34 &  
 Hazel Patmore-Skuce  
 Dr. William H. & Eileen Paton  
 Dr. Donald & Sandra Penny  
 Peridot Corp  
 Dr. Harold J. & Mary Louise Perkins  
 Drs. Andrew & Nan Pernal  
 Gordon & Diane Peters  
 Irene '57 & Wayne '59 Pettapiece  
 Eva Emeline Pickard  
 Dr. Douglas A. Pickering & Jeanne Mills  
 Poco Petroleums Ltd  
 Pollard Amalco Inc  
 Portage Mutual Insurance  
 Power Corporation of Canada  
 Provincial Exhibition of Manitoba  
 Harold J. Pullaw '74  
 Dr. Frank J.E. Purdie  
 Wilkins-Tureski: David Tureski  
 Memorial Fund at The Quadrus  
 Charitable Giving Program  
 Queen Mary Chapter #3  
 Order of the Eastern Star  
 Lawrence Racicot  
 Don '49 & Jan Raleigh  
 RCMP Veterans Association Manitoba  
 Division  
 Dr. John & Barbara Rice  
 T.J. Rice Family Foundation  
 Dr. Ron & Gail Richert  
 Dr. Helen Riesberry '42  
 Christopher Riley

Burton Robinson  
 Edward Robinson  
 Evelyn Robinson  
 Dr. Steven & Kelly Robinson  
 Marjorie & Alfred Rogosin  
 Russell '70 & Marjorie Roney  
 Darryl Rosenberg  
**R. Wayne Rosenman '67**  
 Rotary Club of Brandon  
 Kathleen J. Rowe '34, '70  
 Lorraine G. Rozak '89  
 Russell & District Foundation  
 Dr. Gordon Rust & Christy Myers-Rust  
 Kimberley Ryan-Nicholls '87  
 S. Davies & Associates  
 Saan Stores Ltd  
**Salvatora Scaletta**  
 The Right Honourable Edward Schreyer  
 & Lily Schreyer  
 Scotiabank  
 Dora Ann Scott  
 Dr. Meir Serfaty & Ms Bonnie Talbot  
 Ian '78 & Heather Sharpe  
 Peggy Sharpe '35  
 Dr. Victor '39 & Phyllis '39 Sharpe  
 Shaw Communications Inc  
 Ernest K. '51 & Rosa '51 Shaw  
 Shoppers Mall/Morguard REIT  
 Sheldon Shore  
 Curt A. Shoultz '80 &  
 Heather A. Coulter '80  
 Shur-Gro Farm Services Ltd  
 Sikh Community of Brandon  
 Sir Thomas Cropro Foundation Inc  
 Sisters of Our Lady of the Missions  
 Don & Glenora Slimmon  
 Ira Smith  
 Wim Smits  
 Professor Robert Solomon &  
 Dr. Barbara Lent  
 Mr. & Mrs. Michael Sopman  
 John '66 & Diane Spalding  
**St. Andrews Presbyterian Church**  
 St. John's Music Ltd

Dr. Nancy Stanley '65 & Lyle Baker  
 Didi Stepanek & Dr. Harold Fung  
 Dr. David B. '92 & Ruth Stewart  
 Austin Stoll  
 Marion '40 & Ketut Stone  
 Ellen (Vinthers) Strange  
 Sun Life Financial  
 Suncor Energy Foundation  
 Sunnyside Colony  
 Dr. Cameron Symons  
 Taylor McCaffrey LLP  
 Laura G. Taylor '28  
 Mitch & Anne (Franklin) Taylor '65  
 John J. Teunissen  
 Alice E. Theodorou '39  
 Novell Thomas & Annelisa Dey Thomas  
 George E. Thorman '34  
 Tire Stewardship Manitoba  
 Toromont CAT  
 TransCanada Corporation  
 Dr. Michael & Carol Turabian  
 Joyce Tureski '74  
 Dr. Arnold '59 & Glenyce '56, '59 Tweed  
 United Way of Brandon & District  
 Dr. Louis & Mary Visentin  
 Dr. John '87 & Germaine Warkentin  
 Alphonso & Sybil Weekes  
 David S. Weiss  
 Dr. John Welsted &  
 Kathleen Georgison  
 Westcoast Energy Inc  
 Westman Communications Group  
 Westman Communications Group/880  
 CKLQ/94.7 Star FM  
 Westoba Credit Union Ltd  
 Dr. Lynn Whidden '67  
**Sharon L. Wickman '70**  
 Eleanor L. Wilde  
 Myrna L. Wilde & Edward H. Parker  
 Dr. Catherine L. Wilkie '73  
**Donna Wilkins '72, '74**  
 Dr. Jeffrey Williams & Edith Mary Smith  
 Grant S. Wilson '93  
 Wingham Colony Farms Ltd

Cristine E. Winkler  
 Dr. Don Wright  
 Bill & Synthia '83, '96 Wright  
 Dr. Norma Wylie  
 Xerox Canada Incorporated  
 Dr. May Yoh  
 Ivy '54 & Norval Young  
 Dawn Zhou  
 A Generous Person (6)

## Friend

\$5,000 - \$9,999

1266896 Ontario Inc.  
 Dr. K.A.H. Adams '55  
 Air Canada  
 Ray Alexander & Caroline Cramer  
**Drs. J. and D. Allan**  
 Blanche Allison  
 Dr. C. Dennis Anderson '64  
 Grant M. Andres '87 &  
 Barbara L. Fullerton '88  
 Dr. Robert & Mary Annis  
 Elizabeth J. Armstrong '69  
 B.A. Robinson Co. Ltd  
 Ellen V. Bateman  
 Ben Wiebe Construction  
 John Blackwood '54  
 Dr. Michael Blonar  
 BMHC Nurses Alumni  
 Kathleen Addrene Bowler '32, '33  
 Brandon Elks Lodge #14  
 Brandon Lions Club  
 Brandon Rotary Club  
 Westman Foundation  
 Dr. Garth Bray '57  
 Patricia A. Britton '87  
 F. Richard '82, '91 & Doreen Bruce  
 Heather Bruce & Doug Bruce  
 Gary & Trish Buckley  
 BUNTEP  
 Canada Safeway Limited  
 Canadian Airlines International  
 Canadian Motors Ltd  
 Canadian Tire  
 Dr. Deborah Caplan  
 Debra Carnegie '76  
 Dr. Noah H. Carpenter  
 Cascade Colony Farms Ltd  
 Centra Gas Manitoba Inc  
 Dr. Francis Chaplin  
 Jean Chase '30  
 Dr. Anthony Chow '64  
 John Chzyk  
 Clearwater Colony Farms Ltd  
 Clare '59 & Darlene Coburn  
 Dr. Glenn E. Cockerline  
 Gerald Collyer '68  
 Melanie J. Colquhoun '90  
 Bruce '76 & Cheryl '76 Craig  
 Arthur & Eleanor Cristall  
 Diane Cristall  
 Ferne Cristall  
 Neil J. Cristall '82  
 Michael Czuboka '57  
 Leon Dadoun  
 Dafa Enterprises Limited  
 Cam Dalmyrn

Dr. James W. Darlington  
 Malcolm W. Davidson '63  
 Decker Colony  
 T.E. Deller '79  
 Delta Kappa Gamma Society  
 International  
 Dr. Ian '58 & Donna '60 Dickson  
 Margaret Alison L. Doak '63  
**E.K. Dobson-Golletz '79 &  
 Richard N. Golletz '81**  
 Isabelle Douglas  
**The Duncan Family**  
 J. Kelly Edmison  
 Marion Edmison '35  
 Education Students Society  
 Ruth A. Emisch '75  
 Neil R. Enns '96  
 Paul Enns '03  
 Dr. Werner Entz  
 F.K. Morrow Foundation  
 Fairholme Colony  
 Norma & Robert Farquharson  
 Thomas F. Fenwick  
 Edward & S.E. Finch  
 First Presbyterian Church  
 Gladys H. Fisher  
 Eric Foss  
 Bill Fotheringham  
 William J. Friesen '58  
 Dr. Harold Fung Medical Corp  
**Dr. Shannon Gadbais and  
 Dr. Dean Beaubier '88**  
 Genetically Advanced Pigs  
 Dr. Barbara Gfellner &  
 Dr. Gerald Dueck  
 Glenway Colony Farms Ltd  
 Charles E. Gorrie '69  
 Anna Grandhi  
 Cordell D. '71 & Elizabeth '69 Grant  
 Josephine Green  
 Dr. Lawrence Groves  
 H.J. Heinz Company of Canada  
**Dr. Pandelis & Helga Halamandaris  
 Grant Hamilton '04 & Amy Breen '09**  
 The Happy Corker  
 Dr. James Hardy  
 Lillian Harris '84  
 Harrison McCain Foundation  
 Dr. Wayne Harrison  
 Dr. William '43 & Phyllis Harwood  
 Dr. Gordon D. Hasick  
 Allen '55 & Myrna Hattie  
 Dr. Bryan Hill  
 Hollinger Incorporated  
 Dr. Susan Holm  
 Winnifred Holmes  
 Glenn & Sharon Hooper  
 Gordon & Sunni-June Hubbard  
 Patricia Hurlburt  
 International Brotherhood of Electrical  
 Workers Local 2034  
 IODE Diamond Jubilee (1960) Chapter  
 IODE Teck Chapter  
 Dr. Ronald S. Jackson  
 John Labatt Foundation  
**Angus '51 & Devona Jukes**  
 Dr. T. Andrew '45 & E. Zenella '45 Judson  
 The Keg  
**Clara Keough**

Murray '88 & Leila Kerr '89  
**Dr. R. Garth Kidd '56**  
 Stefan Kossak  
 Nicola Kozakiewicz  
 Nina Kozakiewicz '65  
 Kullberg's Furniture Limited  
 Lee Choy Limited  
**Louis M. Lenz '57**  
 Dr. & Mrs. R. Mervyn Letts '61  
 Long & McQuade Musical Instruments  
 Donna A. Lowe '91, '02  
 Heather Macdonald & Ron Maher  
 Reverend Archie J. '33 &  
 Kathleen MacLachlan  
 MacLean Hunter Limited  
 Norman W. MacLeod '48  
 Gordon C. MacPherson  
 Alexander & Phyllis Madryga  
 Colin Mailer '65, '68  
 Manitoba Arts Council  
 Manitoba Arts Gaming Fund  
 Manitoba Association for  
 Resource Recovery Corp  
**Manitoba Association  
 of Plant Biologists**  
 Manitoba Community Development  
 Corp. Assoc. Inc  
 Manitoba Federation of Labour  
 Manitoba Government and General  
 Employees' Union  
 Manitoba Hockey Players Foundation  
 Manitoba Teachers Society  
 Brandon Association  
 Manitoba Women's Institute  
 Masonic Grand Lodge of Manitoba  
 Ancient Free and Accepted Masons  
 Masonic Past Masters Association  
 Mazer Group  
 Dr. Mervyn A. McArthur  
 Margaret McCurdy  
 Gordon McDiarmid  
 McDonald's Restaurants  
 of Canada Limited  
 Dr. Robert McDougall '86  
 Marie McGinn  
 David '69 & Sharon '69 McInnes  
 James McKibbin '53  
 Dr. Warren McKinnon '62 &  
 Janice Waud Loper  
 The McLean Foundation  
 Robert McLennan '75 & Joan Horsley  
 Dr. George & Sandy McMaster  
**Ivey '51 & George McNeill**  
 F. Jean McQuarrie '63  
 Dr. Neil McQuarrie &  
 Sherry M. Wallman '74  
 Harold Medjuck  
 Maico Meier  
 Mercury Graphics  
 Kathryn & Robert Merrett  
 Dr. Donna Michaels  
 Ronald S. Moore  
 Dr. Kathleen '85 & Dr. Daniel Moquin  
 Mr. Submarine Limited  
 Judge Rodney Mykle '66 & Lori McBeth  
**NetSet Communications,  
 a Division of Xplornet Inc.**  
 New Haven Colony Charitable Trust  
 Newdale Colony Ltd  
 Dr. Kenneth Nichols

Phillip Noonan & Judy Nixon  
 Roland '66 & Freda '66 North  
 Odanah Farms Ltd  
 Order of The Eastern Star Grand  
 Chapter of Manitoba  
 Order of The Royal Purple #138  
 Dr. Doreen M. Pachal '47  
 Shirley J. Paine '08  
 Dr. Alex Pappas '86  
 Parrish & Heimbecker Ltd  
 Patersons  
 Paul's Hauling Ltd  
 Dr. Douglas Peters '50  
 Polish Gymnastic Sokol Association  
 Poplar Point Colony Farms Ltd  
 Harley D. Potter '46  
 Mary H. Prugh  
 PPG Architectural Coatings  
 Marjorie R. Pringle '55  
 Frances E. Racher '89  
 Dr. Douglas Ramsey  
 Reader's Digest Foundation of Canada  
 Red River Valley Mutual  
 Insurance Company  
 Redfern Farm Services  
 Registered Psychiatric Nurses'  
 Foundation Inc  
 Robert F. Richards  
 Robert Richardson Jr. '93  
 Riverbend Colony Charitable Trust  
 Royal Oak Inn  
 Royal Trust Co  
 Margaret Sampson  
 Sheila Samuels  
 Joseph & Patricia Sawchuk  
 Rainer & Sarah Schira  
 Sears Canada Inc  
 Earle Selwood  
 Tanya E. Sharpe '01  
 Shell Canada Limited  
 Joanie & Don '65 Sherritt  
 Bill & Helen Sibbald  
 Silver Winds Colony Ltd  
 Abe Simkin  
 Saul Simkin  
 Sioux Valley Dakota Nation  
 Barton J. Sisk '72  
 Greg & Yvonne Skura  
 Dr. Roger & Ann Smith  
 Alice Smythe  
 Morten Sorenson  
 Dr. Robert & Sharon Springer  
 Springhill Colony Farms Ltd  
 E. June (Cosgrove) Sprott '64  
 Dr. Kam Srikameswaran  
 Star Lite Colony  
 Howard Stewart  
 Jerry T. Storie '72  
 Kimberley D. Sundell '02  
 Joyce R.A. Taylor '71  
 Dr. Marion & William Terry  
 Peter & Marlies Thiessen  
 Garth H. '48 & Iris Thomas  
 Gayle & George Thomas  
 Dr. Douglas Thompson  
**Dr. Demetres P. Tryphonopoulos**  
 UMA Engineering Ltd  
 Uniglobe Clark Travel Inc





Dr. Michael Taylor is inducted into the Member category of the Order of the Sheaf by then-BU Foundation President Dr. Bill Myers (left) and BU President and Vice-Chancellor Dr. David Docherty (right).



From left: Then-BU Foundation President Dr. Bill Myers with BU student scholarship recipients Parker Easter and Ingrid Flett, and BU President and Vice-Chancellor Dr. David Docherty.

United Steelworkers of America  
 Douglas M. Vanbeselaere '83  
 Ruth Vasconcelos '71  
 Vector Construction Ltd  
 Vermillion Colony  
 W. Homburger Limited  
 Jean M. Walsh  
 Yi (Victor) Wang  
 Carol I. Wells  
 Western Management Consultants  
 Western Medical Clinic Medical Corp  
 Westman Aerial Spray (1994) Ltd  
 West-Man Dental Group  
 West-Man Multicultural Council  
 Westman Sport Association  
 Lelonie M. Whitmore '62  
 David Wilkie '82  
 Carol L. Wilkins  
 Howard '40 & Thelma Williams  
 Windy Bay Colony Farms Ltd  
 Winkler Economic Development Corporation  
 Women's Enterprise Centre of Manitoba  
 Dr. Westley '44 & Helen Wong  
 Wyeth-Ayerst Canada Inc  
 Frances Yeomans '19  
 Laura Young  
 Erlin J. Zurawski '09  
 A Generous Person

Air Farce TV10 Inc.  
 Amoco Canada Petroleum Company  
 Brenda L. Anderson '64  
 Dr. Dawn Anderson  
 Doug '89 & Valerie Anderson  
 Frances & Bill Anderson  
 Laurie Anderson  
 Stewart & Doreen Anderson  
 Susan Andison '68  
 Mary Andrusyszyn  
 Anna Resources Ltd  
 Kay '59 & Paul '59 Antrobus  
 AP McKay Investment Inc  
 Apache Canada Ltd  
 Dr. Bernadette Ardelli  
**Claire Arduini**  
 Charles B. Armstrong '75  
 Dr. Helen Armstrong  
 Faye E. Arthurson '65, '78  
 Atom-Jet Industries Ltd  
 Audrey S. Hellyer  
 Charitable Foundation  
 August Insurance Agency Ltd  
**AuthentiGATE / Event Staff Canada**  
 Verna Averill '50  
 AWM Productions Ltd  
 Wilbert Babe '32  
 Bachelor of Nursing, Class of 2016  
 Dr. Beverley Bailey  
 Dennis D. Bailey '79  
 S. Balasubramaniam  
 Barbara '57 & Barry Bannatyne  
 Joseph Barletta  
 Vincent S. Barletta '00  
 Ian '62 & Beverley '60 Barnes  
 Karen F. Barteaux '91  
 Janice R. Barton '64  
**Basketball Manitoba**  
 Clive Bate '54  
 Bruce Bateman '69  
 Murray '65 & Elmira '74 Bateman  
 Baljinder Bath  
 Sukhminder S. Bath '90, '04  
 Irene '69, '76 & Adin Bauman

Doreen Beaupre '88  
 Beaver Bus Lines  
 Dr. Kenneth Beesley  
 Dr. Carl & Linda Belke  
 Dr. George A. Bell '56  
 Robert A. Bell '75  
 Reverend William R. Bell '42  
 Kenneth '65 & Lois Bellas  
 Sally Bender '70  
 Dr. Harjit Benning  
**David H. Bergman '63**  
 Donald L. Berry '64, '71, '73  
 Laurence M. Bertram '69  
 Dr. Kenneth '75 & Josie '79 Bessant  
 Viola F. Best '39  
 Kenneth & Vivianne Bicknell  
 Greg T. Bieber  
 Mansel Binkley & Anna Hunt-Binkley  
 Vic & Mae Binkley  
 Nancy (Henton) Birch '60  
 George J. Birger  
 J. Errol Black '65  
 Bill Black '52  
 Kenneth W. Blair '72  
 James U. Blanchard III  
 Eldon '41 & Jean '41 Bliss  
 Dr. Arthur Blue  
 Body Force Fitness  
 Bogdonov Pao Associates Ltd  
 Brian C. Boggs '76  
 William '78 & Kathy Bolley  
 Maureen Bonar & Claude Pellerin  
 Boretta Construction 2002 Ltd  
 Ronald '62 & Margaret '62 Borotsik  
 Darcy & Dr. Arthur Bower  
 Clifford '39 & Verna Bowes  
 Keven & Dawn Bowie  
 Dr. Anne Bowker  
 Garnet '97 & Wendy Boyd  
 Betty Braaksma  
 Bradley Sand & Gravel Ltd  
 Alicja & Jan '73 Brancewicz  
 Brandon & District Labour Council

Brandon Community Development Corporation  
 Brandon Community Orchestra  
 Brandon Conservatory Chorale  
 Brandon Crocus Lions Club  
 Brandon Downtown Business Improvement Area  
 Brandon Economic Development Board  
 Brandon Film Festival  
 Brandon Hills Veterinary Clinic  
 Brandon Latina Women's Association Inc.  
 Brandon Music Festival  
 Brandon Teachers Hockey Club  
 Brandon University Geography Department  
 Brandon University Physical Education Club  
 Brandon University Psychology Club  
 Brandon University School of Music  
 Lon F. Brandon '69  
 Stewart A. Brandon  
 Dr. Di Brandt  
 Shawn D. Brandt '91  
 Harpreet Singh Brar  
 Christopher Brawn  
 Gary '67 & Angela '67 Brawn  
 Gary T. Brazzell '55  
 Olive Bremner  
 Helen E. Bridgett '23  
 Brightstone Colony Farms Ltd  
**Sonia Brookes**  
 Alfred R. Brooks '59  
 Brossland Investments Inc  
 Doneta & Harry Brotchie  
 Dr. Derek H. Brown  
 Dorothy Brown  
 Dr. John Melville Brown '33  
 Eleanor A. Brownlee '64  
 Brown's Drug Store Limited  
 Barton C. Bruce '51  
 Thomas O. Bryan '74  
 Gregory '93 & Lana '91 Bryant  
 BU Chorale Class of '95

## Member

\$1,000 - \$4,999

A & W Restaurant  
 Abstract Volleyball Ltd  
 Catherine Ackland '38  
 Carolina Acosta-Gonzales  
 Acres International Limited  
 Donald N. Adams '54  
 Dorothea L. Adaskin  
 Donna '61 & Ross Adrian  
 Donna J. Agnew '52  
 Dr. Edward '67 & Joyce Agnew  
 Beverley Agur

- Budget Rent a Car  
Brenda Bull  
Brian Bunch  
Burger King  
**Karl Burke**  
Dr. Hans W. Burmeister  
Gary Burnett  
Busdevelop Corp  
**Dr. Jonathan Bush '05**  
Dr. Al & Maggie Bush  
Clifford S. Butler  
Reverend Monsignor Michael Buyachok  
CA Insurance Plans West  
Drew Caldwell '82  
James L. Callander '58  
Campbell Soup Company Limited  
Brent E. Campbell '89  
Robert D. Campbell '74  
Winnifred Campbell '54  
Canada Post Corporation  
The Canadian College of Teachers  
Canadian Labour Congress  
Canadian Petroleum Tax Society  
Nonny & Carolynn Cancade  
Canfor Corporation  
Dahl & Mary Cannons  
Carberry Music & Arts Festival  
Dr. W.C. & Charlotte Carbno  
Alma E. Carnochan '72  
Glenn R. Carradice '86  
Dr. Leslie '80 & Debra Carrothers  
Dr. Ewen P. Carruthers '37  
Lee Carter  
Christina E. Cassels '65  
Garth Stanley & Joyce Constance  
(Braithwaite) Chalmers  
Henry Champ & Karen DeYoung  
Bill & Sheila Chapman  
Ronald J. Chapman '78  
Carlie Chastko  
Linda J. Chernenkoff '77  
William J. Chester '78  
Dr. David D.K. Chin  
Chinese Community Association  
Nona '61 & Dennis Chlan  
Edna M. Chohan '62  
Dr. Margaret Choy  
Christian Stewardship Services  
Poh Neo Chua '88  
Romain Chubak  
Charlie & Laurel Clark  
Lorna '64 & James Clark  
**Class of '69, 50th Anniversary**  
Clearview Colony Ltd  
Robert A. Clement '30  
Clemmensen's Movies & More  
Greg '71 & Patricia '69 Coates  
Chad '90, '92, '00, '04 & Lisa '89 Cobbe  
Tom Cochrane, Hon. D. Mus. '05  
Vona '73 & Ken Cochrane  
Brad '78 & Lorna '77 Coe  
Jane G. Cole '71  
John '86 Cole & Gisele Poirier  
**Bob '61 & Mary (Pothorin) '61 Coleman**  
Dr. Sherril Colert  
Colonial Inn  
Esther L. Comber '74  
Compass Group Canada  
Lydia '79 & Jacques Comty  
Confederation Life Insurance  
Campbell & Marjorie Connor  
Owen J. Cory '82  
Carolyn Cosgrove Berkan  
Countryside Equipment  
John P. Crabb  
Boyd & Krista Craig  
Mark and Cheryl Cramer  
Edna M. Crane '49  
Credit Union Central of Manitoba  
Daniel '43 & Faith Cristall  
Crocus Girls Volleyball  
Cumming & Dobbie (1986) Ltd  
Beverley '89 & Jack '66 Cumming  
Evelyn R. Currie '59, '81, '88  
Dr. William R. Currie '69  
Paul '66, '70 & Jean '59, '67 Curtiss  
Colleen Cutschall  
D.W. Friesen & Sons Ltd  
Helen A. Dalling  
Florence Dalman  
Lois M. Daly '48  
Kenneth J. Dando '70  
Dr. Bud & Flora Danylchuk  
Clair '64 & Valerie '58 Davies  
Eric Davies  
Willa G. Davies '31  
Davis + Henderson Intercheques  
Margaret L. Davison '50  
Cam '59 & Maili Davreux  
Larry & Barbara Dawson  
De Fehr Foundation Inc  
Philip de Gruyter  
Dr. Adriaan de Hoog '67  
Lorene (Chui) '74 & Lance De Silva  
**Dr. Jillian DeCosse '05**  
Michael B. Decter  
Dr. Walter W. Deller '76  
Carole E. Dence '64  
Frank & Debby '03 Deniset  
Allan Denton  
Gregory Desrosiers & Donna Mark  
Marc & Doreene Desrosiers  
Chanikya N. Desu  
Robert G. Deveson '73, '74  
Dr. Mandeep Singh Dhaliwal,  
A Medical Corporation  
Anne L. Dickson '81  
Rt. Honourable John Diefenbaker  
Les Diehl  
Merv Dillabough  
Shirley M. Dilley '32  
Helene E. Dillon  
DirectCash Management Inc  
Disaster Recovery Information Exchange  
**Phil & Kimberly Dixon**  
Jim Doak '67 & Karen Gusdal '67  
**Dr. David & Kris Docherty**  
Doig's Store Limited  
Dominion Malting Limited  
James '59 & Jill Donaghy  
Lawrence & Brenda Donald  
Sandra G. Donin '60  
Ton Donkersloot  
Rita & Edwin Dornn  
Irma M. Douglas  
Eric S. Dowsett '82  
Chris & Janet Drover  
Dr. Johan & Suzanne du Plooy  
Dr. Henry '82 & Shirley Duckworth  
Dr. Heather Duncan '00  
Anne Dunfield '37  
Al Dunthorne '82  
Kerry DuWors  
Greg '86 & Shawna '88 Dyck  
Dynamic Fund Foundation  
William P. Eames '50  
Ross '69 & Delma Eastley  
Eckler Ltd  
Donald '64 & M. Louise Edwards  
Russ & Edna Edwards  
EECOL Electric (Sask)  
Alan & Barbara Ehnes  
Dr. James Ehnes  
Carla & Derrick Eisler  
Elcano Exploration Inc  
Dr. Alvin & Phyllis Elliott  
Elm River Colony Farms Ltd  
Dr. Clayton '49 & Dorothy Elston  
Engineers Geoscientists Manitoba  
Shawna & Dean English  
Enns Brothers Ltd  
Dr. Robin Enns & Lynne Strahl  
Adelle J. Eslinger '88  
Evancic, Perrault, Robertson  
Brenda, Janet and Randall Evans  
Adelene M. Evans  
Dr. William Evans '59  
Leo Evason '54  
Anne R. Fahrig '47  
Martha E. Fair '62  
David '73 & Inez Fairlie  
Ann Fedorkiw  
Mari-Ann Fedorkiw  
Nelda Fedoruk  
Phyllis M. Ferguson '73  
Sherri & Bryan Ferguson  
Albert Ferris  
Karen E. Fingas '68  
Charlotte M. Finlay '37  
Kristen & Tyson Fisher  
Marjorie Fitton '31  
Olive J. Fleming '48  
Laura & Jason Flikweert  
Dr. Robert & Janice '85 Florida  
Fred T. Foo '48  
Hazel E. & Ann L. Forbes  
Reg E. Forbes  
Forman Honda  
Byron Forsyth  
Donna '97, '04 & Gerald Forsyth  
**Pamela Forsyth '69**  
Tilda '07 & Chris Fortier  
Ronald '74 & Dorine '74 Fowke  
Fowler Hyundai  
Margo F. Foxford '74  
Sherrie '62 & Gordon Francis  
**Ian Fraser**  
William '51 & Frances '57 Fraser  
Freightliner Manitoba Ltd  
**Paul '87, '89 & Sylvia Friesen**  
Dr. Lorraine Frost  
Bryan J. Fuhr '67  
Cory & Melanie Gadsby  
Ralph J. Gardiner '70  
F. Joan Garnett '52  
Patricia A. Gaye '53  
Mark Geekie  
Mike Geletchuk '71  
General Window Products  
of Canada Limited  
Gerdau AmeriSteel  
Kathryn Giesbrecht  
Vern C. Gilbertson  
Dr. Robin & Ruth Giles  
Barbara A. Gill  
Sara A. (Conlin) Gillis '85, '87  
Glenboro Pharmacy Limited  
Clifford L. Glenn '56  
Marcy Goetz  
Albert '54 & Marion Gogol  
Michelle Goldstone  
Good Hope Colony Farms Ltd.  
Margaret C. Goodale '37  
**R. Kent Gooden '69**  
W. Donald Goodfellow '61  
Goodon Industries Ltd  
Dr. Marvin & Mrs. Cheryl Goossen  
Allen K. Gordon '74  
Dan & Tiana Gorman  
Gossan Resources Limited  
Philip D. Gosselin  
Tena I. Gough '49  
Don & Yvonne Graham  
Isabelle J. Graham  
Richard '88 & Shannon '89 Graham  
Dr. Gerald '55 & Freida Graham  
Bonnie (Burkett) Grahame '74  
Grand Valley Mechanical Ltd  
Dr. James Gray '74  
Green Acres Colony  
The Green Spot  
David '74 & Leslie Green  
Doris I. Greenshields '51  
Greenwald Colony  
James E. Gretz '64  
Grey Goose Bus Lines Ltd  
Grey Goose Corporation Ltd  
Lorraine '77 & James Griffiths  
Dr. Scott & Mrs. Sheilagh Grills  
Dr. Agnes Groome '38  
Katie '05 & Glen '94, '04 Gross  
Rhonda Gruetzner  
Dr. Austin & Gloria Gulliver  
Edith R. Gunning '38  
Evelyn R. Gunson '79  
Hugh Guttman Family Trust  
Carolyn D. Gwyer '95, '12  
Scott Haddow  
Myrna '58 & Ferguson Hall  
Hugh '61 & Monique Halliday  
David '61 & Peggy Halstead  
Ian O. Hamberg '59, '68, '70, '93  
Gertrude Hamilton  
Gladys A. Hamilton '41  
Peter D. Hamlyn  
Hams Marketing Services  
David C. Hanly '81  
Margaret Hannah '65





Novell Thomas, on behalf of he and his wife, Annelisa Dey Thomas, is inducted into the Clark Hall Guild category of the Order of the Sheaf by then-BU Foundation President Dr. Bill Myers (left) and BU President and Vice-Chancellor Dr. David Docherty (right).



Staff at Nonsuch Brewing Co., including head brewer and BU alumnus Mark Borowski (second from left), present Brandon University with a portion of the proceeds from the sale of a custom-crafted ale brewed especially for BU's 50 anniversary celebrations. The presentation was made at a special alumni event held at the brewery in Winnipeg.

Jeffrey '79 & Christa '99 Harder  
 Beverley & Robert Harris  
 Carla Harris '03  
 Dr. Jennifer Harrison '85  
 Murray '70, '71 & Linda (Petrie) '70 Hart  
 Dale '76 & Benji Harvey  
 Dahl '53 & Dorian Harvey  
 Jeffrey W. Harwood '73  
 Phyllis Hatch  
 Haven Colony  
 Dr. Donald & Pat Hayward  
 Norman Hedison '54  
**Ryan B. Hehn '97**  
 Angela Heise  
 Reg '82, '84 & Aynsley '80 Helwer  
 Eric '78 & Michele '76 Hemmerling  
 W.B. Henderson  
**William J. Henderson '68**  
 Carol A. Hendrickson  
 Peter '49 & Jean Hendry  
 Dr. Richard Henley  
 Donald R. Henry  
 Evelyn B. Herman  
 Barry '60 & Ellen Heselgrave  
 P. Heuchert  
 William Heuchert '07  
 Howard Hewgill & Allison Sawyer  
 Wendell Hewitt-White '36  
 Hewlett-Packard (Canada) Co  
 Reg & Heather Hickmott  
 James & Deborah Hickson  
 Gwen Hiller '45  
 Eric '63 & Barbara Hillman  
 Donald and Diana Hodgson Foundation  
 Daniel Holm & Darene Yavorsky  
 Dennis V. Holmlund '62  
 Hometown Enterprises Inc  
 Homewood Colony Farms Ltd  
 Laurie & Kevin Hooke  
 Barb Howard  
 Jason Howden '01

Myles '91 & Bonnie Hubbard  
 Walter Huculak '55  
 Catherine & Ray Huene  
 Alma Hughes  
 Dr. Michele Hultzer  
 Francis J. Humphries '48  
 Humpty's Restaurant  
 Dennis A. Hunt  
 Hunt Miller & Co  
 Dr. Fiona Hunter  
 Don '78, '88 & Jacqueline '78 Hurton  
 Hutterville Colony  
 Carole (Grant) Hyndman '84, '87  
 Dr. Pat Illott '77  
 Independant Order of Foresters  
 Industrial Alliance Financial Group  
 I-NetLink Incorporated  
 Esther A. Inglis  
 Yvonne Ingram  
**Yvonne C. M. Inniss '87**  
 Intercanada Communications  
 International Association of Fire  
 Fighters Local 803  
 International Orthopaedic  
 Consultants Inc  
 Inventronics Limited  
 IODE Provincial Chapter  
 John B. Irvine '69  
 Jean L. Jack '94  
 Dr. D. Garth Jackson '77  
 Derek Jago  
 Joan Parker Realty  
 Dr. Martin W. Johns '72  
 Dr. Allan Johnson '56 &  
 Joanne DiCosimo  
 B.L. Johnson  
 Stuart T. Johnson '66, '69  
 Cheryl '67 & Brian Johnston  
 Wayne '62, '63 &  
 Margaret '61, '62 Johnston  
 Gay E. Jones  
 Helen E. Jones

Neal Jordan  
 Colleen '74 & William Jury  
 Kanaris Enterprises Limited  
 Gerald Kanary  
 M. Kathleen Kano  
 Stephanie Karpan  
 Catherine Kay '64  
 Carmen Kazakoff-Lane &  
 Andrew C. Lane '88  
 Brian '80 & Dee Keating  
 Patrick '57 & Joan Kelleher  
 Christopher W. Kennedy '76  
 J.E. & Virginia Kennedy  
 Marshall Kennedy '63 &  
 Donna Zimmerman-Kennedy '66  
 William A. Key '73  
 Keystone Colony  
 Dr. K. Glen & Evelyn '64 Kidd  
 The Killarney Foundation Inc  
 Don & Becki Kille  
 Mona '73 & Ron Kille  
 Dr. Michael & Dr. Kyung Kim  
 Dr. & Mrs. G.F. Kindle  
 Edna King  
 Kingdom Beauty Supplies Inc  
**Kenneth '11 & Raeleta '88 Kingdon**  
 Norma Kingham  
 Kirkup Plumbing & Heating  
 David & Carly Kirkup  
 Anita & P. Donald Kirkwood  
 Henry '66 & Judith Klassen  
 Vicki & Jack Klassen  
 Phillip '33 & Eulala Klenman  
 Dr. Norman & Amanda '85 Klippenstein  
 Edna H. Knock '76  
 David S. Knowles  
 Velma Ko '70  
 Kodaly in Manitoba  
 Andy '58 & Berthe Kossak  
 Yasmin Kossak  
 Yolanta Kossak  
 Dr. Reinhold & Rita Kramer

Marion Kreshewski '58  
 Kuipers Family Bakery  
 Marie I.E. Kullberg-Brown '68  
 Jean Kustra '65, '79  
**La Brasserie Nonsuch Brewing Co. Ltd.**  
 John '37 & Verna M. Labelle  
 Laidlaw Transit Ltd  
 Margaret E. Lair  
 Dorothy Lake  
 Lakeside Colony Ltd  
 Dale M. Lakevold '91  
 Marina '56 & James Laking  
 Alexandra V. Lapko '75  
 Dr. Gregory & Myrna Large  
 Greg '79 & Kathleen '77 Lawson  
 Marjorie (Claeys) Leach '63  
 Cynthia J. Ledgley  
 The Lee Foundation  
 Della & Gilbert Lee  
 David & Arlene Leech  
 Marion H. Lepkin '44  
 Troy Leslie  
 Michael Levy  
 David '90, '92 & Cindy Lewis  
 Dr. James G. Lindsay '46  
 Beverley J. & R. Fletcher Linklater  
 Helen M. Lisoweski '80  
 Louise Loots & David Hopkins  
 Pablo Loyer '14  
 Dr. Andrew & Margaret Luer  
 Jerry & Carole Lupkowski  
 M.C.M. Architects Inc  
 M.P.M Insurance Agency Ltd  
 Mable Brandon Memorial Committee  
 Bruce '69, '71 &  
 Patricia '69, '89 Macdonald  
 James D. MacDonald  
 Karen MacDonald  
 Kevin D. MacDonald '77  
 Mary M. MacDonald '25  
 Donald R. MacKay '39  
 Joan MacKay '73, '85, '87

Rod & Pat '71, '87 MacLennan  
 John MacLeod  
 Leslie Macleod  
 Grace Magnacca  
 Jennifer K. Malmstrom '92  
 Manitoba Bar Association  
 Manitoba Chamber Orchestra  
 Manitoba Conservation  
 Districts Association  
 Manitoba Developmental Centre  
 Manitoba Hazardous Waste  
 Management Corp  
 Manitoba Hockey Foundation Inc  
 Manitoba Music Educators' Association  
 Brandon Branch  
 Manitoba NetSet Ltd  
 Manitoba Pulse Growers Association  
 Manitoba Registered Music Teachers  
 Association (Winnipeg)  
 Helen M. Mann '28  
 Ramjit Singh Mann  
 Dr. Brian '68 & Lynne Manns  
 Mano's Restaurant & Lounge  
 John & Wilma Mantell  
 Maple Grove Colony  
 Marlin Travel Service  
 Eva Marshall  
 Dr. Henry H. Marshall '74  
 John W. Marshall '69, '73  
 Richard S. Marshall '74  
 Barbara '65 & Doug Martin  
 Gary C. Martin '59  
 Judith E. Marvin '95  
 Megumi Masaki-Hechler &  
 Peter Hechler  
 Masonic Lodge Scottish Rite  
 Freemasonry  
 Dr. T.K. Mathew  
 Anne '78 & Jerry '74 Matiation  
 Jack '68 & Wreatha '70 Maw  
 Brian Mayes & Dr. Alison Marshall  
 Geraldine Mayes  
 Patricia E. Mazer '79  
 Dr. James '67 & Cathy McAllister  
 John D. McArthur '57  
 Nola M. McBurney '63  
 Dr. Wendy '94 & Doug McCallum  
 Dr. Robert '71 & Marjorie '71 McCamis  
 Daryle & Jane '01 McCannell  
 McClure-Van Achte Limited  
 Rhonda McCorriston  
 Mark A. McCowan '64  
 Larry '63, '68, '71 & Audrey '68 McCrady  
 Devin & Alli McDonald  
 Dr. Robert Arthur McDonald '65  
 Laura McDougald-Williams '00 &  
 Dustin Williams  
 Dorothy F. McDowell '33  
 David '57, '65 & Linda '59, '68 McDowell  
 Donald McFadden  
 Tim McFadden  
 Livia '73 & Charles McGregor  
 Dr. Sumathi '84 & Jeffrey McGregor  
 Garry R. McIntosh  
 Jean McIntosh '56  
 Maureen E. McIntyre '72  
 The Honorable W. John McKeag  
 Neil '52 & Irene McKellar  
 Brian J. McKenzie '61

Irene McKenzie '34  
 Dr. Charles '52 & Dianne '53 McKinnon  
 Frank '55 & Pat McKinnon  
 John & Eileen '70 McLachlan  
 Clive & Donna McLennan  
 Barrie T. McLeod '55  
 Murray J. McLeod '64  
 Garfield W. McMahan '52  
 Charles A. McMillan '66  
 James McNeely '85  
 Janie McNish  
 Bradley '03 & Amber McNiven  
 Dr. Murray McPherson '43  
 Hugh McRuer '62  
 Dr. Ed '37 & Mrs. Mary '38 McTavish  
 Dr. Merilyn L. McTavish '66  
 A.C. McWilliams  
 Jack C. Medd '52, '56  
 Charles '61 & Joan Meighen  
 George Melnyk  
 James W. Mendenhall  
 Wendelyn M. Menzies '99  
 Katherine & William Metelski  
 Dr. Roberta '74 & Barry '76 Midwinter  
 Millbrook Hutterian Brethren, Inc  
 A.B. Miller '64  
 Craig & Joan Miller  
 Edna Miller  
 Malcolm & Myrna '72 Miller-Tait  
 Brent '71 & Renatta '76 Mills  
 Earl T. Mills '37  
 Dr. Isabelle Mills '64  
 James G. Mills '64  
 Millshof Colony Farms Ltd  
 Carol M. Milne '71  
 Albert Edward Milton  
 F.C.D. Milton  
 Barry Minish '70  
 Meta E. Mischpeter '28  
 Helen '55 & Kenneth Mitchell  
 Terence & Colleen Mitchell  
 Thomas '70 & Bonnie Mitchell  
 Mitrou Agencies Limited  
 Morlene Mogan '65, '98  
 Eldon M. Montgomery '63  
 George & Maxine Moore  
 Grace E. Moore '33  
 Sharon Moore '71 & Robert Essery  
 Shirley '61, '91 & Wayne Moore  
 Morguard Real Estate Investment Trust  
 Elizabeth Morrison  
 J. Kenneth Morrison '51  
 Dr. Morris & Raymonde Mott  
 Kyle A. Muirhead '07  
 Brad Munn & Cyndi Adams-Munn  
 Dr. John Murdoch '80 &  
 Sharon Davis-Murdoch  
 Murray Chevrolet-Cadillac  
 Florence Murray  
 Herbert '59 & Arlene Murray  
**J. Mustard '99**  
 Charles V. Myers '32  
 Kristen A. Myers '04  
 Kelvin '85 & Layna Nachtigall  
 Gordon Neal  
 Nancy Neil-Noonan '82  
 Maria C. Nelson '25

Dr. James Nelson '42  
 Netley Colony Ltd  
 Kevin J. Neufeld '83  
 New System Store Ltd  
 New York Life Insurance Co  
 Murray D. Nichol '92  
 Arnold J. Nicholls '64  
 Harold & Ella Nightingale  
 Dr. Laurence F. Nixon  
 Sheila L. Nixon '35  
 Dr. Charles & Sandra Norman  
 Mike & Allison Noto  
**John F. Nowitski '74**  
 Reg '69 & Sharon '69 Nylen  
 Oak Bluff Colony  
 Oak River Colony  
 Philip P. '89 & Michelle O'Brien-Moran  
 Cody E. Obst '01  
 Brian E. O'Donnell '69  
 Paul O'Driscoll '79  
 Tom & Pat O'Flanagan  
 Ingemar Ohlsson  
 Phyllis E. Ohs  
 O'Kelley's Restaurant  
 W. A. Olson '69  
 David On  
 Operating Engineers  
 of Manitoba Local 987  
 Dr. David Opper '76  
 Julia Maude Orchard  
 David W. Organ '49  
 Orla's Watch & Clock Shop  
 Helen E. Orr '72  
 Barrie Orr '57  
 Mary E. Osborne '78  
 The Oshawa Group Limited  
 Reta C. Owens '74  
 P.E.O. Sisterhood Chapter R  
 Palmer Badger & Co  
 PanCanadian Petroleum Limited  
 Dr. Clare Pangman '63  
 Pao Holdings Ltd  
 Robert '78 & Angela '84 Pappas  
 Dr. Jim '64 & Theresa Parrott and  
 Arleen McLean  
 Morna Paterson '67  
 Patill Insurance Agencies Ltd  
 Patmore Nursery Sales  
 Jean E. Paton '53  
 Lonnie Patterson '03, '09  
 George W. Peary '61  
 Olive G. Pease '34  
 Sydney Pechet '30  
 Douglas '79 & Catherine '81 Pedden  
 Betty M. Pelouquin '97  
 Anna M. Penno '05  
 Ken Penton '68  
 Dr. Evan H. Pepper  
 Dale V. Peters  
**Dr. David Peters**  
 Nathan '06 & Tyne Peto  
 Lee A. Pettigrew  
 Dr. Brian Phillips '67  
 Lisa R. Philpott '80  
 Pik-A-Dilly RV Centre  
 Pizza Express  
 Pizza Hut  
 Margaret & Robert Plaxton

David Playfair  
**Dawn Popescu**  
 John W. Popkin '29  
 Douglas W. Pople '90  
 PPG Canada Incorporated (Brandon)  
 PPG Industries Inc  
**Prairie Spirit School Division**  
 Morris Predinchuck  
 Peter Prokaska '53  
**Prospectors & Developers  
 Association of Canada**  
 Beth Proven  
 Mary-Ella Proven '76, '78  
 Dr. Robert & Lorraine Prus  
 Public Service Alliance Canada  
 William & Brenda Pugh '70  
 John D. Purvis '53  
 Alberta L. Pybus '33  
 Radics Chrysler Plymouth Jeep  
 Perri Gardner '86 & Garry Rainnie '78  
 Mary E. Rand '32  
 Dr. Nasib Randhawa  
 Corrie & Gordon '94 Ransom  
 RBC Dominion Securities Foundation  
 Ready Oxygen Ltd  
 Red River Equipment Inc  
 Ralph Redfern  
 David '92 & Wladyslawa Rehaluk  
 Reid Financial Ltd  
 Amelia S. Reid '75, '95  
 Larry Reid  
 Marianne Reid  
 Dr. Gordon Reimer  
 Revelstoke Companies Ltd  
 Richard Flohil & Associates  
 Lynn Richard '75  
 Laurie '65 & Treva '65 Ricou  
 Ridgeville Colony Farms Ltd  
 Lewis A. Riley  
 Riverdale Colony  
 Dr. Leonard F. Rivers '63  
 Margaret M. Roberts '41  
 Ian & Dorothy Robertson  
 Noella & Fern Robidoux  
 Sid Robinovitch  
 Renee Robinson '91 & Gordon Chester  
 Marion (Eamer) Robinsong '61, '70  
 Clarke Robson  
 Dr. M. Susan Roddy  
 Rogers Shared Services  
 Mervyn Rollins  
 Dr. Lewis C. Rose  
 Janice '66, Jodie '90 & Ian '92 Ross  
 Dr. Linda L. Ross  
 Rotary Club Westman Foundation  
 Dr. Richard C. Rounds  
 Diane & David Rourke  
 Dr. Don Rousell '52  
 Roy Johnston & Co  
 Margaret I. Roy '62  
 Royal Canadian Legion  
 Dominion Command  
 Royal Canadian Legion Manitoba &  
 Northwestern Ont  
 Royal Canadian Legion No. 23  
 Royal Lepage Charitable Foundation  
 Royal Trust Co. of Canada  
 Jesse Roziere



Norma Roziere  
 Algot I. Runeman '21  
 Hugh Russell '95  
 John W. Russell '66, '69  
 Rev. Laird Russell-Yearwood  
 J. Elaine Rust '58  
 Dr. Len '85 & Brenda '85 Rust  
 Marian E. Rutt '49  
 Alixe A. Ryles '42  
 S.H. Properties Ltd  
 S.P.E.B.Q.S.A. Inc  
 Troy H. Sambrook '92  
 Hillary S. Sametz '08  
 Samson Engineering Inc  
 T. John E. Sandborn '74  
 Saputo Inc  
 Saskatchewan Music Educators  
 Association  
 Blaine '92, '94 & Kimberley '94 Sautner  
 Agostino A. Scaletta '86  
 Dr. Benjamin Schachter '34  
 Dr. Daphne '91 & Grant Schmidt  
 Schneider-Electric  
 Scotia Optical  
 Dr. Sheila J. Scott  
 Gordon B. Sefton '52, '56  
 Mark Sefton '77, '87 & Jean Deong '75  
 Dorothy E. Semple '49  
 Doug Sexsmith  
 Ravishankar Sharma '84  
 The Victor Sharpe Family  
 Dr. Paul H. Sharpe '75 &  
 Helen MacGregor  
 Bruce Shavers & Dianna Morris  
 Shelter Canadian Properties Ltd  
 Norma M. Shepherd '56  
 Sherritt Gordon Mines Ltd  
 Shoal Lake Veterinary Clinic -  
 Dr. Janice & Dr. Bruce Waddell  
 David K. Shuttleworth  
 Allan & Judy Kehler Siebert  
 Dr. Harold Silverman  
 Claribel Simkin  
 Pamela Simmons  
 Richard '96 & Isobel '88 Simons  
 Leonard Sitter '70  
 Al Sivertson  
 Hazel D.E. Skinner  
 Dr. James M. Skinner  
 Karen Skinner '87  
 Dr. Thomas '78 & Jane Skinner  
 Dr. Sheri-Lynn Skwarchuk  
 Doreen '51 & Dr. Lawrence Smillie  
 Agnes E. Smith '71  
 Barbara M. Smith '86  
 Elaine M. Smith '59  
 Dr. Guy '74 & Eileen '76 Smith  
 Dr. Murray & Sally Smith  
 Smooth Movers  
 Allen '67 & Myrna '68 Snart  
 Catherine Velma Snitka '84  
 Sabina Sormova '99, '02  
 Michael Spack  
 Dr. Edward Speers '43  
 Springfield Colony  
 St. Augustine of Canterbury  
 Roman Catholic Church  
 Dr. Christoph Stadel  
 Standard Life



BU Foundation board members at the BU Foundation Annual General Meeting 2019.

David Staples '79 &  
 Merrideth Ashcroft '81  
 Starland Hutterian Brethren, Inc  
 Danuta & Krzystok Stasia  
 Gordon M. Steene '71  
 Douglas G. Steeves  
 Agnes M. Stephenson '50, '56, '61  
 Fern & Fred Stevens  
 Wesley Stevens  
 Roma M. Stevenson  
 Harold '56 & Elizabeth '76, '81 Stewart  
 Heather M. Stewart '58  
 Scott K. Stewart '85  
 E.W. Stinson '48  
 Dr. Kathryn Stitt '84  
 David W. Stone  
 John '70 Stonehouse & Tonia '72 Rushall  
 William Stordy '22  
 Christina (Molberg) Storey '33  
 Iris E. Storie  
 Dr. Douglas Stoski '86  
 C. Stuart & Joyce Stovel  
 George J. Strang '55  
 Reverend George W. Strong  
 Larry '86 & Candis '86 Strong  
 James K. Struthers '53  
 Donald & Betty Sumner  
 William A. Sutherland '51  
 Christine & Wesley Szabo  
 T.A.W.L. Group Winnipeg Inc.  
 Elizabeth Tan '87  
 David C. Taylor '74  
 Garth R. Taylor '43  
 Marjorie Taylor  
 Dr. Michael Taylor  
 Jack Tennant  
 Chester S. Tesarowski '59  
 David '79 & Dawn '81 Tesarowski  
 Heather '01, '03 & Mario Therrien  
 Doreen Thomas  
 June '68, '73 & Lorne Thompson  
 Ross & Jacqueline Thompson  
 Patricia C. Thorn '64  
 Thunderbird H.B., Inc  
 Barbara & Marvin Tiller  
 Eleanor '64 & Bob Tilton  
 Dorothy C. Tinline '42  
 Gerry Titus '68  
 Husein Tjahjadi  
 Albert R. Tolton

Helen A. Toms '35  
 Toronto Blues Society  
 Mary Jane & Paul Torrie  
 Bradley & Patricia Toth  
 Dr. Thomas Tran '99  
 Fred Trapp  
 Iris Tressel  
 John '77 & Sharon '79 Tropin  
 Dan Trotter '80  
 Claren Turner  
 Robert Turner  
 Ryan '94 & Stacie Turner  
 Two Farm Kids  
 Bryan Tyerman '72, '74  
 Dr. Earl '46 & Margaret Tyler  
 Howard '25 & Alma Umphrey  
 University of Winnipeg  
 Valley View Colony Farms Ltd  
 Anthony J. Van Berkel '76  
 Russell & Mavis Van Buskirk  
 Wenonah & Ted van Heyst  
 Varsity Eye Centre  
 Ross '31 & Dorothy Vasey  
 Veer Janitorial Service  
 Via Rail Canada Incorporated  
 Victoria Esso  
 Haroldur V. Vidal  
 Virden Area Foundation Inc  
 Donna '60, '76 & Bob Vrooman  
 Bruce '81 & Christelle Waldie  
 Jeanette L. Walker  
 Dr. Norma Walmsley '88  
 Velma M. Wankling '50  
 Catherine A. Wark '75  
 Kathy Warrington  
 Wash 'n Wrench  
**Ian '67 & Leslie Watson**  
 Margaret E. Watt '45  
 We Care Home Health Services  
 Edna I. Wells '85  
 John '71, '82 & Kathy '67, '77 Welsh  
 Maxine Wenger  
 West Coast Granite Manufacturing Inc  
 Westburne Plumbing & Waterworks Inc  
 Paul S. Westdal  
 Western Cheque Printers  
 Western Financial Group  
 Western Manitoba Philharmonic Choir  
 David Westfall  
 Westman Chinese Association Inc

Westman Scottish Association  
 WGI Westman Group Incorporated  
 Wheat City Concrete Products  
 James '70 & Bette Wheeler  
 Frances M. Whidden  
 David W. Whistle '90  
 Whiteshell Colony Farms Ltd  
 Whitfield Drugs  
 Averill M. Whitfield '61  
 Dr. Laurelyn Whitt  
 Lisa & Ryan Whyte  
 Marlene E. Wiens '82  
 Winnifred Wightman  
 Dr. Clarke & Carol '74 Wilkie  
 Margaret L. Wilkie '70  
 The Honourable Judge Robert J.  
 Wilkins '65 & Judy Bachmann  
 Dr. C. Renee Will  
 Dr. Gordon '55 & Renate Williams  
 Romona U. Williams  
 James A. Williamson  
 George '57 & Marlene '56 Willis  
 Dr. & Mrs. Charles P. Wilson  
 David C. Wilson '59  
 Horace P. Wilson '31  
 Russell Wilson  
 The Winnipeg Grenadiers  
 Winnipeg Jets Booster Club Inc  
 Dr. Dion Wiseman '91  
 Doreen Wolfe '79  
 E. Wolverton  
 Siu K. Wong '86  
 Dr. Westley D. Wong  
 Iva Jane (Delamater) Wood '44  
 Warren Wotton  
 Dr. Janet Wright  
 Ida M. Wyllie '50  
 Lin Xu  
 John '69 & Erna Yeboah  
 H. Newton Yeomans  
 York Tire (1988) Ltd  
 Margaret A.M. Yorke '68  
 Dr. Harvey '55 & Ginger '79 Young  
 Drs. Margaret & Scott Young '86  
 Dr. Wo '72 & Naomi '72 Yuen  
 Ed & Pam Zalusky  
 Zeke's Quality Jewellers Ltd  
 Zenith Paving Limited  
 Dr. Domingo Zuniga  
 A Generous Person (18)

# Brandon University Office of Advancement and External Relations

The Office of Advancement and External Relations serves Brandon University, the Brandon University Alumni Association and the Brandon University Foundation in the pursuit of their respective missions.

The Advancement office acts as liaison between the institution and alumni, donors, volunteers and community partners to promote the advancement of Brandon University.

Craig Cesmystruk – Web Content Editor

Paige Cuvelier – Development Officer

Carla Eisler – Director, Advancement & Alumni Affairs

Shawna English – Development Officer

Grant Hamilton – Director, Marketing & Communications

Rob Henderson – Marketing Communications Officer

Robyn Long – Stewardship &  
Information Management Administrator

Hillary Miller – Office Assistant

Greg Misener – Web Designer

All dollar amounts and financial information in this report are as at December 31, 2019 unless otherwise specified.

## **Brandon University Foundation**

270 - 18th Street, Brandon, Manitoba, R7A 6A9

Phone: 204.727.7374 Toll Free: 1.877.282.4483 Fax: 204.727.4674

[Advancement@BrandonU.ca](mailto:Advancement@BrandonU.ca)

[Alumni@BrandonU.ca](mailto:Alumni@BrandonU.ca)

BrandonU.ca



**BRANDON  
UNIVERSITY**