



**BRANDON  
UNIVERSITY**

Founded 1899

*Brandon University Foundation*  
**Annual Report 2007**



## Contents

Greetings from Brandon University President Dr. Louis P. Visentin	page three
Greetings from BU Foundation President Dr. Jeff Bales	page three
Statement of Financial Position	page four
BU Foundation News & Highlights	page six
Standing Ovation Campaign	page eight
Brandon University Healthy Living Centre	page ten
Brandon University Foundation Presidents' Circle	page twelve
Annual Fund 2007	page fourteen
2007 Annual Fund Donors	page fifteen
Legacy Giving	page sixteen
The Order of the Sheaf	page seventeen
Endowments	page twenty-three



The Brandon University Foundation Annual Report 2007 was compiled and edited by Lisa Thomson, Campaign Assistant, Brandon University. All dollar amounts and financial information in this report are as at May 21, 2008 unless otherwise specified.





## Greetings from Brandon University's President

To all the donors who contributed to the *BU & YOU* Campaign, I send you my very best wishes and gratitude. We surpassed our \$8 million goal by a healthy margin and the entire University community is benefiting because of it.

Great things are happening across campus right now in all the faculties. In particular, we are in the midst of the *Standing Ovation* Campaign and by all reports we should be nearing our goals soon after this report is published. I can assure you that the School of Music will use your contributions well. To date the *Standing Ovation* Campaign has raised over half a million dollars, including the following:

- \$91,000 in seat sales in the Lorne Watson Recital Hall
- Over \$15,000 from music faculty
- \$30,060 from music alumni.

Look for many new enhancements to the School of Music in the fall of 2008 including the addition of Jazz Pianist Michael Cain to the faculty. In brief, things look positive and promising on all sides of the academic equation.

The Foundation has certainly been instrumental in the enrichment of the University. I thank all of the team for their hard work. Go Bobcats!

Dr. Louis P. Visentin,  
Brandon University President & Vice-Chancellor



## Greetings from the Brandon University Foundation President

Greetings donors, alumni, faculty, staff and students. As President of the Brandon University Foundation, I am pleased to inform you that the past year has brought much success to the University. Thank you everyone!

The School of Music's *Standing Ovation* Campaign is going very well, with \$504,008 raised to date. As you read this report, you will learn of all the wonderful things happening at the School of Music thanks to the Campaign, including significant renovations to the Students' Lounge, the purchase of new instruments, improvements to the Jazz Studies program and

the success of the Lorne Watson Recital Hall Seat Sale, to name just a few. You will also read about our progress on a new Healthy Living Centre at BU, which has been an exciting project so far and will certainly be a world-class facility.

Our regular programs: the Presidents' Circle, Annual Fund and Legacy Giving continue to be successful. This year's Presidents' Circle event, A Broadway Christmas, was nothing short of spectacular. Artists from the School of Music treated us to several musical performances and we had the chance to visit and exchange news about the University. The Annual Fund has had another successful year, with generous donations from our alumni totaling over \$70,000. This past year was also one of our biggest ever for Legacy Giving at BU. Many thoughtful donors informed us of their plans to assist Brandon University through a gift in the future.

The Foundation has spent much of the past year hard at work on the business of planning and evaluation. To this end, we have updated the Foundation Handbook, which describes the organizational structure, roles and responsibilities of the Foundation and its committees. We hope to utilize the handbook over the coming years as we recruit new members to join the Foundation. If you would like more information about the Brandon University Foundation or would like to assist the Foundation, please contact the Department of Institutional Advancement at Brandon University. We look forward to speaking with you.

Dr. Jeff Bales  
President, Brandon University Foundation

## Brandon University Foundation

The Brandon University Foundation was incorporated in 1980 with a mission to promote the advancement of higher education at Brandon University and to improve the quality of its facilities and activities. Since then, the Foundation has helped to raise and continues to steward over \$30 million.

Dr. Jeff Bales, President  
Mr. Doug Adams, Past-President  
Mr. Shawn De Delley, Treasurer  
Vacant, Vice-President

Mr. John Blackwood	Mr. Garry T. Miller
Ms Pat Britton	Mr. Edward Mazer
Dr. James Brown	Mr. Stephen Montague
Dr. Glen Carruthers	Mr. Brian Pallister, MP
Ms Katie Decter	Mr. Tom Rice
Mr. Jagdish Malik	Mr. Ernie Shaw

### Ex-Officio

Dr. Louis P. Visentin, BU President and Vice-Chancellor  
Mr. Scott Lamont, BU Vice-President, Administration & Finance  
Ms Cindy Yacyshen, Acting Director, Institutional Advancement  
His Worship, Mayor Dave Burgess (or designate)



# BRANDON UNIVERSITY FOUNDATION

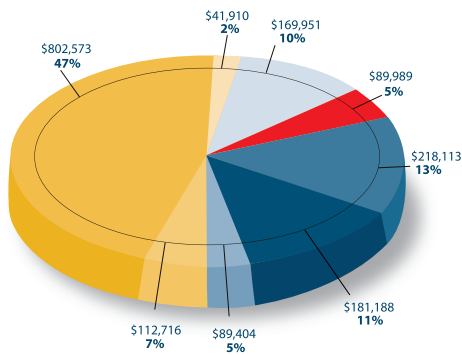
## Statement of Financial Position As at December 31, 2007

<b>Assets</b>	<b>2007</b>	<b>2006</b>
Current Assets	\$462,423	\$392,229
Investments	34,866,228	34,949,916
<b>Total Assets</b>	<b><u>\$35,328,651</u></b>	<b><u>\$35,342,145</u></b>
<b>Liabilities and Net Assets</b>		
Current Liabilities	\$1,215,938	\$1,523,664
Deferred Contributions	6,697,881	7,386,303
Net Assets		
Unrestricted and Internally Restricted Funds	229,700	385,328
Endowment Funds	27,185,132	26,046,850
<b>Total Liabilities and Net Assets</b>	<b><u>\$35,328,651</u></b>	<b><u>\$35,342,145</u></b>

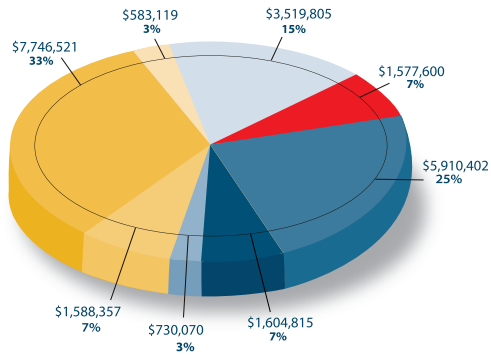
### SELECTED FINANCIAL INFORMATION

Donations to Endowment Funds	\$378,968	\$397,864
Campaign and Restricted Donations	1,283,368	581,340
Unrestricted Donations	6,738	14,798
<b>Total Donations</b>	<b><u>\$1,669,074</u></b>	<b><u>\$994,002</u></b>
Gifts in Kind	59,316	114,989
Other Contributions	716,660	459,156
<b>Total Donations and Contributions</b>	<b><u>\$2,445,050</u></b>	<b><u>\$1,568,147</u></b>
<b>Grants, Scholarships &amp; Bursaries to Brandon University</b>	<b>\$1,705,844</b>	<b>\$1,878,404</b>

**Disbursements to BU in 2007: \$1,705,844**

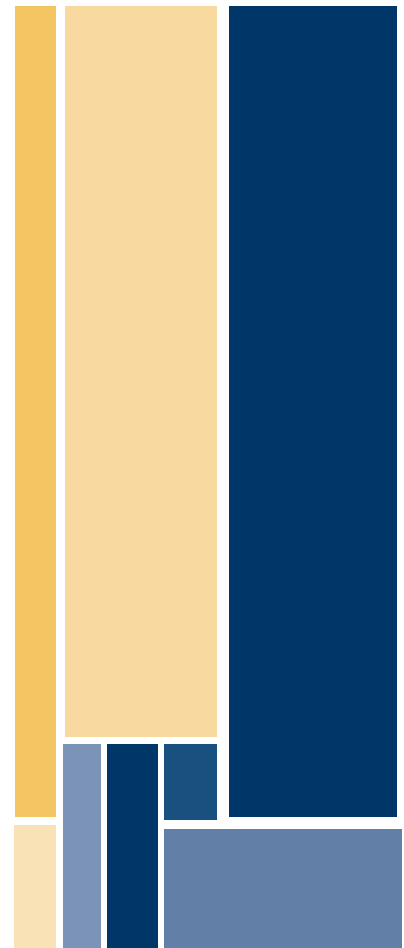
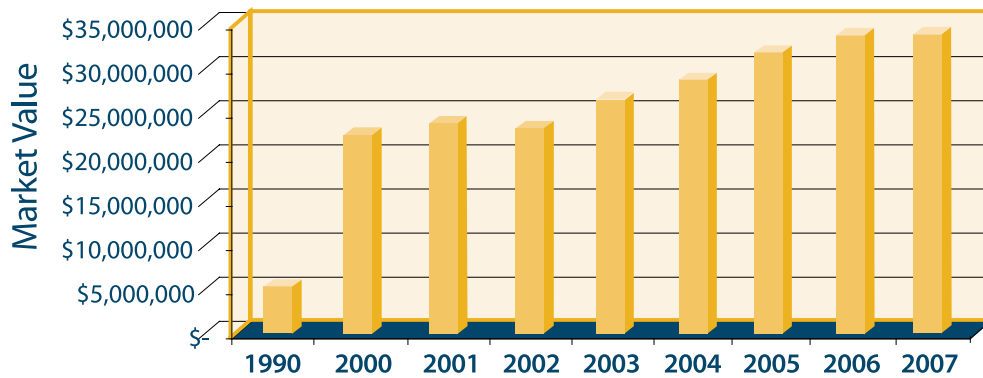


**Disbursements to BU Since 1980: \$23,260,689**



- Academic Initiatives
- Academic Support
- Buildings and Equipment
- Institutional Advancement and Alumni Relations
- Library Resources
- Research
- Scholarships and Bursaries
- Other Initiatives

**Net Assets Held by the Brandon University Foundation**



# Brandon University Foundation News and Highlights

## A generous donation of \$100,000 from TD Canada Trust will allow Brandon University to renovate its Greenhouse facility on campus.

This renovation, along with the previously added new growth chambers funded through the *BU & YOU* Campaign will give the University functional space to facilitate teaching, learning and research activities in such areas as biology and environmental science. The support from our partners at TD Canada Trust will also help to better protect specimens from the extreme temperature shifts of Manitoba's climate.

## Government of Canada funding for Brandon University project helps bridge gap between research and industry

Western Economic Diversification Canada is contributing \$338,500 towards the establishment of an Analytical Scanning Electron Microscope Facility at Brandon University. The facility will give students and researchers access to new technologies and increased commercialization opportunities.

"The Government of Canada recognizes the importance of basic and applied research in science and technology," says Merv Tweed, Member of Parliament for Brandon-Souris. "This funding will enable researchers, innovators, and businesses to improve Manitoba's productivity performance, create high-quality jobs and build stronger communities."

The new facility will be located in the J. R. Brodie Science Centre on the BU campus. It will include an analytical scanning electron microscope (a major priority in the *BU & YOU* Campaign), related user training and support equipment which will be used to educate and train undergraduate students and industry participants.

"The acquisition of this scanning electron microscope will be a fantastic research and teaching tool for our geology and environment programs," says Dr. Louis Visentin, President and Vice-Chancellor of Brandon University. "As well it will be a welcome and powerful tool for mining and petroleum exploration in western Manitoba. As such, our regional and provincial industry collaborators will be well served, as it is the only such instrument in Manitoba. Work normally done outside the province will be done right here in Brandon. It will be a valuable and progressive public-private partnership."

"This new research and teaching instrument will serve as a focal point within the Faculty of Science for the development of links between industry and the University," says Dr. Austin Gulliver, Dean of Science at Brandon University. "It will allow us to train a generation of students in the skills needed in today's technological society."

CGA Manitoba representatives enjoy the grand opening > of the CGA Conference Centre at Brandon University.

## CGA Conference Centre Opens at Brandon University

Brandon University opened the CGA Conference Centre at the beginning of the fall 2007 term thanks to a \$60,000 gift from the Certified General Accountants of Manitoba.

"The Certified General Accountants Association of Manitoba is very proud to support Brandon University's excellence in research and education. BU's success in graduating leaders who ensure a vibrant and prosperous future for the communities they serve is consistent with CGA Manitoba's commitment to serving the public's best interests," said Grant B. Christensen, Director of Education at CGA Manitoba.

The generosity of CGA Manitoba has significantly enhanced the learning and teaching capacity of Brandon University's Business Administration department. The CGA Conference Centre at Brandon University has provided the resources required to facilitate lecture series and featured business speakers on campus. These lectures will be available to students, faculty and the community at large.

Dr. Reinhold Kramer, Professor with the Faculty of Arts, added, "The Faculty of Arts is delighted by the future-oriented vision of the Certified General Accountants of Manitoba. This gift from CGA Manitoba will allow professors to videoconference, annotate live PowerPoint presentations and do live streaming of classes to remote sites, all from a single podium. We're very excited about the possibilities, particularly for our Business program, but also for all of our other programs."



^ Dean of Science Dr. Austin Gulliver (pictured) is very pleased about the new Scanning Electron Microscope that will come to the Faculty of Science at Brandon University.



^ Guests at the CGA Conference Centre grand opening check out the new video and teleconferencing equipment.

## BU & YOU Campaign Wins National CCAE Prix d'Excellence Gold Medal

The *BU & YOU* Campaign booklet for year three was recognized as the Gold Medal winner for Best Campaign Case Statement and Materials by the Canadian Council for the Advancement of Education (CCAЕ) Prix d'Excellence awards.

The Prix d'Excellence is the annual awards program of CCAE, recognizing outstanding achievements in alumni and public affairs, development, student recruitment and overall institutional advancement. This program does more than honour excellence - it provides a chance to have entries assessed by professional advancement colleagues and judges across the country. Brandon University is very proud to have been recognized by the awards three years in a row.

Department of Institutional Advancement members Shawna English and Lisa Thomson (left and centre) accept the Canadian Council for the Advancement of Education (CCAЕ) Prix D'Excellence Gold Medal for Best Fundraising Case Statement at the CCAE National Conference in Prince Edward Island. >



## Brandon University Institutional Advancement Office hosts Fundraising Seminar

On March 21, Brandon University's Department of Institutional Advancement teamed with the Canadian Association of Gift Planners (CAGP) to host a fundraising seminar. More than 30 fund development professionals from Brandon, western Manitoba and Winnipeg came together to learn from two well-known fundraising specialists.

Norm Velnes, President of the Multiple Sclerosis Society of Canada, Manitoba Division gave a presentation on building the basics of a gift-planning program in your organization. Norm has over 28 years of experience in fundraising, and has taught courses and worked with organizations in the areas of fundraising, customer service and strategic development throughout Canada and the United States.

Joan Blight, Senior Consultant for Strategic Philanthropy, has over 30 years of extensive voluntary-sector development experience and is actively involved in CAGP. Joan's presentation: How to Approach Donors to Ask for their Support gave the audience some new ideas to put to use in their organizations.

## James Ehnes Concert Series Benefits School of Music

In September the *Standing Ovation* Campaign Honorary Chair James Ehnes, along with the Manitoba Chamber Orchestra, treated Brandon audiences to a two-night performance recreating his Juno Award-winning Mozart CD. The two concerts featured Ehnes playing all five of Mozart's violin concertos.

A benefit for the *Standing Ovation* Campaign, this unique two-part event raised funds to create a new scholarship for the Brandon University School of Music.

Ehnes notes that each of the five Mozart violin concertos was a masterpiece in its own right, and that each one is exponentially more complex than the previous one. To be able to hear them all live in concert over two nights is a rare privilege.



^ Standing Ovation Campaign Honorary Chair James Ehnes.



^ Presenter Norm Velnes gives a lecture on gift planning techniques at the CAGP seminar.

## Recognizing Past BUF Members

The Brandon University Foundation greatly appreciates the time and energy spent by its volunteer board. At the semi-annual board meeting this fall we recognized the service of some members who had stepped down over the past year.

BU Foundation President Dr. Jeff Bales presented outgoing board member Dr. Jay Winburn with a special framed certificate in honour of his continued dedication to the advancement of Brandon University.

We are also proud to recognize the service of our other outgoing members in 2006, many of whom we hope to honour at our upcoming Annual General Meeting: Barbara Bourassa, Tom Breneman, Joanne Campbell, Pat Coleman, Ian Dickson, Yasmin Hajian, Brian Mayes, Lana Myers, Ewan Pow, Joyce Taylor and Norval Young.

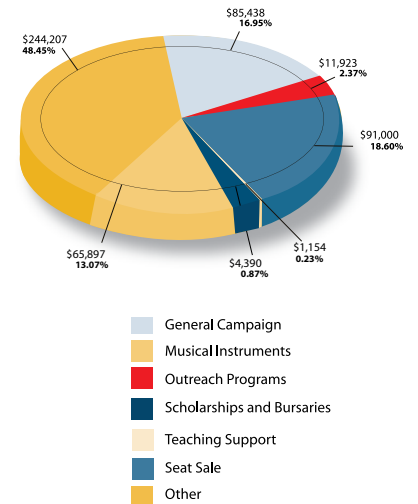


^ BU Foundation President Dr. Jeff Bales presents former member Dr. Jay Winburn with a certificate of appreciation.



# STANDING OVATION CAMPAIGN

Standing Ovation Campaign Funding Distribution by Category



## Greetings from the Campaign Chair

The *Standing Ovation* Campaign celebrates the centennial of Brandon University School of Music, a wonderful school that turns out some of the best and brightest musicians in Canada. I am pleased to announce that the Campaign is proceeding successfully, with \$504,008 raised to-date. Our alumni have contributed over \$30,000 and our faculty members have contributed more than \$15,000 to the campaign. Local businesses have stepped up to the plate and many private donors have purchased seats in the Lorne Watson Recital Hall.

Thanks to the generous gifts we have received, major enhancements have already begun in the School of Music. Our Student Lounge has been completely renovated, so that broken furniture and stained carpets are a distant memory. New instruments including a set of orchestral chimes, bari sax, bass trombone, 5-octave marimba and a much-needed set of tympani have been purchased. Student ensembles have received increased funding to tour Manitoba and many scholarships and bursaries have been created or increased.

Despite these numerous improvements, we still have important work to do. Our students and faculty would benefit tremendously from increased library acquisitions in Jazz Studies. We hope to secure enough funding to send more of our ensembles out beyond Manitoba annually. An endowment to fund the repair and replacement of musical instruments would be invaluable in the years to come. There's always a pressing need for more bursaries and scholarships for our many outstanding students. Information on these and other initiatives is available on the following pages.

To those of you who have already made a gift to the Campaign, I extend my sincere thanks on behalf of the students, faculty and staff of the School of Music. You truly are making a difference in the quality of the School of Music now and in the future. If you haven't yet made your contribution, I encourage you to do so. I would be happy to discuss the multitude of projects, funding options and payment plans available to you.

With my best wishes,

Dr. Glen Carruthers,  
Dean, School of Music Chair, Standing Ovation Campaign

## Standing Ovation Campaign Priorities

The *Standing Ovation* Campaign addresses the changing needs of the School of Music through support for musical instrument acquisitions, outreach programs to facilitate ensemble touring and other special initiatives, technology and equipment purchases, teaching support and new scholarships and bursaries. To this end, the *Standing Ovation* Campaign will focus on the following key needs over the next year:

A Musical Instrument Repair and Maintenance Endowment, paying out at least \$10,000 per year, will ensure that the School's fleet of instruments remains in pristine condition.

The acquisition of new brass, jazz studies,

woodwind and percussion instruments will aid in attracting students of the highest calibre to study at BU.

Support for ensemble touring gives BU music students valuable performance experience and allows audiences across western Manitoba, Canada and internationally to see the level of excellence that our School of Music students attain.

A jazz concert/workshop series will be the next step in continuing to build our newest program: Jazz Studies. The series will provide jazz students with an additional avenue towards musical growth.

Technology updates in classrooms and the media room will ensure that our students and faculty have the best possible tools to prepare for life after university.

Library acquisitions, particularly in Jazz Studies, support our faculty and students in their research and studies by filling in the history of a genre, allowing them to listen to performances by other musicians and providing sheet music to play.

Scholarships and bursaries are an ever-increasing necessity in the post-secondary environment. In order to attract and retain the best and brightest students, we must be able to provide competitive financial support.

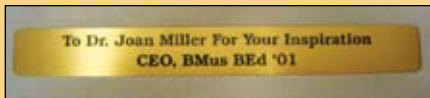


## Lorne Watson Recital Hall Seat Sale

The Lorne Watson Recital Hall has changed over the last year. Still there are the well-used rows of seats facing the busy stage. Beautiful music is still heard almost daily, resonating within its walls. But you will notice one change: the arms of many of the seats now hold plaques dedicated to family members, faculty, businesses and even beloved pets.

The Lorne Watson Recital Hall Seat Sale was launched in conjunction with the *Standing Ovation* Campaign in the Spring of 2007 to raise funds for the century-old School of Music. Since then, 91 of the 206 available seats have been "sold", raising \$91,000 to establish an endowment that will support the greatest needs of the School of Music in perpetuity.

Seats are still available, and with a tax-deductible donation of \$1,000 (payable in installments) businesses, donors or their loved ones will be recognized, honoured or remembered with a bronze nameplate on one of the seats in this world-class venue.



^ Cody Obst, a generous alumnus of the School of Music "purchased" this seat through the Lorne Watson Recital Hall Seat Sale in honour of his professor, Dr. Joan Miller.

## School of Music Students' Lounge gets a Makeover

Brandon University's music students finally have the home away from home they've been waiting for. Once filled with broken furniture and dirty carpet, the School of Music Students' Lounge has been transformed thanks to \$26,000 in donations to the *Standing Ovation* Campaign from the Brandon University Alumni Association (BUAA) and Brandon University Students' Union (BUSU).

The newly renovated music students' lounge, made possible through a \$16,000 donation from the BUAA and a \$10,000 donation from BUSU allowed the University to completely refurnish, re-floor and repaint the room as well as purchase a new refrigerator and microwave.

"The students and the community use the lounge every day, afternoon and evening," says School of Music student Ashley Boychuck, "whether it be for studying, taking a practice break, relaxing, doing group work, holding Brandon University Music Students' Council meetings or parents waiting for their child's lesson to be finished. Now, thanks to the renovations, we have a perfect setting for building relationships and developing ideas, and a proper place to eat lunch and supper, with enough comfortable chairs and couches to hold meetings.

## The Jones Scholarship in Music History and Literature

Dr. Lawrence Jones, a respected music faculty member, and his wife June have always been avid supporters of the Brandon University School of Music. So it is fitting that they were among the first donors to the *Standing Ovation* Campaign.

June and Lawrence established the Jones Scholarship in Music History and Literature to assist in the development of well-rounded musicians. Their scholarship honours and encourages excellence in the study of music history among students in the undergraduate and graduate music programs at BU. June was the music librarian at Brandon University for many years. Both the space – her design – and the collection owe much to her initiative and expertise. Lawrence taught courses in Music History and Literature to undergraduates and graduates during his long tenure at Brandon University.

The scholarship will award \$500 annually to a music student with a record of high achievement and promise in the study of music history and literature. The recipient must be continuing his/her studies in this field. At the discretion of the scholarship committee, it may be awarded to a student in the M.Mus. program who has demonstrated excellence in this area of study.

## The Barbara Bailey Bursary/Scholarship in Voice

Barbara Bailey established the endowed Barbara Bailey Bursary/Scholarship in Voice to assist talented students enrolled in the voice program at Brandon University. The award will support those students who have demonstrated both financial need and musical merit.

Barbara and her husband, Brandon College alumnus Ray Bailey '45 are long time friends of Brandon University. Their generous, heartfelt contributions over the years have made a significant difference to our students and programs. In recognition of their exceptional support, a Practice Studio in the QEII Music Building will be named in their honour.

Barbara's contribution of \$10,000 was matched to \$20,000 by the Manitoba Scholarships and Bursaries Initiative (MSBI), and will be awarded annually to a Voice Major in the School of Music on the basis of financial need and musical merit.



^ BU Alumni Association President John Scott, School of Music student Ashley Boychuck and former BU Students' Union President Nathan Peto (left to right) officially open the new School of Music Students' Lounge.



^ Barbara and Raymond Bailey (centre and right) with BU Foundation Past-President Doug Adams.

## Standing Ovation Campaign Cabinet

### Campaign Executive

Dr. Glen Carruthers, *Campaign Chair*

Dr. James Ehnes, *Honorary Campaign Chair*

The Honourable R.D. Bell, LLD, *Honorary Patron*

### Members At Large

Prof. Greg Gatien • Mr. Brian Mayes • Prof. Mark Rudoff

Dr. Don Williamson • Dr. Jay Winburn

# Brandon University Healthy Living Centre



Brandon University has announced plans for a new, \$14 million Healthy Living Centre. The centre, which will be located at Louise Avenue and 20th Street in Brandon, will incorporate the University's existing 30,000 square-foot facility, which will undergo extensive renovation, and add a new construction that will expand eastward on Louise Avenue to increase the building's overall size to approximately 70,000 square feet.

## Who will benefit from the new facility?

The new Brandon University Healthy Living Centre will, of course, be of great benefit to Brandon University's students, staff and programs: Bobcat sports teams will have a national-class gymnasium in which to play home games and welcome visiting teams. New classrooms will provide expanded learning space for BU Physical Education courses and BU recreational programs and Mini University will have access to more space and more floor time, and therefore the ability to expand programming. In addition, the campus will benefit from the addition of 150 new parking spaces.

The new facility will NOT, however, be limited to Brandon University students and staff! Local high school teams will be welcome, through arrangement with BU Athletics, to use the facility for hosting games and tournaments. Westman citizens will be welcome to obtain memberships for use of the indoor walking track, weight training equipment and cardio fitness facility. The enhanced sports medicine centre will provide care and treatment to people in the Westman community who require it.

## Planning and Construction:

**Tentative construction start date:** Spring 2009

**Architects:** MCM Architects Inc.

**Environmental standards:** The new building will be built to the green standard of LEED Silver, making it one of the most energy efficient facilities in the City of Brandon. Renovations to the existing BU Gymnasium facility will, as much as possible, be designed to those same standards.

## Costs and Funding:

The new centre is currently budgeted at \$14 million. Private funding will account for approximately one third (\$4.7 million), while the other two-thirds (\$9.3 million) is anticipated to come through federal and provincial programs. To date, \$1,706,467 million has been raised through private donations.

## Facility Features:

Indoor walking track

Cardio fitness facility

Multi-purpose area

New weight resistance exercise machines

Three full-size gymnasiums

Expanded sports medicine facility

1300 new bleacher seats

Modern change rooms and washrooms

New Bobcat Athletics Hall of Fame area

Additional classroom space

150 new regular parking stalls, plus five new stalls for disabled persons  
Enhanced programming for Brandon University students and staff, and the Westman community



## What People Are Saying

“Brandon University’s new Healthy Living Centre will be of great benefit to not only Brandon University staff and students, but to the Brandon community in general,” says **Brandon University Athletic Director Kirk De Fazio**. “We’re building a facility that will welcome everyone. I want to personally invite Brandon’s seniors to come in and get memberships for using the walking track and cardio facility, Brandon high schools to approach us about using the facility for tournaments and events and everyone in the community to make use of the enhanced sports medicine facility that will be included. The point is that it is very important to us that this centre not be just for the Bobcats and for BU students, but for everyone.”

“This is a facility that will benefit the University and the Brandon Community,” says **Brandon University President and Vice-Chancellor Dr. Louis P. Visentin**. “Personally I can’t wait to power walk on the track when it’s minus 40 outside.”

“This facility will allow us the ability to help and monitor the whole academic, physical, and mental wellness of our student athletes,” says **Bobcats women’s volleyball Head Coach Lee Carter**.

“The new facility will be of great benefit to Bobcat teams and provide a foundation to remain competitive with other Canada West programs for years to come,” says **men’s volleyball Head Coach Russ Paddock**. “It will also be important to the city and Western Manitoba as many events, sporting and otherwise, will now be able to take place outside of Winnipeg.”

“We have a University with nationally ranked basketball and volleyball teams that as a community we are very proud of,” says Brandon dentist and former BU & YOU Campaign Chair, **Dr. Tom Breneman**, an ongoing proponent of the Healthy Living Centre project. “A new facility will enhance these programs and increase community involvement with better viewing options. An indoor track and improved fitness areas will be an asset to both campus and community lifestyles.”

Bobcat fan and **Brandon resident Ellis Crowston** says “I’ve always said that Bobcat sports is the best value for your sporting dollar in Westman and a new facility will encourage more people to discover this.”

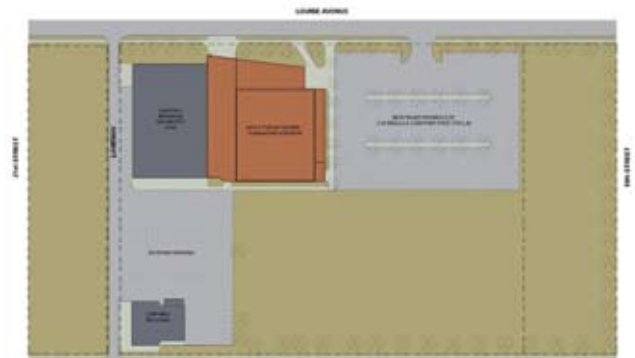


Main Level



Second Level

Lower Level



Centre Site



# Brandon University Foundation Presidents' Circle



▲ The Els & Kevin Kavanagh Courtyard, soon to be the home of the new campus sculpture garden.

## Brandon University Foundation Presidents' Circle

The Brandon University Foundation Presidents' Circle brings together the University's most dedicated supporters to participate in campus accomplishments. Now in its sixth year, the Presidents' Circle recognizes the generous contributions of these donors with invitations to a variety of unique events highlighting the diversity of our campus and programs. These exclusive invitations give Presidents' Circle members a first hand opportunity to participate in the accomplishments of Brandon University students and faculty.

Presidents' Circle members are invited to exclusive events throughout the season. These unique opportunities arise throughout the year and have previously included readings by Thomson Highway (the Stanley Knowles Distinguished Visiting Professor) and art shows in the student-run Glen P. Sutherland Gallery of Art. Presidents' Circle members attend these events as guests of Brandon University President and Vice-Chancellor Dr. Louis P. Visentin and Brandon University Foundation President Dr. Jeff Bales.

In honour of the sixth anniversary of the Presidents' Circle, alumni and friends have the opportunity to designate their

gift to a new initiative on campus. Over the past five years, Brandon University has embarked on an extensive campus beautification program, which has included the creation of a sculpture garden in the Els and Kevin Kavanagh Courtyard between historic Clark Hall and the George T. Richardson Centre. This area provides a venue for students, faculty and staff to relax and is enjoyed by all members of the campus and extended Brandon community. A key part of a commitment to make the University a welcoming and beautiful place, Presidents' Circle donors have contributed towards this innovative courtyard beautification.

Just five Presidents' Circle level gifts towards this initiative will enable the University to install a sculpture that will forever recognize the impact of Presidents' Circle members on our campus. This initiative is carried out in association with our Visual and Aboriginal Arts Department. Alternatively, our members may always choose to support a faculty or department of their choice.

Membership in the Presidents' Circle begins with a minimum contribution of \$1,000, or as little as \$19.25 per week.

A single donation at this level greatly assists students and faculty; purchasing a much needed instrument for the School of Music, a research and technology item for the Faculty of Science or significantly enhancing a scholarship or bursary.

For further information or to become a member of the Presidents' Circle, please contact Cindy Yacyshen in the Department of Institutional Advancement at 204.727.9689, or via email at [yacyshen@brandonu.ca](mailto:yacyshen@brandonu.ca).

## A Broadway Christmas

On December 16, 2007, Presidents' Circle members and their guests were treated to our traditional holiday reception, this year themed A Broadway Christmas at University House. The afternoon featured excellence in musical education at BU. Guests were treated to performances by faculty members David Playfair and Greg Gatien, along with students, Jonathan Chiupka, Andrea Gedrasik, Josh Piché, Cecilia Richards, Janaka Welihinda and Cam Wilkes.

The jazz ensemble, led by Greg Gatien, played a variety of show tunes, standards and holiday favourites, setting the mood for an afternoon celebrating the holidays in the style of the Great White Way. When they took a break, David Playfair led his students through a vocal set featuring selections from Broadway shows such as *Mame* as well as some holiday favourites including "Baby it's Cold Outside". Brandon University President Dr. Louis P. Visentin received a special serenade of "Santa Baby" from BU music student, Andrea Gedrasik.

The event was beautifully catered by Remington's Seafood and Steakhouse. They provided an array of New York-style appetizers and desserts including lox and cream cheese, dim sum, soft pretzels and of course, New York cheesecake.

As the event came to a close and guests headed home, they were given one more surprise. Everyone left with a bottle of Presidents' Circle Reserve wine, courtesy of Ray and Myrna Schween of the Happy Corker, and a limited edition Brandon University holiday ornament, adorned with a line drawing by Dr. Visentin. We thank all our members who attended this event for making it so memorable.



^ Brandon University Staff and Students at the Broadway Christmas open house.



^ PC members mingle and share in the holiday fun.



^ Voice students from the School of Music treat guests to a special recital.



^ BU President Louis P. Visentin greets PC members as they arrive.



^ Faculty member Greg Gatien leads a jazz trio.

## Presidents' Circle: George & Mary Gooden

Some people are energized by a challenge, give more than they take and always seem to leave a place better than they found it. George and Mary Gooden are such people. George and Mary have been giving back to their alma mater almost since the day they left, as Presidents' Circle members and in many other ways such as volunteering their time and supporting the Legacy Giving program.

George and Mary started at Brandon College in 1939, but George's initiation into the business world came early when his father became ill. At 19 years of age, George tried to work, run the business and attend university, but found that he could not do it all. He began dropping courses until he was no longer attending university. In 1949 he officially took over the family enterprise and continued its successful operation for over 40 years.

As the years passed, George regretted never having completed his university studies. Finally, in the early 1960s with all three of their children in junior high, George went back to Brandon College to finish what he had started and graduated in 1964.

George is an inspiring example to his community. In addition to his acute business acumen and active community and family life, George has left his mark on the community through his leadership roles with BU. He served the University as President of the Alumni Association, was Chair of the Board of Governors and played a key role in the creation of the Brandon University Foundation, of which he became President for a term beginning in 1989.



^ Long-time PC members George and Mary Gooden enjoy the Broadway Christmas event.

Mary is extremely active and involved in the community in her own right. She has many personal interests and owned and operated her own art gallery for 15 years. She is a very talented potter and continues to support the local art scene, along with all her husband's activities. In 1993, Brandon University presented George with an Honorary Doctorate of Laws degree. "I was totally flattered and humbled," says George. "I felt that there were a lot of deserving people and didn't consider myself to be in the same league."

The University is very special to this remarkable couple as Mary explains, "Brandon College just keeps giving and giving. The more we participate, the more we get back. It really is a rich connection."



# ANNUAL FUND

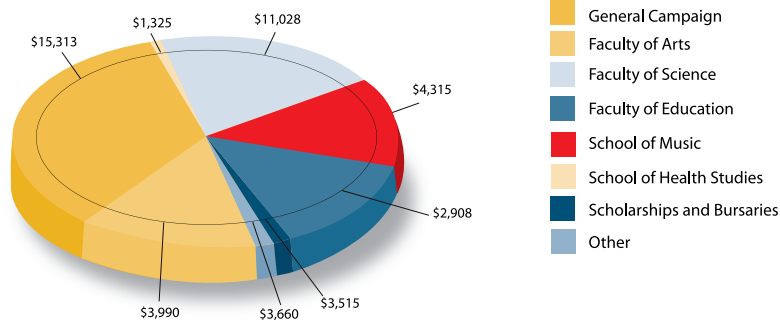
## Annual Fund 2007 raises over \$71 Thousand

Thanks to alumni throughout Canada and beyond, the Annual Fund is a catalyst for enhancing and improving Brandon University for today's students. This year's campaign involved two separate appeals. The first, in April 2007 was directed to our School of Music alumni in celebration of the School's 100th anniversary and the *Standing Ovation* Campaign, and raised \$25,245. Our second appeal, launched in October and sent to all of our alumni, raised an additional \$45,984 with a focus on the following areas:

- School of Music – *Standing Ovation* Campaign
- School of Health Studies – Dean's Fund\*
- Faculty of Arts – Dean's Fund\*
- Faculty of Science – Dean's Fund\*
- Faculty of Education – Dean's Fund\*
- Area of Greatest Need
- Presidents' Circle (\$1,000+) Campus Beautification

\*Contributions to the Dean's Funds support the most pressing needs of each faculty, at the discretion of the Dean.

Annual Fund Gift Distribution By Category



### Ernest Criddle and Rosemary Bonyun: Two Decades of Annual Giving



^ Ernest Criddle and Rosemary Bonyun (both retired) at their home in Ottawa. Missing are five grown children and eight grandchildren.

As an alumnus, Ernest Criddle, class of '52, is an important part of the history of Brandon College/University. Together with his wife Rosemary, he is an important part of the future of Brandon University as well, thanks to the generous support they have provided annually for over 20 years to Ernest's alma mater.

Their donations to various areas at the University, including the John E. Robbins Library, the Faculty of Science, scholarships and bursaries and special campaigns have undoubtedly improved Brandon University. Thanks to them, the next generations of students will receive the high quality education that Ernest enjoyed during his years at college. Ernest and Rosemary's generosity is evident as together they support four universities, BU among them.

Ernest, born into farm life near Wawanesa, graduated from Brandon Collegiate and then Brandon College. Brandon College provided Ernest with a background in science: chemistry, physics, math and connections to other subjects. This served him well for a career that touched on diverse tasks including physical chemistry, fuel cells, space, management, clean rooms and cold

fusion. He recalls having early concerns about the cost of education and receiving assurances from contacts at numerous universities that he should not worry but expect to repay the system many times over through endless appeals. How true it is. Ernest has repaid his school in generosity, ensuring its success now and in the years to come.



^ The 2007 Annual Fund student callers.

# Donors to the 2007 Annual Fund by Class Year

Every effort has been made to ensure that this listing is accurate and complete. Please report any errors or omissions to the Department of Institutional Advancement at 204.727.7374 or 1.877.282.4483.

<b>1933</b> Dorothy F. McDowell Grace D. O'Brien	<b>1954</b> Donald N. Adams Clive Bate Winnifred Campbell Albert & Marion Gogol Norman Hedison Margaret I. Tjaden	Patricia C. Thorn Eleanor & Bob Tilton	Margaret A. McPherson Larry V. Moldowan Sharon Moore William F. Price Elizabeth Sumner Joyce R. A. Taylor Jane G. Walton	<b>1978</b> Faye E. Arthurson William & Kathy Bolley Ellen Carter William J. Chester Josephine V. Chudzik James D. Comrie Lorraine W. Fisher Jacqueline P. Hurton Anne Matiation Robert A. Pappas Gerald J. Rocan Mark E. Wolfe	Inderjit S. Panesar Kimberley Stovel Edna I. Wells	<b>1995</b> Paul A. Barre Marcia G. Christie Amelia S. Reid Nancy E. Smith Martin Blaine C. Steen
<b>1935</b> Helen A. Toms	<b>1955</b> Allen & Myrna Hattie Barrie T. McLeod Helen & Kenneth Mitchell Marjorie R. Pringle	<b>1965</b> Muriel J. Anderson Christina E. Cassels Margaret Hannah Laurie R. Ricou Donald W. Sherritt Norrine P. Shobrooke Barbara Watt Robert J. Wilkins	<b>1972</b> Sandra L. Armstrong Karen Elves Dr. Martin W. Johns Norman Koe	<b>1979</b> Gay V. Boese Nicole S. Darou - Farmer Gordon K. Goldsmith Jean M. Kustra Jean A. Mackie Douglas G. Pedden Linda Sanderson Lynne Shier Metro Solomon	<b>1986</b> Elsie E. Beavis Glenn R. Carradice Edna M. Cookson Jean Corriveau Helen L. Deacon Greg Dyck Perri L. Gardner Michelle R. Gervin Brian J. Hydesmith Jane L. Keeling-Ribbel Dr. Robert McDougall	<b>1996</b> Deanna F. Henderson Rolande F. Lemoing
<b>1936</b> Wendell H. Hewitt-White	<b>1956</b> Elizabeth M. Hinch Robert G. Kidd Marina L. Laking Mary E. Roach Norma M. Shepherd Harold C. Stewart	<b>1966</b> Clair Davies Donna R. Gamache Henry & Judith Klassen Ronald L. Berry Carol M. Poppellewell Edith A. Treller	<b>1973</b> Betty-Anne Aitken David P. August Donald L. Berry Harvey A. Bridgeman Vona E. Cochran David & Inez Fairlie Danny C. Ferg Frances E. MacDougall James D. McLachlan Donna L. Reid Edward D. Sklar Margaret Taylor Donald E. Tully	<b>1980</b> Leslie C. Carrothers Larry E. Clark Violet L. Joss Patricia G. McKenzie Margaret McNutt-Reichelt Melva M. Milne G. B. Muirhead Dr. John Murdoch & Sharon Davis-Murdoch George Reimer Alma E. Toms Heleen Woychyszyn	<b>1987</b> George R. Campbell Eva M. Griemann Yvonne Clara M. Inniss Joan MacKay Barbara F. McLeod	<b>1997</b> Chantal Lancaster Sandra M. Loeppky Dale R. Normandeau Lily O'Driscoll Chadwin K. Peters Sophie Sarah M. Spence
<b>1937</b> A Generous Person	<b>1957</b> Dr. Garth Bray Lorne W. Day Mina J. Dyck Louis M. Lenz Joyce Myska Irene Pettapiece	<b>1967</b> Gary & Angela Brawn Prema Bursa Michael P. Czuboka Bryan J. Fuhr Jocelyn H. Godolphin Cheryl Johnston Alice J. Oswald Morna Paterson Brian C. Phillips Linda S. Schrader J. Wally W. Seipp	<b>1974</b> Robert D. Campbell Frances A. Dagg Robert G. Deveson Barry J. Diller Stephen R. Dmytriw Margo F. Foxford Dona M. Keys Linda Leon Richard S. Marshall Linda F. Price Harold J. Pullaw John E. Stonehouse Carol Wilkie	<b>1981</b> Evelyn R. Currie David C. Hanly Donald E. Horbas Joseph Kustiak Helen M. Lorimer Linda J. Lyons Catherine I. Pedden Dawn Tesarowski Edna L. Thomassen	<b>1988</b> Shawna Dyck Colleen D. McCarthy Dr. Norma Walmsley Monica J. Woods	<b>1998</b> Patricia A. Hargreaves
<b>1941</b> Douglas Pulfer	<b>1958</b> James L. Callander William J. Friesen Myrna Hall Leone Hillier Marion Kreshewski J. Elaine Rust	<b>1968</b> Karen E. Fingas Patricia J. Forsythe Lavonne R. Graham Nora L. Halladay Alvin Jackson Mary Kalberg Dr. Brian & Lynne Manns Margaret A. Yorke	<b>1975</b> Brian G. Colli Joy R. Dell Garry W. Froese Ruby E. McIntyre Alfreda W. Mostoway Robert L. Neumann Allistair G. Scott Maurice D. Thevenot	<b>1989</b> Karen L. Labahn Patricia E. MacDonald Margaret A. Menzies Christine A. Penner Darren E. Pretula Lorraine G. Rozak Jane H. Scott	<b>1989</b> George R. Campbell Eva M. Griemann Yvonne Clara M. Inniss Joan MacKay Barbara F. McLeod	<b>1999</b> Margaret Hanulik Nicole E. Russell Jeanne A. Yuen
<b>1942</b> George W. Campbell Arthur H. Lamont Dorothy C. Tinline	<b>1959</b> Cameron B. Davreux James & Jill Donaghy Gary C. Martin Herbert & Arlene Murray Wayne Pettapiece	<b>1969</b> Elizabeth J. Armstrong Laurence M. Bertram Dorine M. Best Lon F. Brandon Nancy E. Cornish Margaret Ellis John B. Irvine Stuart T. Johnson Paul A. Laval Edward Mazer David & Sharon McInnes Brian E. O'Donnell John W. Russell	<b>1976</b> Laurie Anderson Irene E. Bauman Elaine A. Bollman Colin G. Cassidy Colin S. Goldstone Lynn Grice Ann H. Hanks Dale Harvey Christopher W. Kennedy Alice Little Jean H. MacKinnon Renatta K. Mills Agnes E. Smith Donna M. Vrooman Ellen J. Young	<b>1990</b> Hilda H. Bighetty Sheila Monica G. Connon Michael S. Diehl Maggie Flett Melanie H. Martens Sherry L. Punak-Murphy	<b>1990</b> Doreen J. Tillotson	<b>2000</b> Fenny Khono
<b>1943</b> Doreen J. Tillotson	<b>1960</b> Kathleen Antrobus Nancy Birch Darlene Bright Sandra G. Donin Barry D. McLennan Douglas T. Ross	<b>1970</b> Brian H. Bailey Sally Bender Marguerite L. Campbell Paul J. Curtis Ralph J. Gardiner Clarice Gilchrist Homer W. Gill Marion J. Mazer Barry Minish Thelma Peregrino-Solomon Marion A. Robinsong Sandra M. Schepp James D. Wheeler Margaret L. Wilkie	<b>1977</b> Marvin R. Beaumont Kenneth D. Bosiak Lorna J. Coe Blaine T. Donald Lorraine Griffiths Dr. D. Garth Jackson Kathleen Lawson Hazel M. McKean Helen Nantais Mildred B. Racine David Wilken	<b>1991</b> Michael M. Greene Teresa A. Janz Barbara L. Jones Darcy W. Kroeker Alison G. Murray	<b>1945</b> Gwen Hiller Margaret E. Watt	<b>2001</b> Dawn J. Deroy Caroline A. Harvey Glenna J. Lee Douglas A. VanDamme
<b>1946</b> Dr. James G. Lindsay	<b>1961</b> Donna & Ross Adrian Nona J. Chlan Elsie M. Dickenson Penelope B. Mc Kinnon Brian J. McKenzie Shirley M. Moore Agnes M. Stephenson Averill M. Whitfield	<b>1971</b> Maralice Blagden Dorothy J. Davidson Valerie Davies Dr. Emmett Elves Barbara Fraser Dorothy E. Kilburn Marjorie E. McCamis Larry E. McCrady	<b>1982</b> John B. Berry Charles C. Campbell Owen J. Cory Dr. Henry & Shirley Duckworth Alicia N. Dzisiak Mary M. Gaber Gladys Kerr Sharon McArthur Joel M. Salaysay	<b>1992</b> Michael M. Greene Teresa A. Janz Barbara L. Jones Darcy W. Kroeker Alison G. Murray	<b>1947</b> Anne R. Fahrig Evelyn B. Salt Paul H. Westdal	<b>2002</b> Margaret Spence
<b>1948</b> Harlaine Irma & Norman Armstrong Lois M. Daly Olive J. Fleming Francis J. Humphries Kenneth Knight Leon L. Price A Generous Person	<b>1962</b> Henry Champ & Karen DeYoung Martha E. Fair Lelonie M. Whitmore	<b>1972</b> Brian G. Colli Joy R. Dell Garry W. Froese Ruby E. McIntyre Alfreda W. Mostoway Robert L. Neumann Allistair G. Scott Maurice D. Thevenot	<b>1983</b> Patricia L. Agar Linda P. Braun-Hornecker James S. Cornett Poppy Cumming Greg & Kathleen Lawson Helen L. Stewart	<b>1993</b> Gregory J. Bryant Arlette D. Knelsen Krista M. Kristjanson Kerry K. McQuarrie Smith A Generous Person	<b>1949</b> Florence M. Brownridge Dr. Clayton & Dorothy Elston Tena I. Gough Peter & Jean Hendry Marian E. Rutt Dorothy E. Semple	<b>2003</b> Wendy J. Ardron Shauna Kotschorek
<b>1950</b> Isabella M. Irwin Donald Sumner Marjorie E. Trott Ida M. Wyllie	<b>1963</b> Eric A. Hillman Marjorie Leach Nola M. McBurney	<b>1973</b> Marvin R. Beaumont Kenneth D. Bosiak Lorna J. Coe Blaine T. Donald Lorraine Griffiths Dr. D. Garth Jackson Kathleen Lawson Hazel M. McKean Helen Nantais Mildred B. Racine David Wilken	<b>1984</b> Susan M. Billy Richard N. Cotton Elizabeth A. Mitchell Larry J. Rainnie Bernice M. Robb Janet Sirski Marilyn D. Slawinsky	<b>1994</b> Jennifer L. Brown Ursula G. Bruyere Lori D. Carlson-Judson Boyd Minshull Julia M. Pratt Lynda Stiles	<b>1951</b> Barton C. Bruce Dr. Angus & Devona Juckes Doreen Smillie	<b>2004</b> Dianne K. Bauman Chad H. Cobbe Larry D. Eagle Collene D. Sand
<b>1952</b> Donna J. Agnew Ernest E. Criddle F. Joan Garnett Neil & Irene McKellar Garfield W. McMahon Dr. Kenneth & Helen McNeely	<b>1964</b> Janice R. Barton Lorna & James Clark Carole E. Dence Catherine Kay Dr. K. Glen & Evelyn Kidd A. B. Miller Dr. Isabelle Mills James M. Simmons Elizabeth J. Sprott	<b>1974</b> Robert D. Campbell Frances A. Dagg Robert G. Deveson Barry J. Diller Stephen R. Dmytriw Margo F. Foxford Dona M. Keys Linda Leon Richard S. Marshall Linda F. Price Harold J. Pullaw John E. Stonehouse Carol Wilkie	<b>1985</b> Dorothy E. Campbell Heather D. Hart Velma F. McAdam Kathleen M. Moquin Kelvin G. Nachtigall	<b>Non-Alumni</b> Christopher Brawn Dr. Robert & Catherine Brockway Dr. Gerald & Sandra Coueslan William Edwards EnCana Cares Foundation Norma & Robert Farquharson Andrew Legebokoff Ena Sparrow John H. Strain Maria Szivos Dr. Westley & Helen Wong	<b>1953</b> Patricia A. Gaye James McKibbin Jean E. Paton	



## The Gift of a Lifetime Legacy Giving at Brandon University

Over the years, Brandon University and its students have benefited greatly from the foresight of generous friends and alumni. Planned contributions, both large and small, have helped BU to maintain the high standards that have truly made the campus *something special*.

Legacy gifts are an increasingly popular method of donating to Brandon University. In addition to attractive tax incentives, many individuals want to leave their own legacy for which they will be remembered. Gifts of every size have wide-reaching benefits that impact the University today and into the future. Methods of giving are as widely varied as the funding interests of our donors.

A legacy gift can help you to achieve your philanthropic goals of providing support for Brandon University while at the same time ensuring that your personal and financial objectives are met.

### Bequests

A bequest is a gift made to the University through a will. A bequest can consist of a cash contribution or of capital property including art, rare books or musical instruments, to name a few.

### Securities

Donating securities is the least expensive way to make a gift of appreciated, publicly listed securities such as stocks, bonds and mutual fund units.

### Life Insurance

A gift of life insurance can be a simple, creative way to contribute to the University's

future. Gifts can be made either by taking out a new policy from the company of your choice or by naming Brandon University as irrevocable owner and beneficiary of an existing policy.

### Charitable Gift Annuities

A Charitable Gift Annuity is the ideal charitable vehicle for individuals who have always wanted to make a large gift, but do not have the means to do so now. Over the years, many people accumulate capital to provide a steady revenue stream in retirement. A gift by annuity designates Brandon University as beneficiary of the annuity's balance.

### Charitable Remainder Trusts

A Charitable Remainder Trust is a voluntary transfer of property made by a donor or their designate. It is a legal agreement whereby the donor creates a trust, either through a trust company or a named individual. The trustee holds and manages the assets and the donor (or other named beneficiaries) retains the interest income for life.

### Charitable Residual Trusts

A Charitable Residual Trust is a similar giving arrangement to charitable remainder trusts. In this case, however, tangible assets such as artwork, or a personal residence is donated to the University through a signed agreement. The University then owns the property and the donor retains the right to continue to enjoy the possession during their lifetime.

## The A.E. McKenzie Legacy Society

The A.E. McKenzie Legacy Society is named in honour of Albert Edward McKenzie, the first person to designate a legacy gift to Brandon University. Given at the height of the Depression in the 1930's, the gift saved the University from certain closure.

The Legacy Society recognizes the leadership of farsighted individuals who have/will use a planned gift to create their legacy. Unfortunately, many legacy gift donors go unrecognized during their lifetime because the University is unaware of their generosity. Recognition is our way of extending sincere appreciation to those who have committed to a legacy gift. When requested, anonymity is kept in strictest confidence.



Dr. K.A.H. Adams '55  
Patricia A. Britton '87  
Gerald R. Brown '56  
Florence M. Brownridge '49  
Dr. William '46 and Patricia '45  
Chefurka  
Robert A. Clement '30  
Christine H. Coltart '46  
Jacqueline M. Derhak  
J. Kelly Edmison  
Margaret Eggleton '41  
Maxine Ellend  
Pamela Forsyth  
Colleen Galloway  
Dr. George K. '64 and Mary '42  
Gooden  
Carol A. Hendrickson  
Alice and Donald Hurd  
Alex Jackson

Gordon C. MacPherson  
Dr. John and Paula Mallea  
Eileen McFadden '53  
Warren K. McKinnon  
Dr. Kenneth Nichols  
Alexander W. Paul  
Bryce Reikie  
Robert Richardson Jr. '93  
Dr. Ron and Gail Richert  
Dr. Helen Riesberry '42  
Dr. Victor '39 and Phyllis '39  
Sharpe  
Douglas Simpson  
Elizabeth Storeshaw  
Adam Sus  
Sharon L. Wickman '70  
Ivy '54 & Norval Young  
A Generous Person





^ The Lyall and Evelyn Robinson (Syncopators) Scholarship will benefit BU students like those in our jazz ensembles, who fit numerous performances into their busy schedules each year.

## Legacy Gift Gives Music Students New Support

Lyall and Evelyn Robinson had a special appreciation for music, playing for over 70 years in numerous dance bands. In honour of their lifelong love of music, Lyall and Evelyn made a generous provision in their will to benefit the Brandon University School of Music, creating a new endowed scholarship for BU students.

"This very generous estate gift will benefit our students tremendously," says Dr. Glen Carruthers, Dean of the School of Music. "I'm especially pleased that this award recognizes students whose outstanding talents benefit our community. So many of our students are actively engaged in the musical life of Brandon and Westman, and it's terrific to be able to recognize them with this new award. I'm also delighted that musicians who were active in our community in the previous century are helping brilliant young musicians of the present."

Evelyn and Lyall enjoyed playing with the Royal Canadians band in the 1930's and 1940's before organizing the Brandon Syncopators in 1952. The Syncopators became a Manitoba institution, starting off as the house band at the Palladium in the 1950's, then moving on to the Prince Edward Hotel and on to Danceland between 1960 and 1980, also playing at weddings, graduations and New Year's Eve parties.

The Syncopators were unique in their popularity, longevity and their impact on the musical and social fabric of Brandon and southwestern Manitoba. During their 47 years of performing, they were anchored by Lyall on the alto saxophone/clarinet and Evelyn on the organ. During that time, there were over 40 talented Manitoban musicians (many of whom were Brandon University music alumni) who filled out the band, giving them a distinctive style over the years. The Syncopators final performance was September 25, 1999, when Lyall was 90 years old and Evelyn was 85.

Their generous estate donation of \$25,000, matched to \$50,000 through the Manitoba Scholarships and Bursaries Initiative (MSBI), established the Lyall and Evelyn Robinson (Syncopators) Scholarship in Music. This annual scholarship will award approximately \$2,500 to a music student who has demonstrated his/her commitment, dedication, persistence and love of music by sharing his/her talents throughout the community. The recipient shall use the funds to expand his/her musical education while continuing to display a desire to perform publicly.

# The Order of the Sheaf

January 1, 1980 – December 31, 2007

For over 100 years Brandon University has received an enormous amount of financial and volunteer support from individuals and organizations. The Order of the Sheaf is an honour society that recognizes those whose financial support has helped to ensure the advancement and quality of higher education at Brandon University.

This year we are pleased to report that we have inducted 56 new members into the Order of the Sheaf and that 24 current members advanced to a higher philanthropic level. Donors reach recognition levels based on their total contributions to Brandon University. Membership in the Order of the Sheaf begins automatically when a donor reaches a cumulative gift level of \$1,000 or more. Names listed in italics advanced to a new level of recognition in 2007, those listed in bold indicate that the donor is new to the Order of the Sheaf.

Every effort has been made to ensure that this report is accurate and complete. Please report any errors or omissions to the Department of Institutional Advancement at 204.727.7374 or toll free at 1.877.282.4483.

**Chancellor's Honour Roll: \$1,000,000 +**  
James Richardson and Sons Limited  
Pioneer Grain Company Limited  
Richardson Greenshields of Canada Limited  
*A Generous Person (2)*

**Patron: \$500,000 - \$999,999**  
Michael & Dorine '51 Chernoff  
Dr. Ferdinand & Dr. Sophie Eckhardt  
The J.W. McConnell Family Foundation  
Dr. Viola Lobodowsky  
The Louis Riel Institute  
Manitoba Metis Federation Inc.  
*Joseph H. Robertson '39*  
The Winnipeg Foundation

**Benefactor: \$100,000 - \$499,999**  
The Honourable R.D. Bell, LLD  
Dr. Harvey & Irene Bergner  
Blue 292, Inc.  
Marion E. Bowen  
Brandon Clinic  
James William Burns  
Canadian Imperial Bank of Commerce  
Canexus (Nexen)  
Mary Irene Cowan  
Craig Broadcast Systems Inc.  
Great West Life Assurance Company  
GreenRidge Business Systems Corporation  
Investors Group  
ISM Information Systems Management Corporation  
Kinsmen Club of Brandon  
Dorothy Hope Kitchen  
Manitoba Chartered Accountants Foundation Inc.



^ Manitoba Chartered Accountants Foundation

Manitoba Hydro  
Albert Edward McKenzie  
*Jack McMillan '60*

Meyers Norris Penny LLP  
Pepsi Bottling Group (Canada) Co.  
Petro-Canada  
R. Howard Webster Foundation  
Dr. Anne Selley Robertson '37  
Royal Bank of Canada  
Simplot Canada Limited  
Mary Smart  
Dorothy E. Stewart  
Maurice F. Strong '68  
Gwendolyn (Munt) Sutherland '37



^ Gwendolyn (Munt) Sutherland (centre) with family

TD Canada Trust  
Thomas Sill Foundation Inc.



^ Thomas Sill Foundation Inc.

Tundra Oil and Gas Ltd.  
Ward Watson  
Wawanesa Mutual Insurance Company  
Lewis D. Whitehead  
*A Generous Person (4)*

**Founder: \$50,000 - \$99,999**  
A. E. McKenzie Company Limited  
Bank of Montreal  
Brandon Area Community Foundation  
Brandon University Faculty Association



## Order of the Sheaf...continued

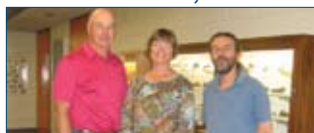
### Brandon University Students' Union



^ The Brandon University Students' Union

### Donald R. Burns & Louise Berlin

Canadian Natural Resources Ltd.  
Canadian Pacific Limited  
Cargill Grain Limited  
Carolyn Sifton Foundation Inc.  
Certified General Accountants Association of Manitoba  
Dr. William '46 & Patricia '45 Chefurka  
Chevron Canada Resources Ltd.  
Convergys Corporation  
Dr. Samuel Corrigan  
Jean C. Downing '41  
Dr. Paul Duprat  
Kathryn M. Gardner '34  
J. Hargreaves-Mawdsley  
Ron F. Helwer  
Glenn '70 & Linda '70 Hockley



^ Glenn and Linda Hockley (left and centre) with Geology professor, Peter Adamo.

### Julie Ann A. Kniskern

Dr. Leo & Shirley Liu  
Manitoba Blue Cross  
Manitoba Education & Training  
Manitoba Telecom Services Inc.  
Richard '60 & Verda '55 McDonald



^ Verda and Richard McDonald (left and centre) with BU President Louis Visentin.

### Dr. Thomas H.M. '40 & Beryl'44 McLeod

David Moxley  
The National Centre for Crisis and Continuity Coordination  
Jim Reynolds  
Dr. John E. Robbins '74  
Philippa K. Saul '41  
Dr. Benjamin Shore  
Lawrence Stuckey '97  
Adam Sus  
Trenchline Holdings Inc.  
The W. Garfield Weston Foundation  
Whitehead Foundation for Western Manitoba Inc.  
Dr. Jay Te Winburn

### Clark Hall Guild: \$10,000 - \$49,999

AGE Electrical Consulting Ltd.  
AIC Enterprises Ltd.  
A.M.I. Partners Incorporated  
A.U.C.C.  
Agrico Canada Ltd.  
Agrium Inc.  
Alberta Star Development Corp.

Alcan Aluminium Limited  
Sandra L. Armstrong '72  
Associated Canadian Travellers  
BDO Dunwoody (Brandon Office)  
Ray '45 & Barb Bailey



^ Raymond and Barbara Bailey (left and right) with Institutional Advancement Acting Director Cindy Yacysen.

Baker Colony Charitable Trust  
Bank of Nova Scotia  
Dr. Robert Beamish '37  
Giselle Rachelle Beaupre '84  
BelAir Energy Corp.  
Beta Sigma Phi  
Dr. Bill Bigelow '33, '67  
Dr. Kissnerspersad & Nazrah Bindra  
Binkley Motors (1983) Ltd.  
The Birks Family Foundation  
John Blaikie  
Brandon Chamber of Commerce  
Brandon Regional Health Authority  
Brandon Regional Health Center Auxiliary  
Brandon Sun

### Brandon University Alumni Association

Tom & Janie Breneman



^ Dr. Tom and Janie Breneman (centre and right) with BU Foundation President Dr. Jeff Bales.

British American Tobacco (BAT)  
Brockie-Donovan Ltd.  
Dr. Robert & Catherine Brockway  
Dr. William C. & Joan B. '72 Burgess  
Cabot Corp Foundation Inc.  
Cadillac Fairview Corporation Ltd.  
Dr. Finley '50 & Barbara Campbell  
Kenneth Campbell '56  
Canada Life Assurance Company  
Canadian Federation of University Women



^ The Canadian Federation of University Women

Canadian National Railway  
Paul & Yvette Cancade  
Cando Contracting Ltd.  
Castor Lake Holdings Ltd.  
Merilyn D. Chaplin '88  
The Chastell Foundation  
Lee & Barbara '70 Clark  
Pat Coleman '51  
Christine H. Coltart '46  
Connor, Clark & Lunn Ltd.  
ConocoPhillips Canada Resources Corp.  
Reverend Joseph Edward Cooper '19  
Corbett Cibinel Architects  
Dr. Barry Corenblum  
Douglas '61 & Marguerite '71 Crandle  
Donald '38 & Mary Grear

Jeffrey '78 & Patricia '78 Cristall  
Crocus Credit Union Limited  
Crocus Lodge Inc.  
Crown Life Insurance Company  
Crystal Spring Colony  
Patricia L. Cullen  
Dr. Ken Daniels '66 & Faye Douglas '77  
Karl De Paepe  
Shari Decter-Hirst '91 & Dr. Derry Decter  
Paola '94 & Rudy Di Muro  
Disaster Management Conference  
Dofasco Inc.  
Dominion Tanners  
DuPont Canada Inc.  
Irene Dyck  
Steve Dzubinski  
Dr. Joel Edelson  
Reverend Einar Egilsson '37  
Maxine Ellend  
Enbridge Pipelines Inc.  
Dr. John English  
Dr. John C. Everitt  
F.W. Woolworth & Company Ltd.  
Federal Industries Ltd.  
Federated Co-operatives Ltd.  
Feed Rite  
W. Craig Ferguson '50  
Cam '52 & Joy '54 (Barton) Finlay  
Marlene Fitzsimmons  
James G. Forsythe  
Foundation For Registered Nurses of Manitoba Inc.  
Glen Fowler  
GEC Alstom International Canada Inc.  
Dr. Rosanne Gasse  
Gendis Inc. and Associate Corporations  
General Electric Canada Inc.  
GeoLogic  
German Canadian Business Association  
Brian Goldberg  
Margaret E. Goodman '49  
William & Kathleen '72 Gordon  
Marianne Gottardo  
Brian Hakala  
C. J. Hannah-Kayes '95 & Brian A. Kayes '00  
Dr. Gorthwury E. Haque  
T. Garth Harvey  
Teresa Henderson  
Evelyn Hinz  
**Wayne & Erin Holm**  
Hudson Bay Mining & Smelting  
Hudson's Bay Company  
Alice and Donald Hurd  
Dr. Graham Hurlburt  
Kathy Hyndman & David Ford  
IBM Canada Limited  
IHS AccuMap  
Imperial Oil Limited  
Imperial Tobacco Canada Foundation  
Inco Limited  
Kathleen E. Ireland-Findlay '35  
The J. Malcom Brodie Memorial Scholarship  
David Reid Jackson Jr.  
David R. Jackson Sr.  
Kenneth R. James  
The Jewish Foundation of Manitoba  
The Joe Brain Foundation Inc.  
Muriel E. Jollow '26  
Byron E. Jones '32  
Dr. Lawrence & June Jones

Dr. Kevin & Els Kavanagh  
Mervyn R. Keys



^ Mervyn Keys (far right) with BU Faculty of Science representatives.

Dr. Ralph F.B. King  
Kiwanis Club of Brandon  
Kiwanis Club of Winnipeg Foundation Inc.  
Klondike Farms Ltd.  
The Honourable Stanley Knowles '30  
Betty '43 & Hugh J. '43 Knowlton



^ Conservatory students enjoy the piano donated by Betty Knowlton

Jack & Joan Kullberg  
Sheldon Kumer  
Labatt Breweries of Canada  
Labatt's Prairie Region  
Lafarge Canada Incorporated  
Melville Lall  
Sergio & Susan Lee  
Michael & Patricia Leech  
Leech Printing Ltd.  
Dr. Johanna Leseho  
Dr. Peter Letkeman  
Pat Littlejohn  
Lloyd Carr-Harris Foundation  
London Life Insurance Company  
MB Mechanical Engineering Ltd.  
MBNA Canada  
Dr. Chris & Judith '91 Macdonald  
Murray '52 & Betty MacDonald  
Dr. John & Paula Mallea  
Manitoba Teachers' Society  
Manitou Foundation  
Dr. Henry Mantsch  
Manufacturers Life Insurance  
Maple Leaf Foods Inc.  
Sandy Margetts '65  
Maurice Price Foundation  
Douglas F. McArthur '79  
McCain Foods Limited  
Robert '35 & Mary '30 McCulloch  
Dr. Wilfred W. McCutcheon  
Eileen McFadden '53  
McKenzie Seeds Ltd  
Mr. & Mrs. N.K. McKinnon  
Grant McPhail & Dale Severyn  
Margaret E. McPherson '74  
Meighen Haddad & Co.  
Ernest G. '50 & Shirley '50 Miller  
Wayne S. Miller '73  
Doreen Millin  
W. Glen '47 & Eunice M. '48 Milne  
James R. Minions '55  
Monsanto Canada Inc.  
Morguard Investments Limited  
Ray Muller  
The Murphy Foundation Incorporated  
A. Clair & Mildred Murray  
Mutual Life of Canada  
Dr. Mumulla V. Naidu  
David Newman

Dr. Beverley Nicholson '78  
 Garry Nicol '77  
 Leo Nijssen  
 North West Company Inc.  
 John P. Odin '30  
 Owens Corning  
 P.E.O. Sisterhood-Provincial Chapter  
 Brian W. Pallister '75  
 Mike Parnell  
 Trish '84 & Lorne Parobec  
 Bill & Donna Parrish  
 Richard Patmore '34  
 Hazel Patmore-Skuce  
 Dr. William H. & Eileen Paton  
 Sherry L. Peden '04  
 Dr. Donald & Sandra Penny  
 Peridot Corp.  
 Dr. Harold J. & Mary Louise Perkins  
 Dr. Arnold & Nan Pernal  
 Gordon & Diane Peters  
 Dr. Douglas A. Pickering & Jeanne Mills  
 Poco Petroleum Ltd.  
 Pollard Amalco Inc.  
 Portage Mutual Insurance



^ Portage Mutual Insurance

Power Corporation of Canada  
 Provincial Exhibition of Manitoba  
 Dr. Frank J.E Purdie  
 Queen Mary Chapter #3 Order of the Eastern Star  
 Lawrence Racicot  
 Don '49 & Jan Raleigh  
 Bryce Reikie  
 Rice Financial Group Inc.  
 Thomas J. Rice Family  
 Dr. Ron & Gail Richert  
 Dr. Helen Riesberry '42  
 Christopher Riley  
 Burton Robinson  
 Edward Robinson  
**Evelyn Robinson**  
 Darryl Rosenberg  
 Kathleen J. Rowe '34, '70  
 Russell & District Foundation  
 Kimberley Ryan-Nicholls '87  
 S. Davies & Associates  
 Saan Stores Ltd.  
 The Right Honourable Edward Schreyer &  
 Lily Schreyer  
 Dora Ann Scott  
 The Senator Norman M. Paterson Foundation  
 Dr. Meir Serfaty  
 Ian '78 & Heather Sharpe  
 Peggy Sharpe '35  
 Dr. Victor '39 & Phyllis '39 Sharpe  
 Shaw Communications Inc.  
 Ernest K. '51 & Rosa '51 Shaw  
 Sheldon Shore  
 Curt A. Shoultz '80 & Heather A. Coulter '80  
 Shur-Gro Farm Services Ltd.  
 Sir Thomas Cropp Foundation Inc.  
 Don & Glenora Slimmon  
 Ira Smith  
 Wim Smits  
 Society of Management Accountants of MB

Professor Robert Solomon & Dr. Barbara Lent  
 Mr. & Mrs. Michael Sopman  
 John '66 & Diane Spalding  
 St. John's Music Ltd.  
 Didi Stepanek & Dr. Harold Fung  
 Dr. David B. '92 & Ruth Stewart  
 Austin Stoll  
 Marion '40 & Ketut Stone  
 Sun Life Assurance Company  
 Suncor Energy Foundation  
 Sunnyside Colony  
 Dr. Cameron Symons  
 Laura G. Taylor '28  
 John J. Teunissen  
 Alice E. Theodorou '39  
 George E. Thorman '34  
 Toromont and Cat  
 Total Eye Care  
 TransCanada PipeLines Limited  
 Victoria Inn  
 Vionell Holdings  
 Dr. Louis & Mary Visentin  
**Daphne Wagner '79 & David Green**



^ Daphne Wagner (top left) with her family.

Dr. Lorne Watson '93  
 David S. Weiss  
 Dr. John Welsted & Kathleen Georgison  
 Westcoast Energy Inc.  
 Westman Communications Group  
 Westman Communications Group/880  
 CKLQ/94.7 Star FM  
 Westoba Credit Union Ltd.  
 Dr. Lynn Whidden '67  
 Dr. Jeffrey Williams & Edith Mary Smith  
 Wingham Colony Farms Ltd.  
 Wolfrom Engineering Ltd.  
 Dr. Don Wright  
 Dr. Norma Wylie



^ Dr. Norma Wylie (left)

Xerox Canada Incorporated  
 Dr. May Yoh  
 Ivy '54 & Norval Young



^ Ivy and Norval Young (left and centre) with Cindy Yacyshen, Acting Director of Institutional Advancement.

A Generous Person (2)

**Friend: \$5,000 - \$9,999**  
 1266896 Ontario Inc.  
 Doug W. Adams '87  
 Joy A. Adams Bauer '81  
 Ag Quest Inc.  
 Agricore United  
 Air Canada

Blanche Allison  
 Dr. C. Dennis Anderson '64  
 Dr. Clifford W. Anderson  
 Grant M. Andres '87 & Barbara L. Fullerton '88  
 Dr. Robert & Mary Annis  
 Elizabeth J. Armstrong '69  
 Assiniboine Consulting Group Ltd.  
 B. A. Robinson Co. Ltd.  
 B.U.N.T.E.P.  
 Dr. Jeff Bales & Dr. Trudy Corbett



^ Dr. Jeff Bales and Dr. Trudy Corbett

Ellen V. Bateman  
 Lloyd F. Beckley  
 Ben Wiebe Construction  
 Dr. Michael Blonar  
 Kathleen Addrene Bowler '32, '33  
 Patricia '71, '76 & Cliff Bowslaugh  
 Brandon Elks Lodge #14  
 Brandon Rotary Club Westman Foundation



^ The Brandon Rotary Club

Dr. Cal & Norma Bristol  
 Gerald R. Brown '56  
 Heather Bruce  
 Barrie '57 & Dorothy '56 Burch  
 Linda '69 & Edward '77 Burridge  
 Gerald Butler '63  
 Canada Safeway Limited  
 Canadian Airlines International  
 Canadian Motors Ltd.  
 Dr. Deborah Caplan  
 Dr. Glen '77 & Heather Carruthers  
 Cascade Colony Farms Ltd.  
 Centra Gas Manitoba Inc.  
 Dr. Francis Chaplin  
 Jean Chase '30  
 Christie's Office Plus  
 John Chzyk  
 Clearwater Colony Farms Ltd.  
 Clare '59 & Darlene Coburn  
**Dr. Glenn E. Cockerline**  
 Gerald Collyer '68  
 Dr. Gerald & Sandra Coueslan  
 Crane Steel Structures  
 Arthur I. Cristall  
 Diane Cristall  
 Eleanor Cristall  
 Ferne Cristall  
 Neil J. Cristall '82  
 Leon Dadoun  
 Dafa Enterprises Limited  
 Cam Dalmyn  
 Dr. James W. Darlington  
 Decker Colony  
 Margaret Alison L. Doak '63  
 Isabelle Douglas  
 Dr. Harold Fung Medical Corp.  
 Dr. Gerald Dueck & Dr. Barbara Gfeller  
 J. Kelly Edmison  
 Marion Edmison '35

Margaret Eggleton '41  
 Neil R. Enns '96  
 Dr. Werner Entz  
 F.K. Morrow Foundation  
 Fairholme Colony  
 Thomas F. Fenwick  
 Assiniboine Consulting Group Ltd.  
 Gladys H. Fisher  
 Robert J. Ford  
 Eric Foss  
 Bill Fotheringham  
 Genetically Advanced Pigs  
 Gerdau AmeriSteel  
 Glenway Colony Farms Ltd.  
 Dr. George K. '64 & Mary '42 Gooden  
 Anna Grandhi  
 Guild Insurance Brokers Inc.  
 H.J. Heinz Company of Canada  
**Murray & Jean Hannah**  
 Dr. James Hardy  
 Lillian Harris '84  
**Harrison McCain Foundation**  
**Dr. Wayne & Barbara Harrison**  
 Dr. Gordon D. Hasick  
 Heathbridge Capital Management  
 Ray Hoepfner '91  
 Hollinger Incorporated  
 Winnifred Holmes  
 Dr. Peter Hornern  
 Gordon & Suddi - June Hubbard  
 Patricia Hurlburt  
 I.C.I. Canada Inc.  
 I.O.D.E. Teck Chapter  
 Inco Limited Manitoba Division  
 International Brotherhood of Electrical  
 Workers Local 2034  
 Dr. Ronald S. Jackson  
 Jake & Judith Janzen  
 John Labatt Foundation  
 Dr. T. Andrew '45 & E. Zenella '45 Judson  
 The Keg  
 Stefan Kossak  
 Nicola Kozakiewicz  
 Nina Kozakiewicz '65  
 Kullberg's Furniture Limited  
 Dr. Y. L. Jack Lam  
 Scott & Louise '91 Lamont  
 Don & Donna Leech  
 Margaret A. MacKenzie '38  
 Reverend Archie J. '33 & Kathleen MacLachlan  
 MacLean Hunter Limited  
 Norman W. MacLeod '48  
 Gordon C. MacPherson  
 Colin Mailer '65, '68  
 Manitoba Arts Council  
 Manitoba Arts Gaming Fund  
 Manitoba Association for Resource Recovery Corp.  
 Manitoba Community Development Corp.  
 Assoc. Inc.  
 Manitoba Federation of Labour  
 Manitoba Government Employees' Union  
 Manitoba Hockey Players Foundation  
 Manitoba Teachers Society Brandon Association  
 Manitoba Women's Enterprise Centre Inc.  
 Masonic Grand Lodge of Manitoba Ancient  
 Free and Accepted Masons Masonic Past  
 Masters Association  
 Mazer Implements



## Order of the Sheaf...continued

Dr. Mervin A. McArthur  
 Margaret McCurdy  
 Gordon & Rosalind McDiarmid  
 McDonald's Restaurants of Canada Limited  
 Marie McGinn  
*Dr. Roderick McGinn*  
 David '69 & Sharon '69 McInnes  
 The McLean Foundation  
 Dr. George & Sandy McMaster  
 J. Trevor McNeely '55  
 Shirley McNeely  
 Alison McNeill-Hordern '87  
 Dr. Neil McQuarrie & Sherry M. Wallman '74  
 Maico Meier  
 Mercury Graphics  
 Kathryn & Robert Merrett  
 Garry '65 & Colleen '66 Miller  
 Ronald S. Moore  
 Dr. William R. Morrison  
 Jack '51 & Lois '51 Muir  
 Dr. & Mrs. W. E. Myers  
*Judge Rodney Mykle '66 & Lori McBeth*  
 New Haven Colony Charitable Trust  
 Newdale Colony Ltd.  
 Dr. Kenneth Nichols  
 Phillip & Judy Noonan  
 OBO Outdoor Box Office Ltd.  
 Odanah Farms Ltd.  
 Order of the Eastern Star Grand Chapter  
 of Manitoba  
 Order of The Royal Purple  
 P.E.O. Sisterhood Chapter U  
 Dr. Doreen M. Pachal '47  
*Dr. Alex Pappas '86*  
 Parrish & Heimbecker Ltd.  
 Paul's Hauling Ltd.  
 Polish Gymnastic Sokol Association  
 Poplar Point Colony Farms Ltd.  
 Harley D. Potter '46  
 Harold J. Pullaw '74  
 R.C.M.P. Veterans Association  
 Frances E. Racher '89  
 Reader's Digest Foundation of Canada  
 Redfern Farm Services  
 The Registered Psychiatric Nurses' Foundation Inc.  
 Robert Richardson Jr. '93  
 Riverbend Colony Charitable Trust  
 Marjorie & Alfred Rogosin  
 Rotary Club of Brandon  
 Royal Oak Inn  
 Royal Trust Co.  
*Lorraine G. Rozak '89*  
 Margaret Samson  
 Dr. Joseph Sawchuk  
 Sears Canada Incorporated  
 Earle Selwood  
 Shell Canada Limited  
 Silverwinds Colony  
 Abe Simkin  
 Saul Simkin  
 Sioux Valley Dakota Nation  
 Dr. Roger & Ann Smith  
 Alice Smythe  
 Morten Sorenson  
 Springhill Colony Farms Ltd.  
 Dr. Kam Srikameswaran  
 Star Lite Colony  
 Joyce R. A. Taylor '71  
 Jack Tennant

Peter & Marlies Thiessen  
 Gayle & George Thomas  
 Dr. Douglas Thompson  
 Barbara & Marvin Tiller  
 UMA Engineering Ltd.  
*Uniglobe Clark Travel Inc.*  
 United Steelworkers of America  
 Vector Construction Ltd.  
 Vermillion Colony  
 W. Homburger Limited  
*Jean M. Walsh*  
 Alphonso & Sybil Weekes



^ Alphonso and Sybil Weekes

West-Man Dental Group  
 West-Man Multicultural Council  
 Western Management Consultants  
 Westman Sport Association  
 Sharon L. Wickman '70  
 David Wilkie '82  
 Howard '40 & Thelma Williams  
 Windy Bay Colony Farms Ltd.  
 Winkler Economic Development Corporation  
 Dr. Westley '44 & Helen Wong  
 Frances Yeomans '19

### Member: \$1,000 - \$4,999

A & W Restaurant  
 AWM Productions Ltd.  
 Catherine Ackland '38  
 Carolina Acosta-Gonzales  
 Acres International Limited  
 Peter J. Adamo '00  
 Donald N. Adams '54  
 Dr. K.A.H. Adams '55  
 Donna '61 & Ross Adrian  
 Donna J. Agnew '52  
 Air Farce TV10 Inc.  
 Amoco Canada Petroleum Company  
 Brenda L. Anderson '64  
 Doug '89 & Valerie Anderson  
 Stewart & Doreen Anderson  
 Susan Andison '68  
 John M. Andrews '52  
 Mary Andrusyszyn  
 Anna Resources Ltd.  
 Charles B. Armstrong '75  
 Harlaine Irma '48 & Norman Armstrong  
 Dr. Helen Armstrong  
 Merrideth D. Ashcroft '81  
 Atom-Jet Industries Ltd.  
 Audrey S. Hellyer Charitable Foundation  
 August Insurance Agency Ltd.  
 Kerry Auriat '87 & Rhonda Grierson-Auriat  
 Verna Averill '50  
 Ayerst Organics Limited  
 BMHC Nurses Alumni  
 Wilbert Babe '32  
 Dr. Beverley Bailey  
 S. Balasubramaniam  
 Barker's Agencies  
 Joseph Barletta

Ian '62 & Beverley '60 Barnes



^ Beverley and Ian Barnes

Karen F. Barteaux '91  
 Clive Bate '54  
 Bruce Bateman '69  
 Murray '65 & Elmira '74 Bateman  
 Doreen Beaupre '88  
 Beaver Bus Lines  
**Dr. Kenneth & Heather Beesley**  
 Dr. Carl & Linda Belke  
 Dr. George A. Bell '56  
 Reverend William R. Bell '42  
 Kenneth '65 & Lois Bellas  
**Dr. Kenneth '75 & Josie '79 Bessant**  
 Viola F. Best '39  
 Kenneth & Vivianne Bicknell  
 Guy Bieber  
 Bieber Securities  
 Mansel & Anna Binkley  
 Vic & Mae Binkley  
 George J. Birger  
 Bill Black '52  
 J. Errol Black '65  
 John Blackwood '54 & Lorraine Andras  
 Kenneth W. Blair '72  
 James U. Blanchard III  
 Dr. Arthur Blue  
 Body Force Fitness  
 William '78 & Kathy Bolley  
 Elaine A. Bollman '71  
 Boretta Construction Ltd.  
 Darcy & Dr. Arthur Bower  
 Clifford '39 & Verna Bowes  
 Keven & Dawn Bowie  
 Dr. Anne Bowker  
 Bradley Sand & Gravel Ltd.  
 Alicja & Jan '73 Brancewicz  
 Brandon Community Development Corporation  
**Brandon Community Orchestra**  
 Brandon Downtown Business  
 Brandon Economic Development Board  
 Brandon Film Festival  
 Brandon Lions Club  
 Lon F. Brandon '69  
 Brandon Music Festival  
 Stewart A. Brandon  
 Brandon University Geography Department  
 Brandon University Psychology Society  
 Brandon University School of Music  
 Shawn D. Brandt '91  
 Christopher Brawn  
 Gary '67 & Angela '67 Brawn  
 Dr. Garth Bray '57  
 Gary T. Brazzell '55  
 Olive Bremner  
 Helen E. Bridgett '23  
 Brightstone Colony Farms Ltd.  
 Patricia A. Britton '87  
 Doneta & Harry Brotschie  
 Dorothy Brown  
 Dr. John Melville Brown '33  
 Florence M. Brownridge '49  
 Brown's Drug Store Limited

Barton C. Bruce '51  
 F. Richard '82, '91 & Doreen Bruce  
 Thomas O. Bryan '74  
 Brenda Bull  
 Budget Rent a Car  
 Burger King  
 Dr. Hans W. Burmeister  
 Gary Burnett  
 Busdevelop Corp.  
 Clifford S. Butler  
 Reverend Michael Buyachok  
 Drew Caldwell '82  
 James L. Callander '58  
**Brent E. Campbell '89**  
 Joanne & Gordon Campbell  
 Robert D. Campbell '74  
 Campbell Soup Company Limited  
 Canada Post Corporation  
 Canadian Labour Congress  
 Canadian Petroleum Tax Society  
 Nonny & Carolyn Cancade  
 Canfor Corporation  
 Dahl & Mary Cannons  
 Carberry Music & Arts Festival  
 Dr. W. C. & Charlotte Carbno  
 Alma E. Carnochan '72  
**Dr. T. Patrick & Mary-Jo Carrabré**  
 Glenn R. Carradice '86  
 Dr. Ewen P. Carruthers '37  
 Garth S. Chalmers '42  
**Henry Champ & Karen DeYoung**  
 Bill & Sheila Chapman  
 Linda J. Chernenkoff '77  
 William J. Chester '78  
 Dr. Anthony Chow '64  
 Christian Stewardship Services  
 Lorna '64 & James Clark  
 Clearview Colony Ltd.  
 Robert A. Clement '30  
 Clemmensen's Movies & More  
 Dr. Sherril Colert  
 Colonial Inn  
 Esther L. Comber '74  
 Compass Group Canada  
 Lydia '79 & Jacques Comty  
 Confederation Life Insurance  
 Campbell Connor  
 Countryside Equipment  
 John P. Crabb  
 Boyd & Krista Craig  
 Bruce '76 & Cheryl '76 Craig  
 Caroline B. Cramer  
**Edna M. Crane '49**  
 Ernest E. Criddle '58  
 Daniel Cristall '43  
 Faith Cristall  
**Crocus Girls Volleyball**  
 Cumming & Dobbie (1986) Ltd.  
 Dr. William R. Currie '69  
 Colleen Cutschall  
 D.W. Friesen & Sons Ltd.  
**Dr. Andréé Dagenais**  
**Helen A. Dalling**  
 Florence Dalman  
 Lois M. Daly '48  
 Dr. Bud & Flora Danylchuk  
 Malcolm W. Davidson '63  
 Clair '64 & Valerie '58 Davies  
 Eric Davies

Willa G. Davies '31  
Davis + Henderson Intercheques  
Margaret L. Davison '50  
Larry & Barbara Dawson  
Dr. Michael B. Decter  
DeFehr Foundation Inc.  
T. E. Deller '79

**Dr. Walter W. Deller '76**

Delta Kappa Gamma Society  
Carole E. Dence '64  
Frank & Debby '03 Deniset  
Allan Denton  
Gregory Desrosiers & Donna Mark  
Marc & Doreene Desrosiers  
Anne L. Dickson '81  
Dr. Ian '58 & Donna '60 Dickson  
Rt. Honourable John Diefenbaker  
Les Diehl

Merv Dillabough  
Shirley M. Dilley '32

**Helene E. Dillon**

Disaster Recovery Information Exchange  
Doig's Store Limited  
Dominion Malting Limited  
James '59 & Jill Donaghy  
Sandra G. Donin '60  
Ton Donkersloot  
Irma M. Douglas  
Eric S. Dowsett '82  
Dr. Johan & Suzanne du Plooy  
Dr. Henry '82 & Shirley Duckworth  
Anne Dunfield '37

**Kerry DuWors**

Greg '86 & Shawna '88 Dyck  
Dynamic Fund Foundation  
William P. Eames '50  
Ross '69 & Delma Eastley  
Donald '64 & M. Louise Edwards  
Russ & Edna Edwards  
EECOL Electric (Sask.)  
Alan & Barbara Ehnas

**Dr. James Ehnas**

Dr. Alvin & Phyllis Elliott  
Elm River Colony Farms Ltd.  
Dr. Clayton '49 & Dorothy Elston  
Dr. Emmett '71 & Karen '72 Elves  
Ruth A. Emisch '75  
Evancic, Perrault, Robertson  
Adelene M. Evans  
Dr. William Evans '59  
Anne R. Fahrig '47

**David '73 & Inez Fairlie**

Sean Farnell  
Norma & Robert Farquharson  
Ann Fedorkiw  
Mari-Ann Fedorkiw  
Nelda Fedoruk  
Phyllis M. Ferguson-Bottomer '73  
Albert Ferris  
Edward & S.E. Finch

**Karen E. Fingas '68**

Charlotte M. Finlay '37  
Dr. Cora L. Fisher '62  
Marjorie Fitton '31  
Dr. Robert & Janice '85 Florida  
Fred T. Foo '48  
Reg E. Forbes  
Forman Honda  
Byron Forsyth

Ronald '74 & Dorine '74 Fowke  
Fowler Pontiac Buick GMC Ltd.  
Frances H. Fraser '57  
William A. Fraser '51  
Freightliner Manitoba Ltd.  
William J. Friesen '58  
Dr. Lorraine Frost  
Bryan J. Fuhr '67  
F. Joan Garnett '52  
Mike Geletchuk '71  
General Window Products of Canada Limited  
Vern C. Gilbertson  
Dr. Robin & Ruth Giles  
Barbara A. Gill  
Glenboro Pharmacy Limited  
Clifford L. Glenn '56  
Jocelyn H. Godolphin '67  
Albert '54 & Marion Gogol  
Good Hope Colony Farms Ltd.  
Margaret C. Goodale '37  
W. Donald Goodfellow '61  
Goodon Industries Ltd.

**Dr. Marvin J. Goossen**

Allen K. Gordon '74  
Charles E. Gorrie '69  
Philip D. Gosselin  
Tena I. Gough '49  
Don & Yvonne Graham  
Dr. Gerald '55 & Freida Graham  
Isabelle J. Graham  
Grand Valley Mechanical  
Cordell '71 & Elizabeth '69 Grant  
Dr. James Gray '74  
Green Acres Colony  
The Green Spot  
Doris I. Greenshields '51  
Greenwald Colony  
James E. Gretz '64  
Grey Goose Bus Lines Ltd.  
Grey Goose Corporation Ltd.  
Dr. Scott & Mrs. Sheilagh Grills  
Dr. Agnes Groome '38  
Adam '84 & Cheri '85 Grosjean  
Edith R. Gunning '38

**Carolyn D. Gwyer '95**

Dr. Pandelis & Helga Halamandaris  
Hugh '61 & Monique Halliday  
David '61 & Peggy Halstead  
Gertrude Hamilton  
Gladys A. Hamilton '41  
Peter D. Hamlyn  
The Happy Corker  
Beverley Harris  
Jeffrey W. Harwood '73  
Dr. William '43 & Mrs. Phyllis Harwood  
Phyllis Hatch  
Allen '55 & Myrna Hattie  
Haven Colony  
Norman Hedison '54  
Eric '78 & Michele '76 Hemmerling  
W. B. Henderson  
Carol A. Hendrickson  
Peter '49 & Jean Hendry  
Dr. Richard Henley  
Donald R. Henry  
Evelyne B. Herman  
Barry '60 & Ellen Heselgrave  
Hewlett-Packard (Canada) Co.  
Gwen Hiller '45

Stewart B. Hobbs '55  
Daniel Holm & Darene Yavorsky  
Dennis V. Holmlund '62  
Homewood Colony Farms Ltd.  
Myles '91 & Bonnie Hubbard  
Walter Huculak '55  
Catherine '49 & Ray Huene  
Alma Hughes  
Dr. Michele Hultzer  
Francis J. Humphries '48  
Humpty's Restaurant  
Dennis A. Hunt '83  
Hunt Miller & Combs  
Dr. Fiona Hunter  
Huterville Colony  
I.O.D.E. Diamond Jubilee (1960) Chapter  
I.O.D.E. Provincial Chapter  
Dr. Pat Ilott '77

Independant Order of Foresters  
Industrial Alliance Pacific Life Insurance  
Company

Esther A. Inglis  
Intercanada Communications  
International Association of Fire Fighters  
Local 803

Inventronics Limited

Jean L. Jack '94  
Dr. D. Garth Jackson '77  
Jacobson & Greiner  
Joan Parker Realty  
Dr. Martin W. Johns '72  
B.L. Johnson  
Stuart T. Johnson '66, '69

Michelle Joubert  
Dr. Angus '51 & Devona Juckes  
Kanaris Enterprises Limited  
Gerald Kanary

**Catherine Kay '64**

Carmen Kazakoff-Lane & Andrew C. Lane '88  
Kelleher Ford Lincoln  
Patrick '57 & Joan Kelleher  
Christopher W. Kennedy '76  
J.E. & Virginia Kennedy  
Marshall Kennedy '63 & Donna  
Zimmerman-Kennedy '66  
Murray '88 & Leila Kerr '89  
William A. Key '73  
Keystone Colony

Dr. K. Glen & Evelyn '64 Kidd  
The Killarney Foundation Inc.  
Edna King  
Kirkup Plumbing & Heating  
Henry '66 & Judith Klassen  
Phillip '33 & Eulala Klenman  
Edna H. Knock '76  
David S. Knowles  
Kodaly in Manitoba  
Andy '58 & Berthe Kossak  
Yasmin Kossak  
Yolanta Kossak

Marie I. E. Kullberg-Brown '68  
John '37 & Verna M. Labelle  
Laidlaw Transit Ltd.  
Dorothy Lake  
Lakeside Colony Ltd.  
Alexandra V. Lapko '75  
Greg '79 & Kathleen '77 Lawson  
The Lee Foundation  
Marion H. Lepkin '44

Troy Leslie  
Dr. & Mrs. R. Mervyn Letts '61  
Michael Levy  
David '90, '92 & Cindy Lewis  
Dr. James G. Lindsay '46  
Beverley J. & R. Fletcher Linklater  
Dr. R. Fraser & Joan '76 Linklater  
Helen M. Lisowski '80  
Richard '94 & Taja Lonstrup  
Louise Loots & David Hopkins  
**Donna A. Lowe '91, '02**  
Dr. Andrew & Margaret Luer  
Russell W. Lusk '65  
M.C.M. Architects Inc.  
Mabel Brandon Memorial Committee  
James D. MacDonald  
Kevin D. MacDonald '77  
Mary M. MacDonald '25  
Donald R. MacKay '39  
Grace Magnacca  
Manitoba Bar Association

**Manitoba Chamber Orchestra**

Manitoba Department of Education  
**Manitoba Developmental Centre**  
Manitoba Hockey Foundation Inc.  
Manitoba Law Foundation  
Manitoba Music Educators' Association  
Brandon Branch

Manitoba Pork Marketing Inc.  
Manitoba Pulse Growers Association  
Manitoba Women's Institute  
Helen M. Mann '28  
Dr. Brian '68 & Lynne Manns  
Mano's Restaurant & Lounge  
John & Wilma Mantell  
Maple Grove Colony  
Marlin Travel Service

Eva Marshall  
John W. Marshall '69, '73  
Gary C. Martin '59  
Masonic Lodge Scottish Rite Freemasonry  
Dr. T. K. Mathew  
Jack '68 & Wreatha '70 Maw

**Brian Mayes & Dr. Alison Marshall**

**Geraldine Mayes**  
Edward '69 & Marion '70 Mazer  
Patricia E. Mazer '79  
John D. McArthur '57

**Nola M. McBurney '63**  
McClure-Van Achte Limited  
Mark A. McCowan '64  
Dr. Robert McDougall '86  
David '57, '65 & Linda '59, '68 McDowell  
Dorothy F. McDowell '33  
Dr. Sumathi '84 & Jeffrey McGregor  
Dr. Fred McGuinness  
Sharon '69 & David '69 McInnes  
Garry R. McIntosh  
Jean McIntosh '56  
Maureen E. McIntyre '72

The Honorable W. John McKeag  
Neil '52 & Irene McKellar  
Brian J. McKenzie '61  
Irene McKenzie '34  
James McKibbin '53  
Dr. Charles '52 & Dianne '53 McKinnon  
Frank '55 & Pat McKinnon



## Order of the Sheaf...continued

### John & Eileen McLachlan

Barrie T. McLeod '55  
Garfield W. McMahon '52  
James E. McManes '75  
Charles A. McMillan '66  
Dr. Kenneth '52 & Helen McNeely  
Ivey '51 & George McNeill  
Dr. Murray McPherson '43  
Florence J. McQuarrie '63  
Dr. Ed '37 & Mrs. Mary '38 McTavish  
Dr. Marilyn L. McTavish '66  
A. C. McWilliams  
George Melnyk  
James W. Mendenhall  
Katherine & William Metelski  
Dr. Roberta '74 & Barry '76 Midwinter  
Millbrook Hutterian Brethren, Inc.  
A. B. Miller '64  
Edna Miller  
Brent '71 & Renatta '76 Mills  
Earl T. Mills '37  
Dr. Isabelle Mills '64  
James G. Mills '64  
Millshof Colony Farms Ltd.  
Carol M. Milne '71  
A. Edward Milton  
F.C.D. Milton  
Barry Minish '70  
Meta E. Mischpeter '28  
Helen '55 & Kenneth Mitchell  
Terence & Colleen Mitchell  
Thomas '70 & Bonnie Mitchell  
Mitrou Agencies Limited  
Grace E. Moore '33  
Morguard Real Estate Investment Trust  
Elizabeth Morrison  
J. Kenneth Morrison '51  
Dr. Morris K. Mott  
Mr. Submarine Limited  
Dr. A. Hamid Mumin  
Brad Munn & Cyndi Adams-Munn  
Dr. John Murdoch '80 & Sharon Davis-Murdoch  
Murray Chev Olds Cadillac Ltd.  
Florence Murray  
Herbert '59 & Arlene Murray  
Dr. Bob & Joan Myers  
Charles V. Myers '32  
Dr. Gordon & Christy Myers-Rust  
**Kristen A. Myers '04**  
Nancy Neil-Noonan '82  
Dr. James Nelson '42  
Maria C. Nelson '25  
Netley Colony Ltd.  
New System Store (Brandon) Ltd.  
New York Life Insurance Co.  
Kathleen M. Nichol '73, '92  
**Murray D. Nichol '92**  
Arnold J. Nicholls '64  
Dr. Beverley '78 & Sylvia Nicholson '79  
Judy Nixon  
Dr. Laurence F. Nixon  
Sheila L. Nixon '35  
Dr. Arnold Novak '69  
Oak Bluff Colony  
Oak River Colony  
Philip P. '89 & Michelle O'Brien-Moran  
**Cody E. Obst '01**  
**Brian E. O'Donnell '69**  
Paul O'Driscoll '79  
Tom & Pat O'Flanagan  
Ingemer Ohlsson

Phyllis E. Ohs  
O'Kelley's Restaurant  
W. A. Olson '69  
Dr. David Oppen '76  
David W. Organ '49  
Eva H. Orr '72  
Mary E. Osborne '78  
The Oshawa Group Limited  
Reta C. Owens '74  
P.E.O. Sisterhood Chapter R  
Shirley J. Paine  
PanCanadian Petroleum Limited  
Dr. Clare Pangman '63  
Robert '78 & Angela '84 Pappas  
Paterson Patterson Wyman & Abel  
Patill Insurance Agencies Ltd.  
Patmore Nursery Sales  
Jean E. Paton '53  
David Paul  
George W. Peary '61  
Olive G. Pease '34  
Sydney Pechet '30  
Dr. Evan H. Pepper  
Dale V. Peters  
Dr. Douglas Peters '50  
Irene '57 & Wayne '59 Pettapiece  
Lee A. Pettigrew  
Lisa R. Philpott '80  
Pik-A-Dilly Trailer Sales  
Pizza Express  
Pizza Hut  
Margaret & Robert Plaxton  
John W. Popkin '29  
Douglas W. Pople '90  
PPG Canada Incorporated  
PPG Canada Incorporated (Brandon)  
Morris Predinchuck  
Marjorie R. Pringle '55  
Peter Prokaska '53  
Mary-Ella Proven '76, '78  
Dr. Robert & Lorraine Prus  
Public Service Alliance Canada  
William & Brenda Pugh '70  
John D. Purvis '53  
Alberta L. Pybus '33  
RBC Dominion Securities Foundation  
Radics Chrysler Plymouth Jeep  
Dr. Douglas Ramsey  
Mary E. Rand '32  
Ready Oxygen Ltd.  
Red River Equipment Inc.  
Ralph Redfern  
Dr. Gordon Reimer  
Revelstoke Companies Ltd.  
**Richard Flohil & Associates**  
Robert F. Richards  
Ridgeville Colony Farms Ltd.  
Lewis A. Riley  
Riverdale Colony  
Dr. Leonard F. Rivers '63  
Margaret M. Roberts '41  
Ian & Dorothy Robertson  
Renee Robinson '91 & Gordon Chester  
C.M. Robson  
**Dr. Michaele Roddy**  
Rogers Shared Services  
Russell '70 & Marjorie Roney  
Dr. Lewis C. Rose  
R. Wayne Rosenman '67  
Dr. Linda L. Ross  
Rotary Club Westman Foundation

Dr. Richard C. Rounds  
Dr. Don Rousell '52  
Roy Johnston & Co.  
Margaret I. Roy '62  
Royal Canadian Legion Dominion Command  
Royal Canadian Legion Manitoba and  
Northwestern Ontario  
Royal Canadian Legion No. 23  
Royal Lepage Charitable Foundation  
Royal Trust Co. of Canada  
Algot I. Runeman '21  
John W. Russell '66, '69  
J. Elaine Rust '58  
Marian E. Rutt '49  
Alix E. Ryles '42  
S. H. Properties Ltd.  
S.P.E.B.Q.S.A. Inc.  
Troy H. Sambrook '92  
Samson Engineering Inc  
T. John E. Sandborn '74  
Sapsuto Inc.  
Saskatchewan Music Educators Association  
Ravishankar Sharma '84  
Shelter Canadian Properties Ltd.  
Sherritt Gordon Mines Ltd.  
**Shoal Lake Veterinary Clinic**  
Shoppers Mall Brandon Merchants Association  
David K. Shuttleworth  
Allan & Judy Kehler Siebert  
Silver Winds Colony Ltd.  
Dr. Harold Silverman  
Claribel Simkin  
Richard '96 & Isobel '88 Simons  
Barton J. Sisk '72  
Al Sivertson  
Hazel D. E. Skinner  
Dr. James M. Skinner  
Dr. Sheri-Lynn Skwarchuk  
Agnes E. Smith '71  
Barbara M. Smith  
Elaine M. Smith '59  
Dr. Murray & Sally Smith  
Smooth Movers  
Allen '67 & Myrna '68 Snart  
Michael Spack  
Dr. Edward Speers '43  
Springfield Colony  
St. Augustine of Canterbury Roman  
Catholic Church  
Dr. Christoph Stadel  
Standard Life  
Garth Stanley & Nancy Constance  
Dr. Nancy Stanley '65 & Lyle Baker  
David Staples '79 & Merrideth Ashcroft '81  
Starland Hutterian Brethren, Inc  
Gordon M. Steene '71  
Douglas G. Steeves  
Agnes M. Stephenson '50, '56, '61  
Fern Stevens  
Wesley Stevens  
Roma M. Stevenson  
Heather M. Stewart '58  
Scott K. Stewart '85 & Paulette Kelly

E.W. Stinson '48  
David W. Stone  
William Stordy '22  
**Iris E. Storie**  
Jerry T. Storie '72  
George J. Strang '55  
Reverend George W. Strong  
James K. Struthers '53  
**Donald '50 & Elizabeth '72 Sumner**  
William A. Sutherland '51  
**Christine M. Szabo**  
T.A.W.L. Group Winnipeg Inc.  
Elizabeth Tan '87  
Clive R. Taylor '70  
Garth R. Taylor '43  
**Dr. Marion & William Terry**  
Chester S. Tesarowski  
**Dr. Kathryn Tessier '84**  
Doreen Thomas  
Garth H. '48 & Iris Thomas  
Patricia C. Thorn '64  
Thunderbird H.B., Inc.  
Eleanor '64 & Bob Tilton  
Dorothy C. Tinline '42  
Husein Tjahjadi  
Albert R. Tolton  
Helen A. Toms '35  
Toronto Blues Society  
Fred Trapp  
Iris Tressel  
**Dr. Michael & Carol Turabian**  
Joyce Tureski '74  
Dr. Arnold '59 & Glenyce '56, '59 Tweed  
Two Farm Kids  
Bryan Tyerman '72, '74  
Dr. Earl '46 & Margaret Tyler  
Howard '25 & Alma Umphrey  
Valley View Colony Farms Ltd.  
Anthony J. Van Berkel '76  
Varsity Eye Centre  
Ruth Vasconcelos '71  
Ross '31 & Dorothy Vasey  
Via Rail Canada Incorporated  
Victoria Esso  
Haroldur V. Vidal  
Virden Area Foundation Inc.  
WGI Westman Group Incorporated  
**Dr. Janice & Dr. Bruce Waddell**  
**Jeanette L. Walker**  
Sherry M. Wallman '74  
Dr. Norma Walmsley '88  
Velma M. Wankling '50  
Kathy Warrington  
Margaret E. Watt '45  
We Care Home Health Services  
**Carol Wells**  
Edna I. Wells '85  
John '71, '82 & Kathy '67, '77 Welsh  
Maxine Wenger  
Westburne Plumbing & Waterworks Inc.  
Paul S. Westdal  
Western CA Services Association  
Western Cheque Printers  
Western Manitoba Philharmonic Choir  
Western Medical Clinic Medical Corp.  
Wheat City Concrete Products  
Frances M. Whidden  
David W. Whistle '90  
Whiteshell Colony Farms Ltd.  
Averill M. Whitfield '61  
Lelonie M. Whitmore '62

Marlene E. Wiens '82  
 Winnifred Wightman  
 Dr. Catherine L. Wilkie '73  
 Margaret L. Wilkie '70  
 Wilkins-Tureski: David Tureski Memorial Fund  
 at the Strategic Charitable Giving Foundation  
 Dr. C. Renee Will  
 Dr. Gordon '55 & Renate Williams  
 Romona U. Williams  
 James A. Williamson  
 George '57 & Marlene '56 Willis  
**Dr. Charles P. Wilson**

Horace P. Wilson '31  
 Russell Wilson  
 Christine Winkler  
 The Winnipeg Grenadier  
 Winnipeg Jets Booster Club Inc  
 Dr. Dion Wiseman '91  
 E. Wolverton  
 Helen Wong  
 Dr. Westley D. Wong  
 Warren Wotton  
 Dr. Janet Wright  
 Wyeth-Ayerst Canada Inc.  
**Ida M. Wyllie '50**  
 H. Newton Yeomans  
 York Tire (1988) Ltd.  
 Dr. Harvey '55 & Ginger Young  
 Ivy '54 & Norval Young  
 Zeke's Quality Jewellers Ltd.  
 Zenith Paving Limited  
**Erlin Zurawski**  
 A Generous Person (6)

### New Endowments in 2007

The Al and Bee Wagner Bursary in Music  
 The Barrie and May Burch Award in Geology  
 Brandon College Class of '55 Award  
 Breneman Family Scholarship/Bursary  
 The Community Health and Communitas  
 Scholarship/Bursary  
 Corbett Cibinel Architects Bursary  
 The David and Lorraine Norris  
 Memorial Bursary  
 Donald Burns and Louise Berlin Family  
 Awards in the Geosciences  
 The Dr. James & Mrs. Lucille Brown  
 Bursary in Music  
 Fotina Pappas Memorial Award  
 Jones Scholarship in Music History  
 and Literature  
 Lyall and Evelyn Robinson (Syncoptors)  
 Scholarship in Music  
 The Manitoba Chamber Orchestra  
 Music Scholarship  
 Manitoba Rural Initiatives Endowment  
 R & V McDonald Athletic Endowment  
 The Richard and Verda McDonald MVP  
 Awards in Men's & Ladies' Basketball  
 The Richard and Verda McDonald  
 Bursaries in Men's & Ladies' Volleyball

# Endowments at Brandon University

A wonderful way to support Brandon University in perpetuity, endowed gifts may be made in the form of cash or any other donation that can earn income. Typically, this would include such things as securities, insurance and/or property. Past donors have directed the income from their endowments to provide support for research, departmental requirements, maintenance or replacement of equipment, library acquisitions, lectureships and student-related programs such as scholarships and bursaries.

## Donald Burns and Louise Berlin Awards

In July, the Faculty of Science received a very generous donation of \$100,000 from the Donald Burns and Louise Berlin Family (formerly of Rideau Petroleums Ltd.) and Tundra Oil & Gas Ltd. (Roland Moberg, President) in support of attracting students to the Geology program at BU. This donation was matched to \$200,000 by the Manitoba Scholarships and Bursaries Initiative (MSBI).

These highly sought after scholarships and bursaries will enable the BU Geology Department to set up five new \$2,000 entrance scholarships/bursaries, targeting southwestern Manitoba high school students who are entering into Geosciences at BU. The Donald

Burns and Louise Berlin Family Scholarships/Bursaries in the Geosciences will play an important role in educating the next generation of Geoscientists in Manitoba, which is one of the hottest fields for employment in today's job market.

"This generous donation by Donald Burns, Louise Berlin and Tundra Oil & Gas Ltd. will encourage high school students to pursue an exciting, challenging and lucrative Geosciences career path, and will strengthen our geology program at BU by attracting and retaining the best and brightest students from southwestern Manitoba," says Dr. Simon Pattison, a professor in the Geology department. "On behalf of

the faculty and students in the BU Geology program, I thank Donald, Louise and Roland for these scholarships and bursaries!"

The Donald Burns and Louise Berlin Family Scholarships in the Geosciences will be awarded based on academic performance, to three students from southwestern Manitoba. Successful applicants will receive \$750 upon acceptance to Brandon University and registration in required courses. They will receive an additional \$1,250 upon successful completion of their first year and registration in at least nine credit hours of Geology as a Geosciences Major in year two of the program.

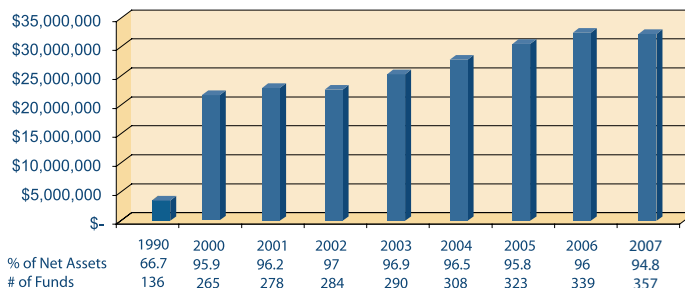
### The Manitoba Scholarships and Bursaries Initiative

In 2007, the Province of Manitoba continued the Manitoba Scholarships and Bursaries Initiative (MSBI), which matched dollar-for-dollar any donations to Brandon University designated toward new bursaries or scholarships. Once again, the program helped to create many new endowments, which provide awards to BU students in perpetuity. Brandon University is indebted to these contributors, whose generosity recognizes the work of our brightest scholars and helps students in need. We express our gratitude to the Province of Manitoba for their continued support of this important program.



▲ Deserving geology students will benefit immensely from the Donald Burns and Louise Berlin Family Scholarships and Bursaries.

### Growth of Endowments Since 1990



## Brandon University Department of Institutional Advancement

The Department of Institutional Advancement serves Brandon University, the Brandon University Alumni Association and the Brandon University Foundation in the pursuit of their respective missions. The Advancement Office acts as liaison between the Institution and alumni, donors, volunteers and community partners to promote the advancement of Brandon University.

### Institutional Advancement Staff

**Mrs. Carla Eisler**  
Alumni Relations Officer

**Mrs. Shawna English**  
Development Officer

**Ms Chloe Plamondon**  
Student Research Assistant

**Ms Christine Szabo**  
Financial and Administration Clerk

**Ms Lisa Thomson**  
Campaign Assistant

**Ms Chantelle Winter**  
Student Research Assistant

**Ms Cindy Yacyshen**  
Acting Director and Senior  
Development Officer



**BRANDON  
UNIVERSITY**

*Founded 1899*

**Brandon University Foundation**  
270 – 18th Street • Brandon, MB • R7A 6A9

**Phone: 204.727.7374**

**Toll Free: 1.877.282.4483**

**Fax: 204.727.4674**

**foundation@brandonu.ca**  
**development@brandonu.ca**  
**alumni@brandonu.ca**

**www.brandonu.ca**