

SAMPLE MUSIC THEORY ASSESSMENT

Instructions

- a) You have one hour to complete this test.
- b) Please write neatly, in pencil.
- c) You may use blank staff paper to think through your answers.
- d) The test is in five sections. Each section is marked out of 20 points. You must achieve a mark of 15 out of 20 in each of sections A, B and C, and 10 out of 20 in each of sections D and E in order to be excused from 64/67:110 – Materials of Music.
- e) Please use the abbreviations found in the key on page 8 of the exam.

SCORING

Question	Score	Out of	Total	To Pass
SECTION A - INTERVALS				
1		/5		15
2		/5		
3		/10		
SECTION B – CHORDS				
1		/5		15
2		/5		
3		/5		
4		/5		
SECTION C – SCALES				
1		/15		15
2		/5		
SECTION D – RHYTHM AND METER				
1		/8		10
2		/4		
3		/8		
SECTION E – KEY AND ANALYSIS				
1		/5		10
2		/5		
3		/10		

SECTION A – INTERVALS (20 points, 15 points to pass)

Question 1 – Naming Intervals (5 points) Name the intervals on the staff below. Include the size (unison, 2nd, 3rd, 4th, 5th, 6th, 7th, 8^{ve}) and the quality (major, minor, perfect, augmented, diminished) of each interval.

a) b) c) d) e) f) g) h) i) j)

+6 D5 -3 P5 -6 +3 A2 +7 P4 -2

Question 2 – Interval Inversion (5 points) Check your answers to Question 1 by inverting the intervals. Rewrite the new (inverted) interval on the staff provided, and name the resulting interval.

a) b) c) d) e) f) g) h) i) j)

-3 A4 +6 P4 +3 -6 D7 -2 P5 +7

Question 3 – Writing Intervals (10 points) For each given pitch on the staff below, add the pitch that will create the requested interval, making sure to include appropriate accidentals.

-3 P5 +6 A2 -6 +3 P4 -7 +2 P8
 above below below above above above above above below below

SECTION B – CHORDS (20 points, 15 points to pass)

Question 1 – Naming Chords (5 points)

Identify the following chords, giving their root and quality (no inversions). Chords may be triads (major, minor, augmented or diminished), or dominant seventh chords.

G min. D Maj. B^bMaj. E⁷ C Aug B min. F Maj B dim. A Maj D min.

Question 2 – Chord Inversions (5 points) Rewrite each of the chords below so that they are in the requested inversion, in close position.

Sample:

root
position

2nd inv.

root pos.

1st inv.

1st inv.

2nd inv.

Question 3 – Altering Chords (5 points) For each chord below, identify its quality (and root if you wish), then add an accidental to one note (just one!) to alter the chord to the new quality requested. You may add sharps, flats, double sharps, or double flats.

Sample:

C maj. minor

Minor diminished

Major minor

Aug major

Minor major

Major minor

Question 4 – Writing Chords (5 points) Write the requested chord in the correct inversion, in whole notes, using accidentals.

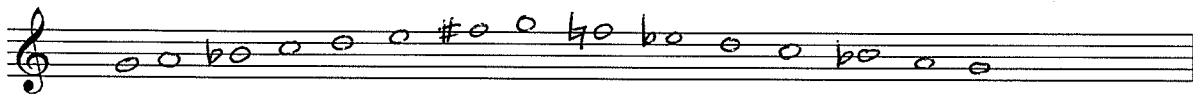
- a) F major, 1st inversion
- b) C-sharp minor, root position
- c) G minor, 2nd inversion
- d) B diminished, 1st inversion
- e) A-flat major, 2nd inversion

SECTION C – SCALES AND KEY SIGNATURES (20 points, 15 points to pass)

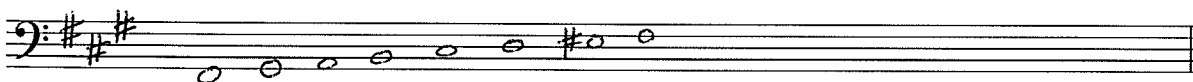
Question 1 – Writing Scales (15 points) Write the following scales ascending only (unless otherwise indicated) in whole notes in the given staff using key signatures or accidentals as requested.

A-flat major using a key signature

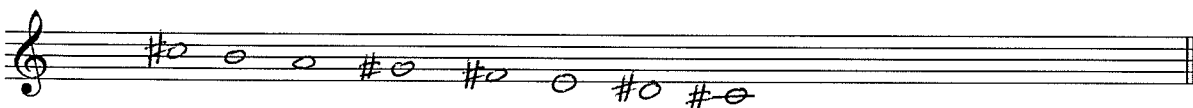
G melodic minor using accidentals, ascending and descending



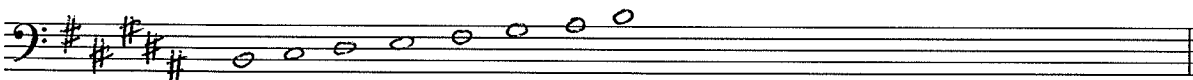
F-sharp harmonic minor using a key signature



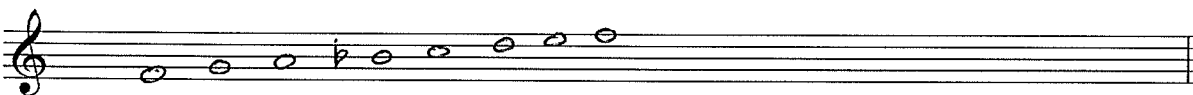
The relative natural minor of E major using accidentals, descending



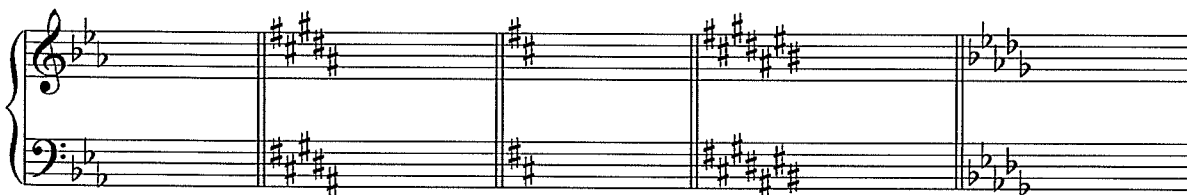
The parallel (or tonic) scale of B minor using a key signature



The relative of D minor, using accidentals



Question 2 – Key Signatures (5 points) Identify the major and minor key for each of the following key signatures.



Major E^b B D C# D^b

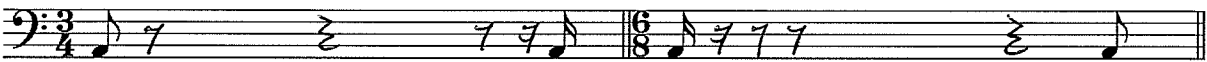
Minor C G# B A# B^b

SECTION D – RHYTHM AND METER (20 points, 15 points to pass)

Question 1 – Time Signatures (8 points) Identify the time signatures of following excerpts. Each excerpt is 2 measures.



Question 2 – Rests (4 points) Add rests to complete each measure according to the given time signatures.



Question 3 – Note Grouping (8 points) Rewrite the following notes grouping them according to the given time signature and adding any necessary bar lines. You may change the note value to reflect the grouping but not the duration. For example, a dotted half note may be separated into a quarter note tied to an eighth note.

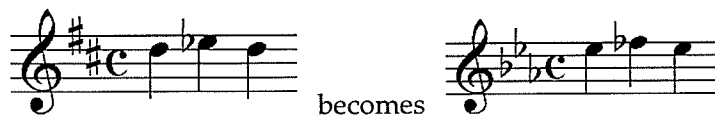


SECTION E – KEY AND ANALYSIS (20 points, 15 points to pass)

Question 1 – Transposition (5 points) For each melody below, identify the key (both are major keys). Then, transpose the melody into the new key, using the appropriate key signature and accidentals.

Sample:

D major E^b major




Key: B^b major




F major



Key: E Major



D^b major



Question 2 – Keys and Chords (5 points) For each chord below, indicate at least one key in which it may be found – other than its tonic key – as well as its function in that key (use Roman numerals).

Sample:

B minor: iii of G major

- 1) F minor: ii of E^b major
- 2) C major: IV of G major
- 3) A-flat major: V of D^b minor
- 4) C-sharp minor: vi of E major
- 5) B minor: iv of F[#] minor

Question 3 – Harmonic Analysis (10 points) For each excerpt below:

1. Identify the key (major or minor)
2. Identify each instance of the requested chords, using Roman numerals below the appropriate chords

Sample:

Tonic (I) and Subdominant (IV)

A piano excerpt in D minor, 2/4 time. The melody starts on D4, moves to E4, then F4, and ends on G4. The bass line starts on D3, moves to E3, then F3, and ends on G3. The chords are: I (D minor), I (D minor), IV (F major), IV (F major).

Key: D minor

Tonic (I) and Supertonic (ii)

A piano excerpt in E-flat major, 2/4 time. The melody starts on E4, moves to F4, then G4, and ends on A4. The bass line starts on E3, moves to F3, then G3, and ends on A3. The chords are: I (E-flat major), ii (F minor), I (E-flat major), ii (F minor).

Key: E^b Major

Subdominant (IV) and Dominant (V)

A piano excerpt in B major, 4/4 time. The melody starts on B4, moves to C#5, then D5, and ends on E5. The bass line starts on B3, moves to C#4, then D4, and ends on E4. The chords are: IV (D major), V (E major), IV (D major), IV (D major), V (E major).

Key: B Major

Abbreviations:

Intervals

P = Perfect
+ = Major
- = Minor
A = Augmented
D = Diminished

Chords

Maj. = Major
Min. = Minor
Dim. = Diminished
Aug. = Augmented
V₇ = Dominant seventh

