

MUSIC THEORY ASSESSMENT – SAMPLE ASSESSMENT

Instructions

- a) You have one hour to complete this test.
- b) Please write neatly, in pencil.
- c) You may use the blank staff paper provided to think through your answers.
- d) The test is in four sections. You must achieve required points to pass in each section to be excused from 64/67:110 Materials of Music.
- e) Please use the abbreviations provided.

SECTION A – INTERVALS (15 points, 10.5 points to pass)

**Question 1 – Naming Intervals (5 points)** Name the intervals on the staff below. Include the size (unison, 2<sup>nd</sup>, 3<sup>rd</sup>, 4<sup>th</sup>, 5<sup>th</sup>, 6<sup>th</sup>, 7<sup>th</sup>, 8<sup>ve</sup>) and the quality (major, minor, perfect, augmented, diminished) of each interval using the following abbreviations: maj, min, per, aug, dim.

a)                      b)                      c)                      d)                      e)

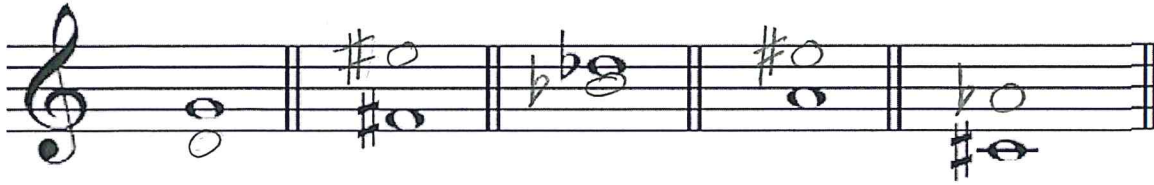
min 3      dim 4      maj 2      aug 6      per 5

**Question 2 – Interval Inversion (5 points)** Check your answers to Question 1 by inverting the intervals. Rewrite the new (inverted) interval on the staff provided and name the resulting interval.

a)                      b)                      c)                      d)                      e)

maj 6      aug 5      min 7      dim 3      per 4

**Question 3 – Writing Intervals (5 points)** For each given pitch on the staff below, add the pitch that will create the requested interval; include appropriate accidentals.



per 4  
below

maj 7  
above

min 3  
below

aug 5  
above

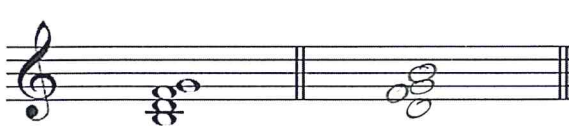
dim 6  
above

**SECTION B – CHORDS (20 points, 15 points to pass)**

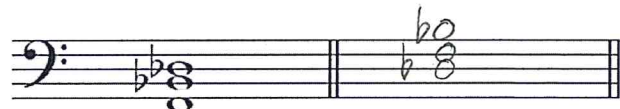
**Question 1 – Naming Chords and Inversions (10 points)** Identify the following chords, giving their root and quality, then rewrite them in the requested inversion. Chords may be triads (major, minor, augmented or diminished), or dominant seventh chords.



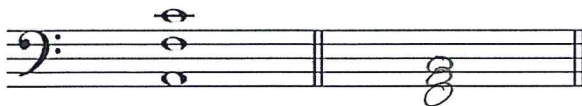
G minor Root pos.



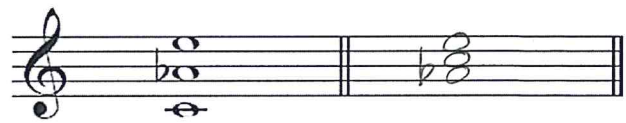
G dom 7 2nd inv.



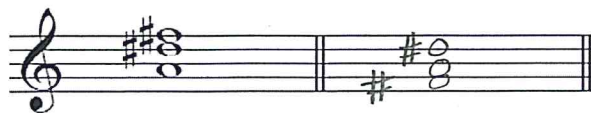
B<sup>b</sup> minor 1st inv.



F major Root pos.

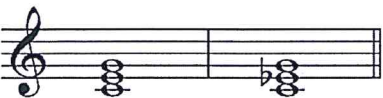


A<sup>b</sup> augmented Root pos.

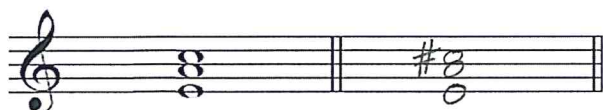


D# diminished 1st inv.

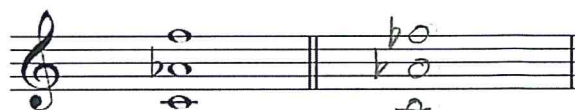
**Question 2 – Altering Chords (5 points)** For each chord below, identify its root and quality, then add an accidental to one note (just one!) to alter the chord to the new quality requested. You may add sharps, flats, double sharps, or double flats.

Sample: 

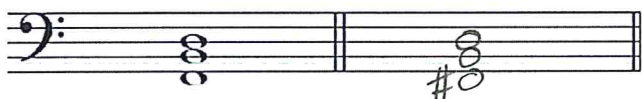
C major      minor



A minor      major



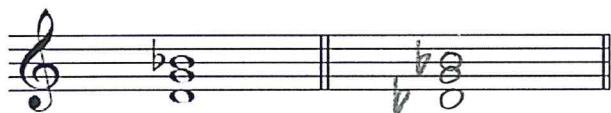
F minor      augmented



B diminished      minor



E major      diminished



G minor      diminished

**Question 3 – Writing Chords (5 points)** Write the requested chord in the correct inversion, in whole notes, using accidentals.

- D-flat augmented, 1<sup>st</sup> inversion
- B minor, root position
- C-sharp minor, 2<sup>nd</sup> inversion
- A diminished, 1<sup>st</sup> inversion
- E-flat major, 2<sup>nd</sup> inversion

a)

b)

c)

d)

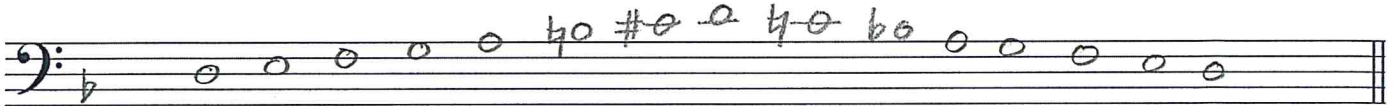
e)



SECTION C – SCALES, KEY SIGNATURES, AND TRANSPOSITION (20 points, 15 points to pass)

**Question 1 – Scale Writing (10 points)** Write the following scales ascending only (unless otherwise indicated) in whole notes in the given staff using key signatures or accidentals as requested.

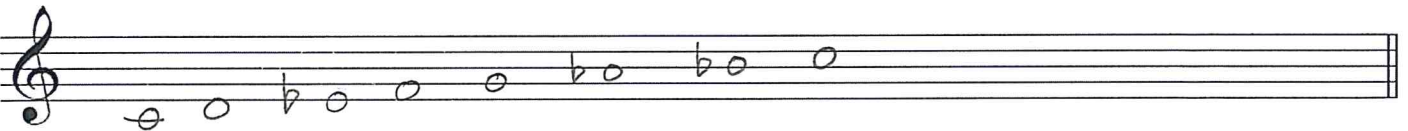
D melodic minor using a key signature ascending and descending



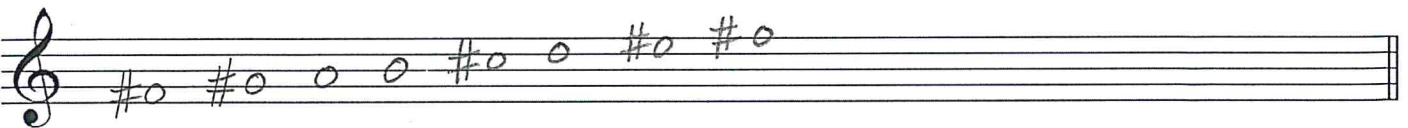
G-flat major using a key signature



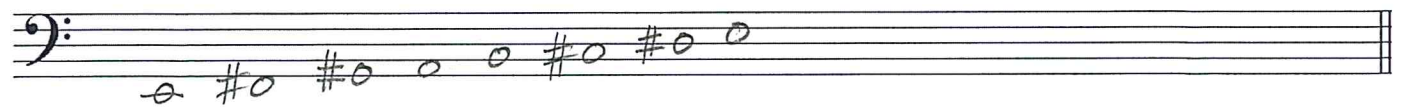
C natural minor using accidentals



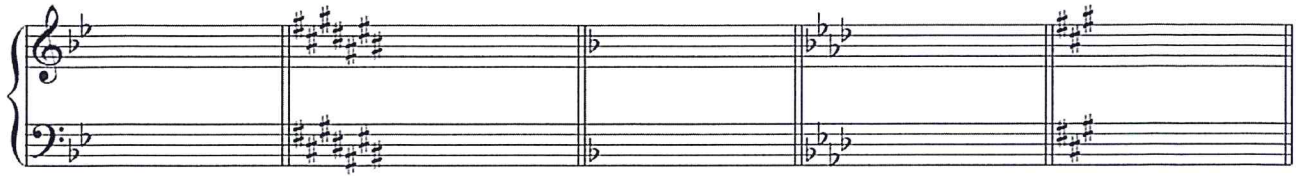
F-sharp harmonic minor using accidentals



The relative of C-sharp minor using accidentals



**Question 2 – Key Signatures (5 points)** Identify the major and minor key for each of the following key signatures.



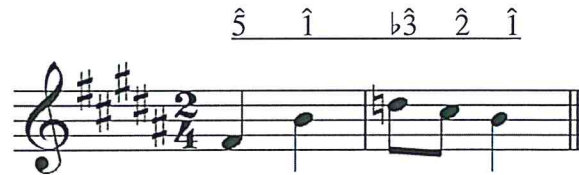
Major B<sup>b</sup>                      C<sup>#</sup>                      F                      A<sup>b</sup>                      A  
 Minor G                      A<sup>#</sup>                      D                      F                      F<sup>#</sup>

**Question 3 – Transposition (5 points)** For each melody below, identify the key (both are major keys) and write scale degrees above each note. Then, transpose the melody into the new key, using the appropriate key signature and accidentals.

Sample:



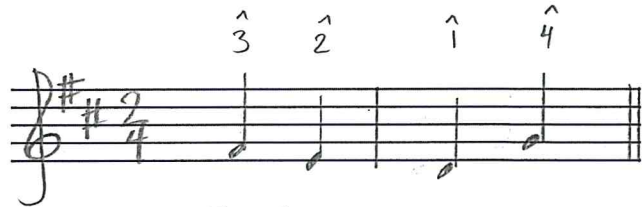
C major



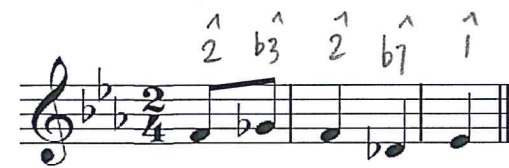
transpose to B major



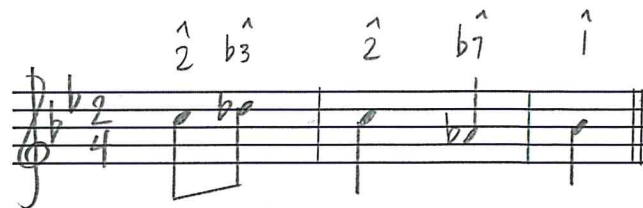
G major



transpose to D major



E<sup>b</sup> major



transpose to B-flat major

SECTION D – RHYTHM AND METER (20 points, 10 points to pass)

Question 1 – Time Signatures (8 points) Identify the time signatures of following excerpts. Each excerpt is 2 measures.



Question 2 – Rests (4 points) Add rests to complete each measure according to the given time signatures.



Question 3 – Note Grouping (8 points) Rewrite the following notes grouping them according to the given time signature and adding any necessary bar lines. You may change the note value to reflect the grouping but not the duration. For example, a dotted half note may be separated into a quarter note tied to an eighth note.

