

CED Choice Matrix: A Path Finding Tool

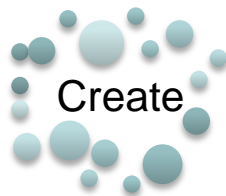
Wayne Kelly & Gary McNeely
Rural Development Institute
Brandon University



Manitoba Planners Conference
February 2012
Brandon, MB



Project Overview



Research



Prototype
& Learn

We are
here



Sustain
& Evolve

The research team defined a
CED Tool as:

*Any guide, worksheet, checklist, manual,
"how-to" or process in text, audio or
video formats that is focused on guiding
the user through a CED activity*

Judy Coleman
VP Programs and
Services, North
Eastman
Health
Association

"I like the
idea of
having any
resource that
will make our
work efficient
and effective"

WHAT WE HAVE DONE SO FAR, BY THE NUMBERS:

- 1) 1000+ CED tools inventoried
- 2) 125 CED tools catalogued in the Choice Matrix
- 3) 5 communities (21 participants) participated in the RESEARCH stage
- 4) 71 CED projects inventoried by communities
- 5) 5 CED projects 'designed' with communities
- 6) 84 CED Tools suggested by communities
- 7) 50 CED websites regularly used by participants
- 8) 50 CED Tool reviews will be collected from Manitoba's Economic Development Officers



**BRANDON
UNIVERSITY**
Founded 1899



**RURAL
DEVELOPMENT
INSTITUTE**

THE CHOICE MATRIX

PEOPLE

GREEN

GROW

SEARCH

PHASES



People



Green



Grow



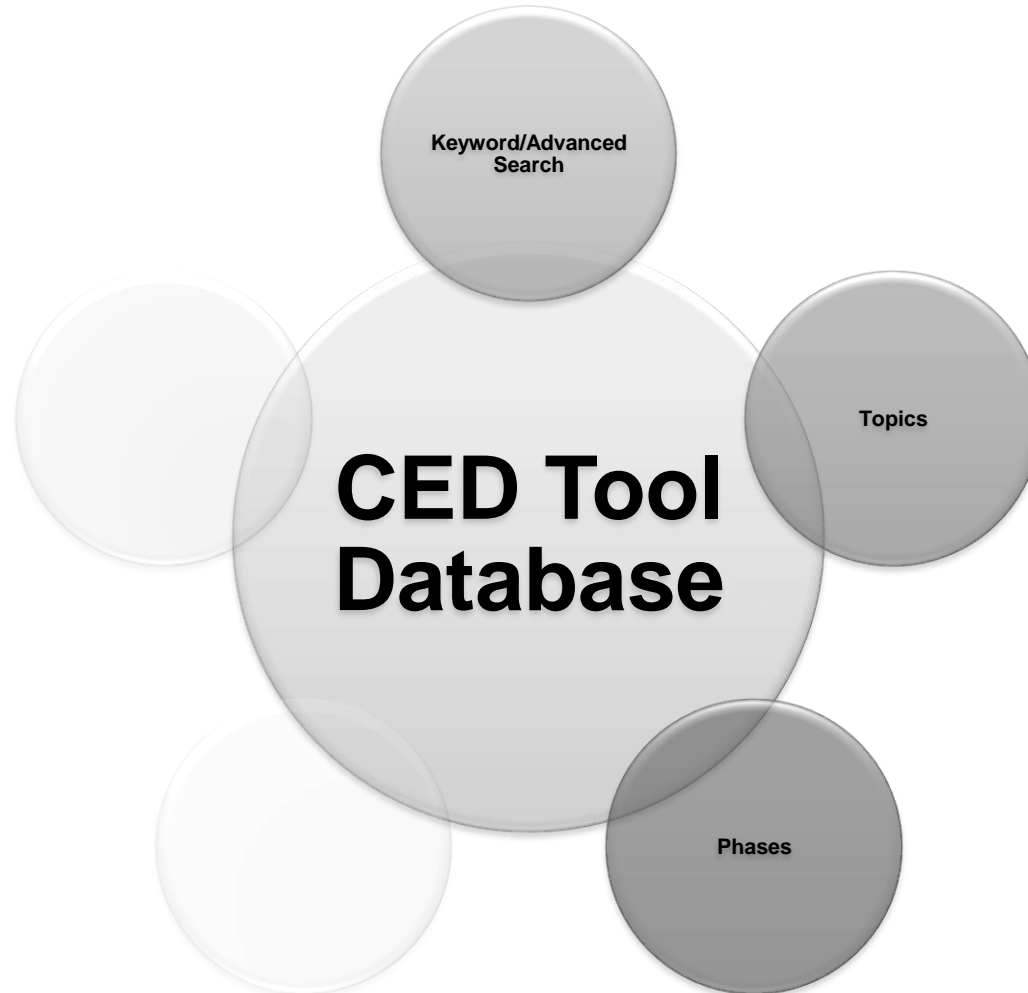
Search



Phases

© Rural Development Institute 2011 - Developed by Beyond The Cube

Beta Site Navigation Paths

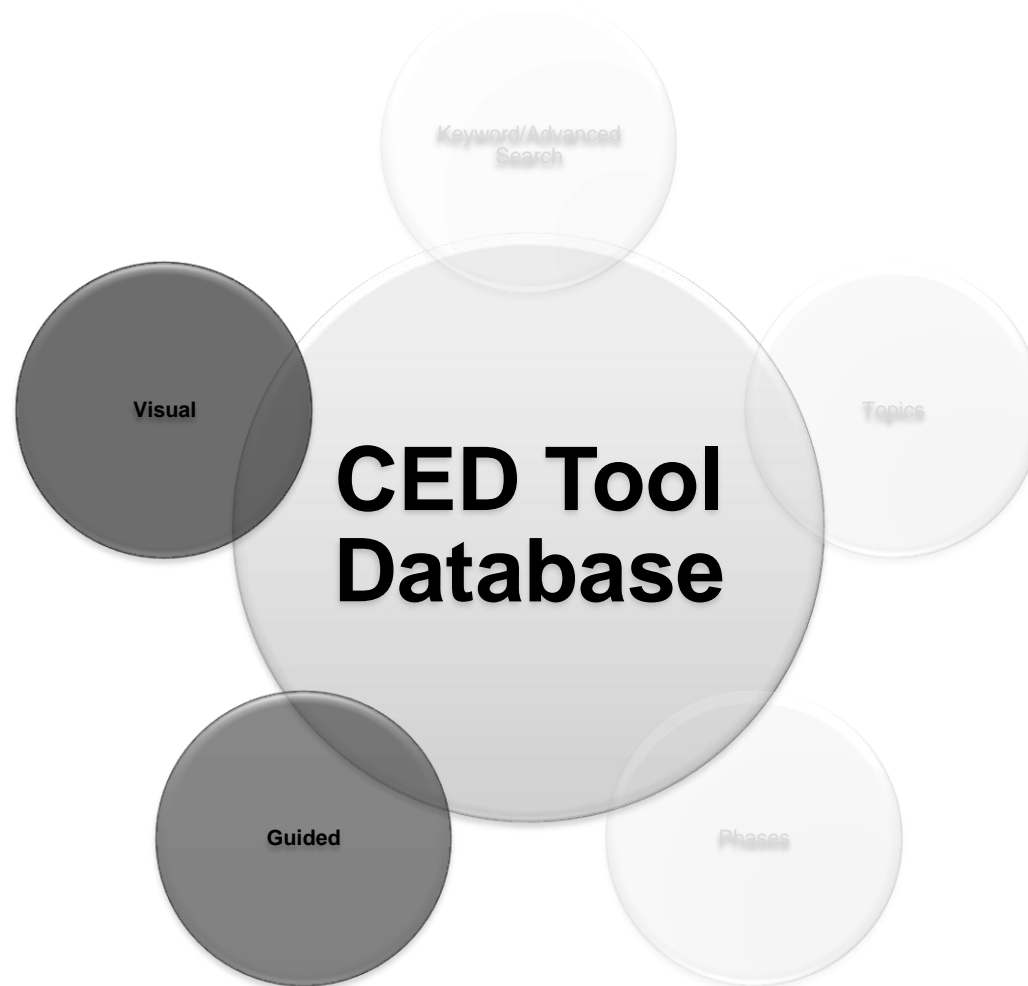


**BRANDON
UNIVERSITY**
Founded 1899



**RURAL
DEVELOPMENT
INSTITUTE**

Future Navigation Paths – To be developed



Search Path



BRANDON
UNIVERSITY
Founded 1899



RURAL
DEVELOPMENT
INSTITUTE

THE CHOICE MATRIX

PEOPLE GREEN GROW SEARCH PHASES

Search Find the tool you are looking for

Basic Search Advanced Search

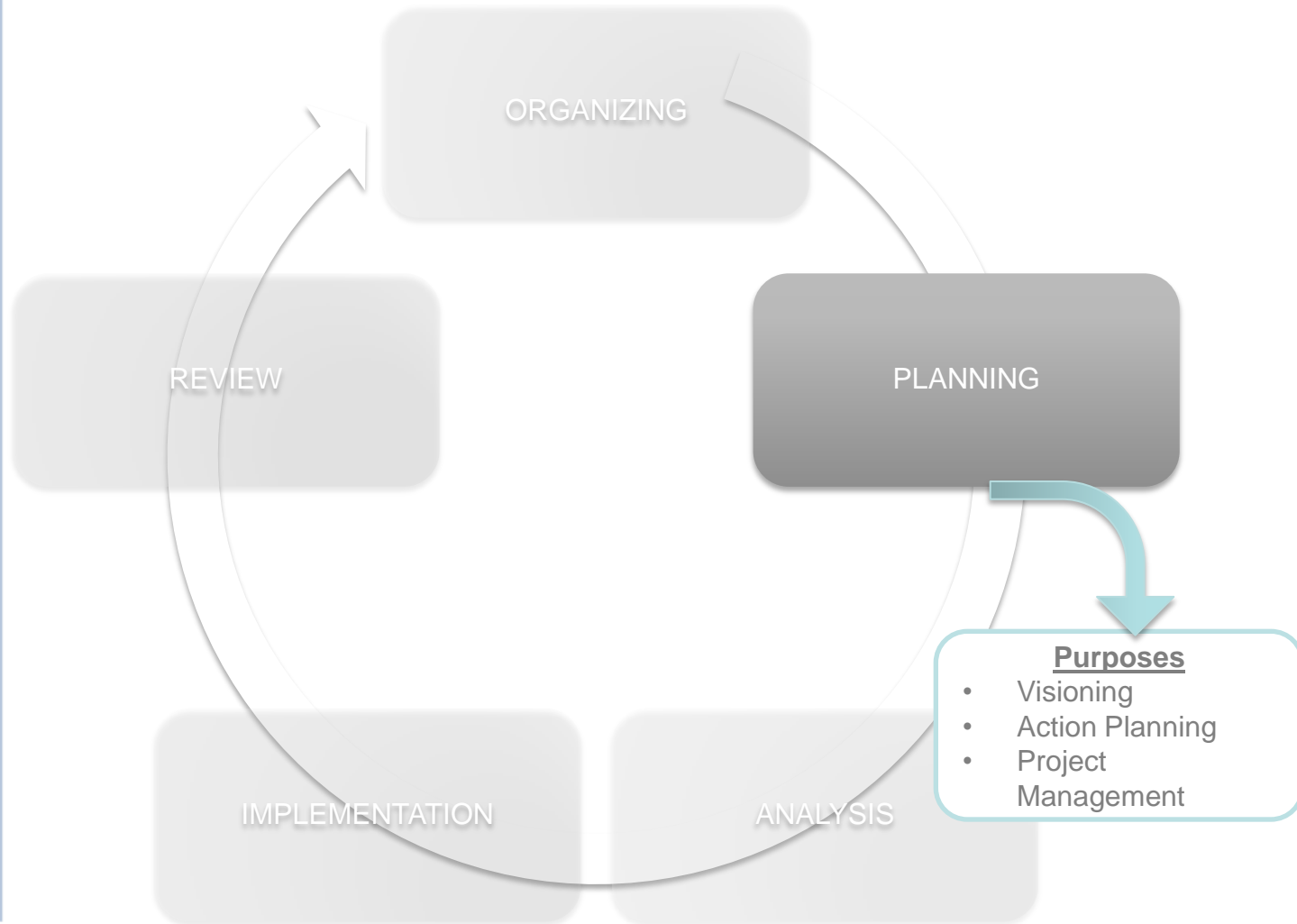
Keywords	with all of the words	<input type="text"/>
Author	Return tools written by	<input type="text"/>
Language	Return tools written in this language	Please select the language in v
Rating	Tools with at least this rating	Please select the rating to sea
Date created	Return tools published between	<input type="text"/> - <input type="text"/> e.g. 1996

Search

Phases



Phases > Purposes



**BRANDON
UNIVERSITY**
Founded 1899



**RURAL
DEVELOPMENT
INSTITUTE**



**BRANDON
UNIVERSITY**
Founded 1899



**RURAL
DEVELOPMENT
INSTITUTE**

THE CHOICE MATRIX

PEOPLE

GREEN

GROW

SEARCH

PHASES

Phases Identify tools using CED phases

Step 1 Select a phase

Organizing (79)

Planning (48)

Analyzing (49)

Implementing (22)

Reviewing (13)

Step 2 Select a purpose

Visioning (15)

Action Planning (27)

Project Management (6)

Displaying all 15 tools

[Back casting](#)



This toolkit has been developed to assist communities in the planning, implementation and evaluation of community engagement activities and has been developed with the assistance and permission of the Coastal Co-Operative research centre. Chapters include subjects that range from how to find the right tool to the Delphi study to stakeholder analysis. Their are various appendices and websites listed .



[Brainstorming](#)



This toolkit has been developed to assist communities in the planning, implementation and evaluation of community engagement activities and has been developed with the assistance and permission of the Coastal Co-Operative research centre. Chapters include subjects that range from how to find the right tool to the Delphi study to stakeholder analysis. Their are various appendices and websites listed .



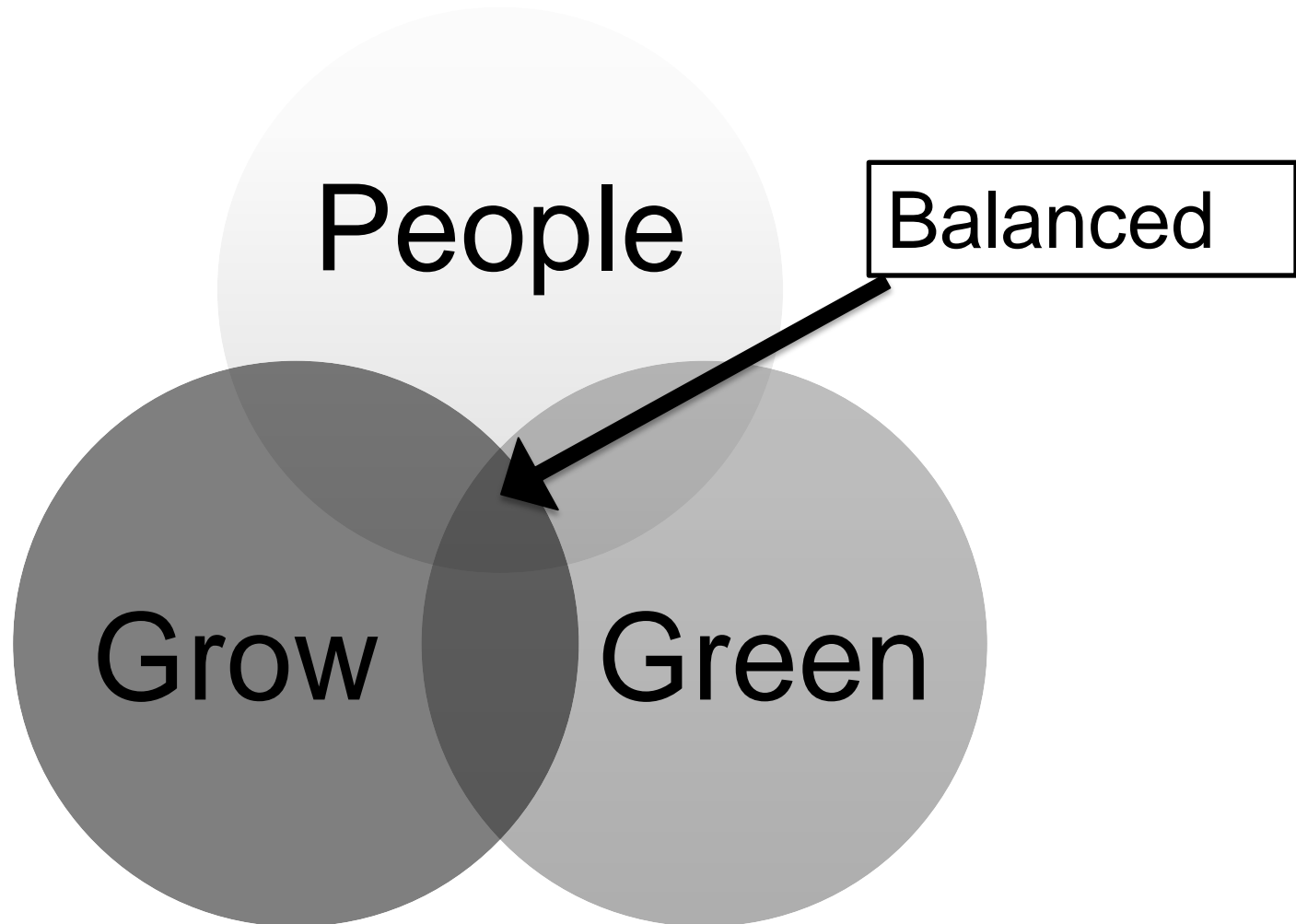
[Design Charrettes](#)



This toolkit has been developed to assist communities in the planning, implementation and evaluation of community engagement activities and has been developed with the assistance and permission of the Coastal Co-Operative research centre. Chapters include subjects that range from



Topics – Sustainability Framework



**BRANDON
UNIVERSITY**
Founded 1899



**RURAL
DEVELOPMENT
INSTITUTE**



**BRANDON
UNIVERSITY**
Founded 1899



**RURAL
DEVELOPMENT
INSTITUTE**

Balanced

THE CHOICE MATRIX

PEOPLE

GREEN

GROW

SEARCH

PHASES

ADMIN

Grow View grow tools



Displaying tools 1 - 20 of 56 in total

★★★★★
(3.0/1)



[Action Planning Frameworks](#)

Action planning frameworks and worksheets describe in detail the actions to be undertaken as components of the chosen strategy options. They provide a logical and clear layout for understanding each action: who will do it when and why.



[Assessing and Developing Tourism Resources](#)

"The purpose of this module is to guide a committee of individuals through the process of community tourism development in an organized and informed manner."



[Building the Base](#)

A) Ensure your key decision makers are adequately informed about the challenges, steps, and resources involved. B) establish criteria for your working group to screen the enterprise opportunity ideas that are generated. C) Choose the best 3-6 opportunities for pre-feasibility study. D) apply what you've learned to do a "second cut" for those opportunities in which to invest more detailed feasibility research



[Business and Community Survey](#)

A survey should be developed according to the context in which it is being implemented. While one can solicit a great deal of information, the collected information is worthless unless it is analysed and used. It is best to solicit responses that can be entered into a database (e.g., ACCESS software) easily. To maximise the versatility of the information collected, the opportunities and constraints of such data management systems in terms of data organisation, standardisation, and analysis, should be understood when designing and implementing any survey.



Tool Display



**BRANDON
UNIVERSITY**
Founded 1899




**RURAL
DEVELOPMENT
INSTITUTE**

Action Planning Frameworks



Description

Action planning frameworks and worksheets describe in detail the actions to be undertaken as components of the chosen strategy options. They provide a logical and clear layout for understanding each action: who will do it when and why.

When	Why	Tool Details	
Analyzing	Assessment	Equipment / Facilities Needed	
	Comprehensive Analysis	Expertise Needed	Not Specified
Implementing	Community Infrastructure	Language	English Only
	Cultural and Arts	Authors	William Trousdale
	Financial	Editors	
	Governance	This tool was made in	Kenya
	Human Resources	Publisher	United Nations Human Settlement Program (UN-HABITAT)
	Natural Resources		
	Social Capital	Date Created	January 2005
Organizing	Engagement	File Size	
	Fundraising	File Format	
	Partnership Building	Source Document Title	Promoting Local Economic Development through strategic planning: Local Economic Development (LED) series
	Project Team Building		
Planning	Action Planning	Source Document URL	http://www.unhabitat.org/pmss/getElectronicVersion.asp?nr=2320&alt=1
	Project Management 		
	Visioning		
Reviewing	Community Feedback		
	Process Evaluation		
	Project Evaluation		
Topic	Grow		
Who			

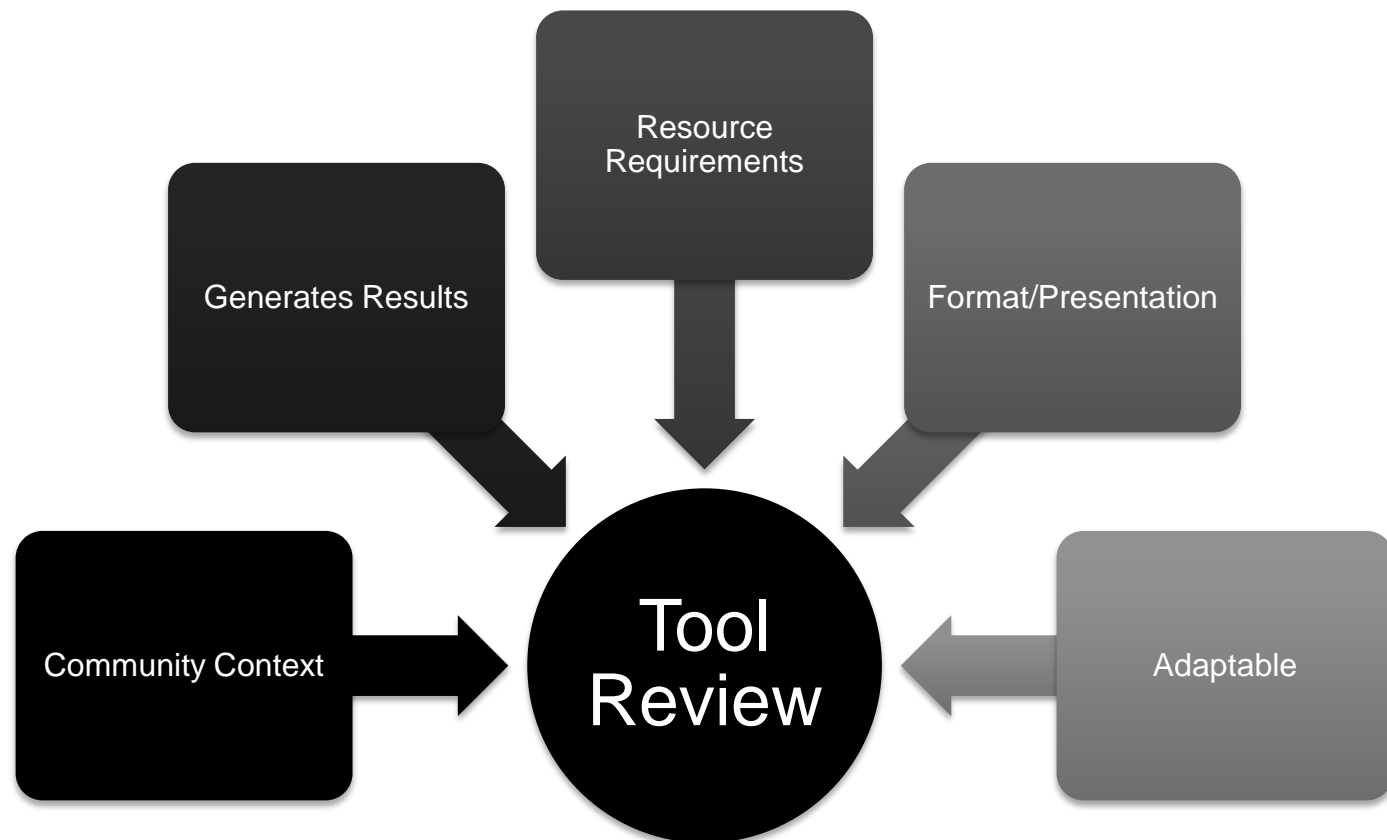
Reviews

Activity 1 – Reflections on the site



- How often do you search for new tools?
- When do you look for new tools?
- How long does it take to complete these searches?
- Would this site help with your tool searches?
- Do you value the input of planners to assist in your tool selections?

Tool Reviews





**BRANDON
UNIVERSITY**
Founded 1899



**RURAL
DEVELOPMENT
INSTITUTE**

THE CHOICE MATRIX

PEOPLE

GREEN

GROW

SEARCH

PHASES

ADMIN

CED Review Action Planning Frameworks ★★★★★ (3)



Review by Anonymous on Tuesday, February 21, 2012 at 9:40AM

What is your experience with this tool?

tried

1. Community Context:

Low
The tool had test test test test test

2. Generates Results

Not Stated
The tool had test test test test test

3. Resources Identified

High
The tool had test test test test test

4. Format/Presentation

Low
The tool had test test test test test

5. Adaptable

High
The tool had test test test test test

6. Overall Comments

OVERALL TEST TEST The tool had test test test test test

Contributing to the site



CED Tool Review Form

You are about to review Action Planning Frameworks

What is your experience with this tool?

- ☐ Never used it
- ☐ I've tried to use it
- ☐ Used it once or twice
- ☐ Use it regularly

1. Community Context:

<input type="radio"/> High	<input type="radio"/> Low	<input type="radio"/> Not Stated
<ul style="list-style-type: none">Local/regional conditions to generate results from tool are clearly stated.Target users are identified.Underlying assumptions or conditions when and where the tool works are clearly presented.	<ul style="list-style-type: none">Local/regional conditions are vague or generalized.Target users are not clearly defined.Assumptions or conditions where or when to use the tool are vague.	<ul style="list-style-type: none">Community conditions are not presented.Target users are not identified.Conditions where or when to use the tool are not presented

Community Context Comments:

2. Generates Results

<input type="radio"/> High	<input type="radio"/> Low	<input type="radio"/> Not Stated
<ul style="list-style-type: none">Goal/purpose of tool is clearly stated.Possible to implement by a	<ul style="list-style-type: none">Goal/purpose is unclear.Requires specialized knowledge or resources not readily	<ul style="list-style-type: none">Goal/purpose is not stated.Tasks are unclear.Examples are not given.



**BRANDON
UNIVERSITY**
Founded 1899

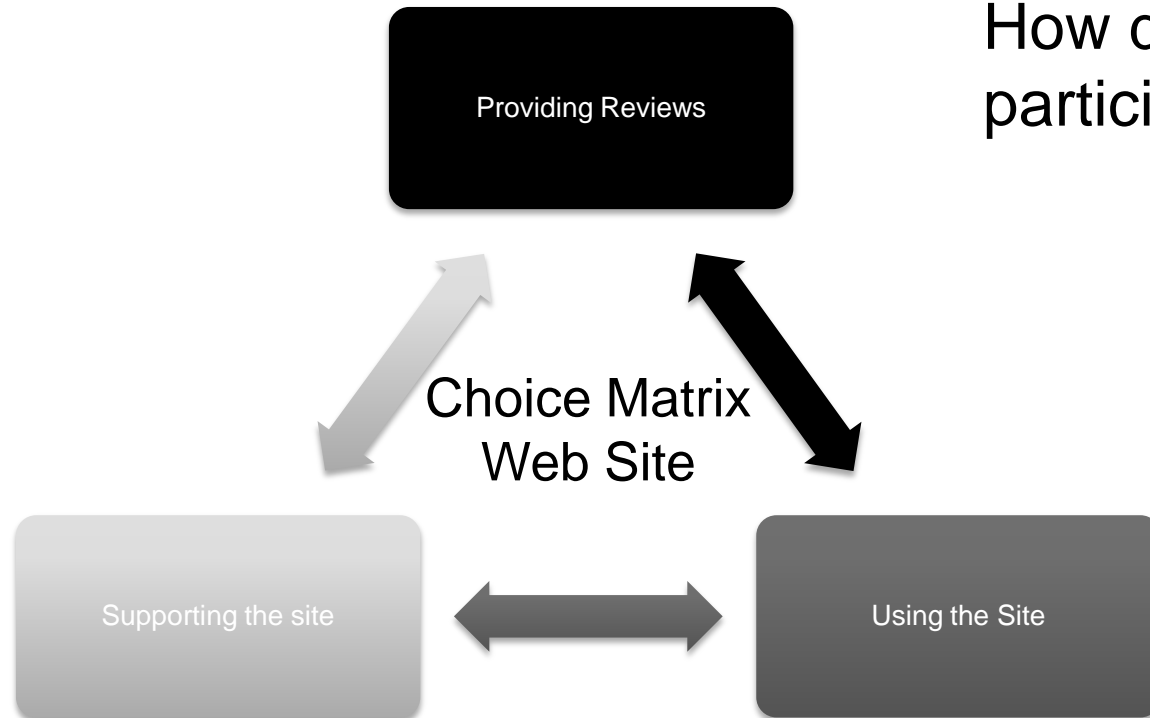


**RURAL
DEVELOPMENT
INSTITUTE**



- “Communication evolved into Interactive dialogue using technology” Wikipedia

How do you participate?





How do
you
participate
?



BRANDON
UNIVERSITY
Founded 1899



RURAL
DEVELOPMENT
INSTITUTE

Social Media Landscape



FredCavazza.net

Rural Development Institute & Social Media



facebook

Search


RURAL DEVELOPMENT INSTITUTE

 [Get Started](#)

 **Wall**

[Hidden Posts](#)

 [Info](#)

 [Friend Activity \(1\)](#)

 [Photos](#)

[EDIT](#)

About [Edit](#)

Brandon University's Rural Development Institute (RDI) is a centre for exce...

Rural Development Institute
Non-Profit Organization · [Edit Info](#)

Wall Rural Development Institute · **Everyone (Most Recent)** ▼

Share:  [Status](#)  [Photo](#)  [Link](#)  [Video](#)  [Question](#)

Write something...

 **Rural Development Institute**
Trying out the Hootsuite publisher. Maybe this will do what "Publicize" cannot.
 [Like](#) · [Comment](#) · [Share](#) · February 10 at 1:32pm via HootSuite

 **Rural Development Institute**
We had two great Social Media and Strategic Impact webinars yesterday! Thank you to all of the participants and to Mike and Joanna from CEPSP for presenting.
[Unlike](#) · [Comment](#) · [Share](#) · January 27 at 8:58am

 You and Elicia Funk like this.

Write a comment...

Rural Development Institute & Social Media



LinkedIn  Account Type: Basic


[Home](#) [Profile](#) [Contacts](#) [Groups](#) [Jobs](#) [Inbox](#) **2** [Companies](#) [News](#) [More](#)

Groups ▾


Your Groups (10) [Reorder »](#)

[+ Create a group](#)



 Canadian Rural Research Network (CRRN) / Réseau canadien de recherche rurale (RCRR)



 Devex - International Development



 International Comparative Rural Policy Studies Consortium



 International Development Studies



Rural Development Institute & Social Media



twitter



Brandon University

@BrandonUNews

The official Twitter source for Brandon University news and events.

Brandon, Manitoba, Canada · <http://www.brandonu.ca>

Followed by IISD WIC.

238

TWEETS

18

FOLLOWING

339

FOLLOWERS

Following



[View more Tweets →](#)



Brandon University @BrandonUNews

2h

#BrandonU Banishes the February Blues with WINTERLUDE
bit.ly/zA9KpM #BdnMB #Manitoba



Brandon University @BrandonUNews

4h

Opportunity for Community-at-large to Benefit from
Collaborations with BU bit.ly/ynA6ju #BrandonU



Brandon University @BrandonUNews

20 Feb

#BrandonU is hiring an Instructional Associate in their
Psychiatric Nursing program bit.ly/whzAUU #Winnipeg
#NurseJobs #RNjobs

Rural Development Institute & Social Media



**BRANDON
UNIVERSITY**
Founded 1899



**RURAL
DEVELOPMENT
INSTITUTE**

Community Development Research and Knowledge Sharing

I started writing this blog recently to help put my thoughts on paper. Working and researching in community development for the past 10 years has created a lot of insights and ideas as well as raising a lot of questions that need further exploring. This blog is focused on sharing research, ideas and perspectives on community and rural development based on experiences past and present, interests and pressing issues.

manage calendars

Hundreds of ways to use Google Apps for Business

Google Apps for Business

WEDNESDAY, 8 FEBRUARY 2012

Ingredients for e-ready communities

How do you describe the importance of the Internet? How about its potential for communities? That is a question I continue to try and answer after more than 10 years of working in Information and Communication Technology (ICT) and rural development. Studies are beginning to calculate its impact with some results indicating that the Internet is responsible for 21% of economic growth in developed nations. Additionally, a study from the World Bank determines that every 10% point increase in penetration of ICTs can impact economic growth by up to 1.4% for developing countries.

Unfortunately, in attempts to explain the Internet and its importance, it

BLOG ARCHIVE

▼ 2012 (4)

▼ February (1)

Ingredients for e-ready communities

► January (3)

► 2011 (5)

ABOUT ME



Wayne Kelly

[View my complete profile](#)

Choice Matrix = Social Media contribution



**BRANDON
UNIVERSITY**
Founded 1899



**RURAL
DEVELOPMENT
INSTITUTE**



Activity 2 – Who do you want to hear from?

Planning with confidence!



- Would using reviewed Planning tools have a positive impact on your collaborative work with other planners?
- Would you be willing to conduct reviews of planning and other tools to assist in the planning projects of your colleagues?
- What can RDI do to help you to conduct tool reviews?

Tool Reviewer Profile



By logging in to review a Community Development Tool, Tool Reviewers are giving their informed consent to provide their name, organization, and role / job title, and are also agreeing to have this information made public along with their review.

1. **Current Role / Job Title:**
2. **Name:**
3. **Organization:**
4. **Place of Work:** **City/Town** **State/Province** **Country**
5. **Contact Information:**
6. **Email**
7. **Address**
8. **Tool Reviewers have an option to provide additional information that will be made public along with their review, regarding:**
9. **Years of experience in Community Development:**
10. **Professional Training or Accreditation(s) in Community Development or other area:**
11. **Memberships in Community Development Organizations, Associations, and affiliated Networks (Provide names and years of memberships in each):**



**BRANDON
UNIVERSITY**
Founded 1899



**RURAL
DEVELOPMENT
INSTITUTE**

Thank you

<http://cm.beyondthecube.ca>

Wayne Kelly, Research Manager
Gary McNeely, Lead Researcher

Rural Development Institute
270-18th Street
Brandon, MB R7A 6A9
Ph: 204-571-8518
kellyw@brandonu.ca

