



# Rural Immigration: A Decade of Research



By

**Bill Ashton, PhD**

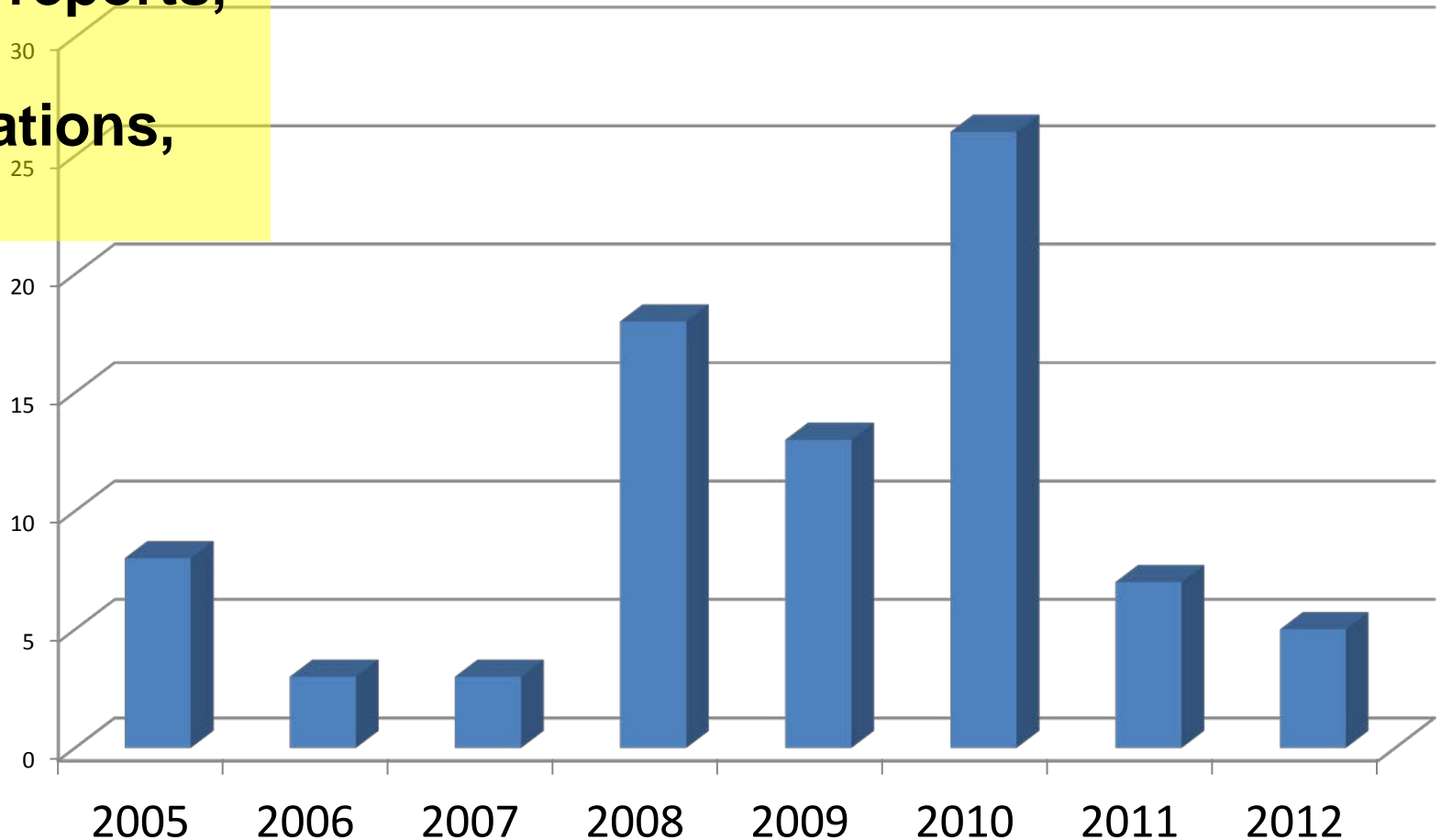
Director, Rural Development Institute,  
Brandon University

Presented at  
Leaders' Roundtable on Immigration  
Conference Board of Canada  
Winnipeg  
April 17, 2011



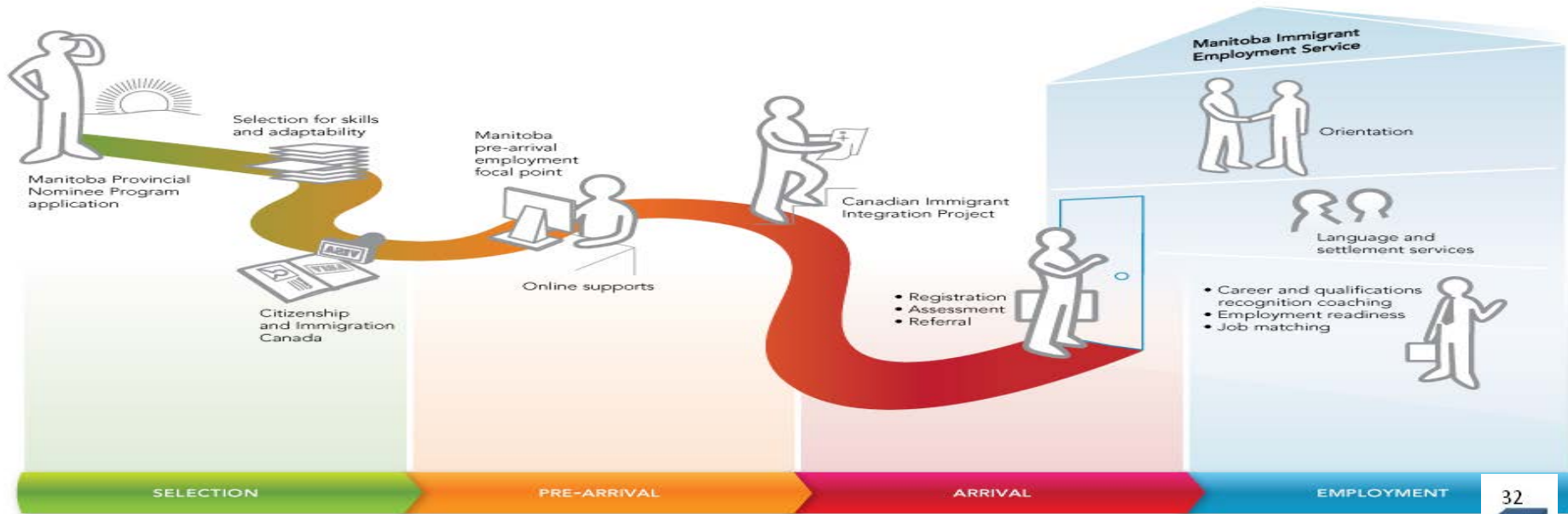
## Publications

6 dozen reports,  
articles,  
presentations,  
posters

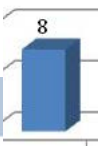


# By topics

## Manitoba Immigration Service Continuum



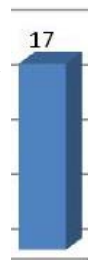
- History of immigration
- Francophone
- Northern



- Hiring considerations
- Regional approaches
- Population changes



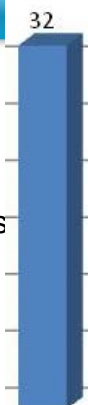
- Intercultural
- Housing
- Settlement
- Local capacity



- Labour issues
- Hiring TFW
- Employer direct stream
- Rapid growth



- Welcoming communities
- Retention
- Policy impacts
- Case studies



## Conference Board proposed research 2013

- Immigration advantage
- Credential recognition
- Entrepreneurs
- 2<sup>nd</sup> generation
- Remittance



## Rural matters

- Retention & Revitalization
- Business engagement & succession (P2P)
- Settlement services & govt coordination
- Living lab x 32
- Twinning & sharing

# Acknowledgements

- Brandon Welcoming Communities Dialogue Group
- Southwest Rural Immigration Committee
- Rural Employers
- Rural and Cooperative Secretariat, Agricultural and Agri-Food Canada
- Federal and Provincial government agencies, esp. MB IAM, MAFRI
- Local governments, agencies and organizations
- Metropolis, P2P, and WCICC



# Thank you

Comments  
Questions  
Discussion

